

	HC 260 XP	HC 275 XP
Power	1,2 HP - 0,9 kW	1,2 HP - 0,9 kW
Displacement	25,4 cm ³	25,4 cm ³
Weight	5,3 kg	5,5 kg
Blade type	double	double
Blade length	600 mm	750 mm
Blade pitch	35 mm	35 mm

HC 260 XP - HC 275 XP hedgetrimmers

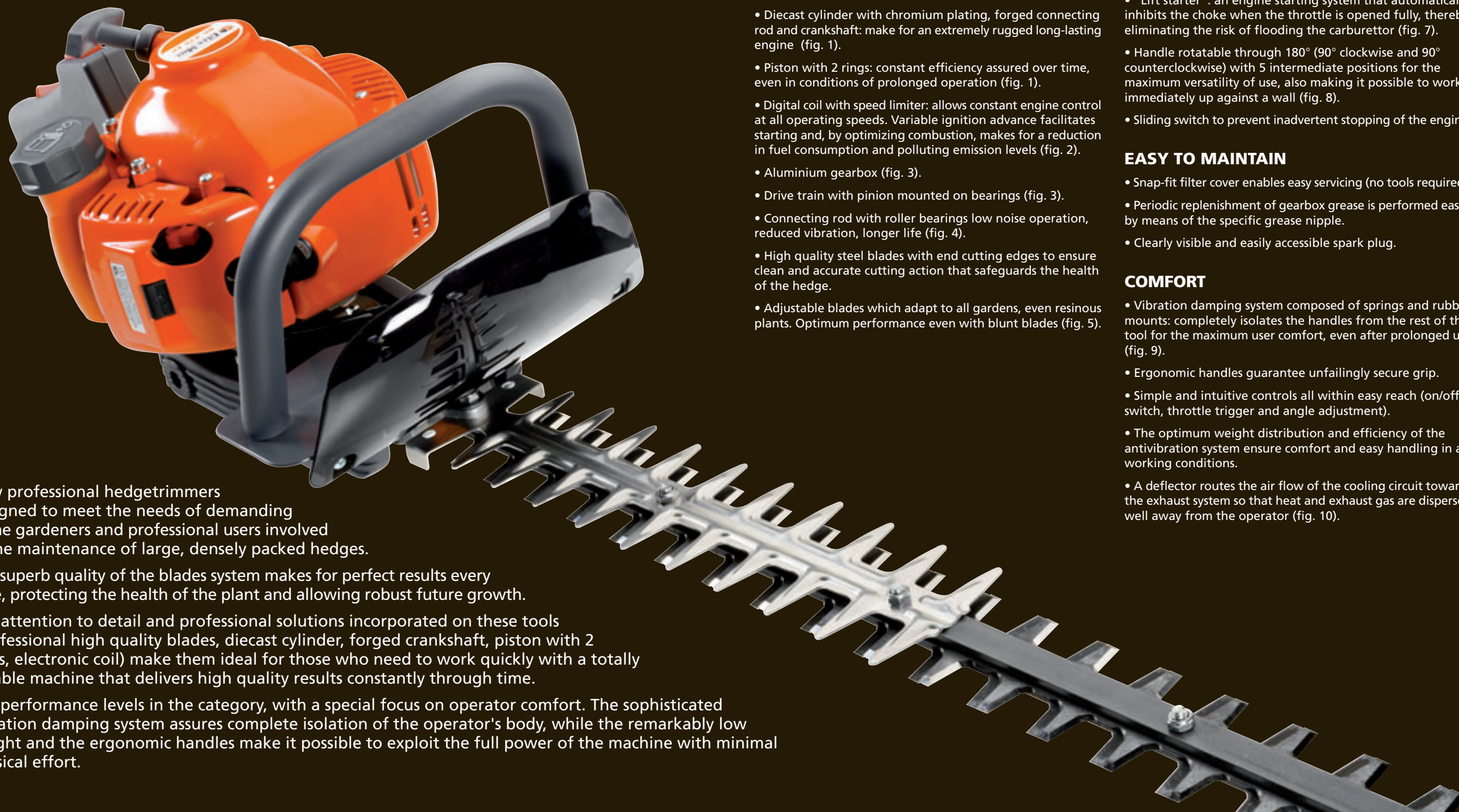


It's an **Emak S.p.A.** trademark - Member of the Yama Group
 42011 Bagnolo in Piano (RE) Italy - Tel. +39 0522 956611 - Fax +39 0522 951555
 info@emakgroup.com - www.emakgroup.com

001101414



HC 260 XP - HC 275 XP hedgetrimmers



New professional hedgetrimmers designed to meet the needs of demanding home gardeners and professional users involved in the maintenance of large, densely packed hedges.

The superb quality of the blades system makes for perfect results every time, protecting the health of the plant and allowing robust future growth.

The attention to detail and professional solutions incorporated on these tools (professional high quality blades, diecast cylinder, forged crankshaft, piston with 2 rings, electronic coil) make them ideal for those who need to work quickly with a totally reliable machine that delivers high quality results constantly through time.

Top performance levels in the category, with a special focus on operator comfort. The sophisticated vibration damping system assures complete isolation of the operator's body, while the remarkably low weight and the ergonomic handles make it possible to exploit the full power of the machine with minimal physical effort.

PERFORMANCE

- 25.4 cm³ 1.2 HP (0.9 kW) 2-stroke engine complying with Euro 1 standards, featuring generous torque output with a linear power curve even at low revs.
- Diecast cylinder with chromium plating, forged connecting rod and crankshaft: make for an extremely rugged long-lasting engine (fig. 1).
- Piston with 2 rings: constant efficiency assured over time, even in conditions of prolonged operation (fig. 1).
- Digital coil with speed limiter: allows constant engine control at all operating speeds. Variable ignition advance facilitates starting and, by optimizing combustion, makes for a reduction in fuel consumption and polluting emission levels (fig. 2).
- Aluminium gearbox (fig. 3).
- Drive train with pinion mounted on bearings (fig. 3).
- Connecting rod with roller bearings low noise operation, reduced vibration, longer life (fig. 4).
- High quality steel blades with end cutting edges to ensure clean and accurate cutting action that safeguards the health of the hedge.
- Adjustable blades which adapt to all gardens, even resinous plants. Optimum performance even with blunt blades (fig. 5).

EASY TO USE

- "Primer": fuel mixture is drawn actively into the carburettor to facilitate starting (fig. 6).
- "Lift starter": an engine starting system that automatically inhibits the choke when the throttle is opened fully, thereby eliminating the risk of flooding the carburettor (fig. 7).
- Handle rotatable through 180° (90° clockwise and 90° counterclockwise) with 5 intermediate positions for the maximum versatility of use, also making it possible to work immediately up against a wall (fig. 8).
- Sliding switch to prevent inadvertent stopping of the engine.

EASY TO MAINTAIN

- Snap-fit filter cover enables easy servicing (no tools required).
- Periodic replenishment of gearbox grease is performed easily by means of the specific grease nipple.
- Clearly visible and easily accessible spark plug.

COMFORT

- Vibration damping system composed of springs and rubber mounts: completely isolates the handles from the rest of the tool for the maximum user comfort, even after prolonged use (fig. 9).
- Ergonomic handles guarantee unfailingly secure grip.
- Simple and intuitive controls all within easy reach (on/off switch, throttle trigger and angle adjustment).
- The optimum weight distribution and efficiency of the antivibration system ensure comfort and easy handling in all working conditions.
- A deflector routes the air flow of the cooling circuit towards the exhaust system so that heat and exhaust gas are dispersed well away from the operator (fig. 10).

