

PERSONAL TRANSPORTATION VEHICLES



Shown with optional Yamaha Genuine Accessories.

Where permitted by closed-community regulations or other local ordinance, the Personal Transportation Vehicle (PTV) shown is suitable for use on private/public roads with a maximum posted speed limit of 25 mph. It does not meet federal motor vehicle safety standards applicable to passenger cars.

 **YAMAHA**
Revs Your Heart

THE EASY CHOICE™ WHEN LUXURY, PERFORMANCE AND VALUE MATTER



60
+ YEARS

YAMAHA MOTOR CORPORATION

With Yamaha, every challenge is an opportunity for adventure with our rich pedigree of motor vehicles, including snowmobiles, scooters, ATVs, personal watercraft vehicles and so much more.

BOATS



MARINE ENGINES

GENERATORS



RECREATIONAL VEHICLES

MOTORCYCLES



WAVERUNNERS®

ALL-TERRAIN VEHICLES



SNOWMOBILES

INTELLIGENT MACHINERY



POWER ASSIST BICYCLES

REMOTELY PILOTED HELICOPTERS



DRIVE ² CARS	4-17	ADVENTURER SPORT 2+2	14-15	BATTERY OPTIONS	28-29
REFUEL OR RECHARGE	6-7	UMAX® CARS	18-27	PARTS AND ACCESSORIES	30-63

SPECIFICATIONS	64-71
----------------	-------

Shown with optional Yamaha Genuine Accessories.

Where permitted by closed-community regulations or other local ordinance, the Personal Transportation Vehicle (PTV) shown is suitable for use on private/public roads with a maximum posted speed limit of 25 mph. It does not meet federal motor vehicle safety standards applicable to passenger cars.

INNOVATIVE FEATURES AT EVERY TURN

With bold colors and modern body styling, our Drive² line-up looks better than ever, but the biggest change is the one you don't see—a smoother ride.



Shown with optional Yamaha Genuine Accessories.

Where permitted by closed-community regulations or other local ordinance, the Personal Transportation Vehicle (PTV) shown is suitable for use on private/public roads with a maximum posted speed limit of 25 mph. It does not meet federal motor vehicle safety standards applicable to passenger cars.

SEE MORE ONLINE!
Scan now to watch all the Drive² features in action.



INDEPENDENT REAR SUSPENSION

This comes standard on all Drive² PowerTech Li, Drive² PowerTech AC, and Drive² QuietTech EFI models. Experience stability and comfort.



STORAGE BIN WITH NO-SLIP MAT

34% larger to keep more valuables in place.



REAR FOLD-DOWN SEAT

Create a 200lb capacity storage space with the flip down seats — available in tan or black. (Optional)



LED HEADLIGHTS AND TAILLIGHTS

Automotive-inspired LED lights shine brighter and use only a fraction of the energy. (Optional)



FRONT SUSPENSION

Fully independent front suspension for maximum performance and comfort.



TWO USB CONNECTIONS

Easily maintain power and stay charged.



CLIMAGUARD™ SUN TOP

Protect occupants from the elements with a dual gutter system. 33% larger size than the nearest competitor.



AUTOMOTIVE-STYLE DASH

Fully equipped with larger cup holders, a place for two range finders and mobile devices, plus USB connections.

Metallic	Onyx
In-Mold	Glacier
Matte	Titan
Metallic	Peridot
Metallic	Coral Red
Matte	Arctic Drift
Metallic	Carbon

AVAILABLE COLORS

WITH YAMAHA, THE ONLY QUESTION IS

REFUEL OR RECHARGE?

EVERYTHING ELSE IS THE EASY CHOICE

If you're looking for the profits of a gas car but the quietness of an electric, our QuieTech EFI fits the bill.

If the term "worry-free" is music to your ears, then our PowerTech Li electric car could be your top pick

Either way, ultimate comfort is always yours.



Shown with optional Yamaha Genuine Accessories.

Where permitted by closed-community regulations or other local ordinance, the Personal Transportation Vehicle (PTV) shown is suitable for use on private/public roads with a maximum posted speed limit of 25 mph. It does not meet federal motor vehicle safety standards applicable to passenger cars.

THE ONLY LITHIUM-ION-POWERED PTV WITH IRS

We engineered and optimized every last detail while creating an ideal balance between efficiency and driving comfort. For the first time ever, Independent Rear Suspension (IRS) now comes standard on the Drive² PowerTech Li models. With added comfort and premium shock absorption, now you can enjoy the smoothest ride yet.

DRIVE FARTHER
AND SMOOTHER WITH
INDEPENDENT REAR
SUSPENSION.



**ZERO
MAINTENANCE**

No watering, no tightening.

**8 YEAR
BATTERY LIFE**

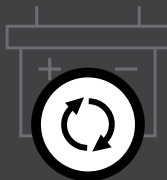
Estimated based 6 miles/day.

**38 MILES
DRIVING RANGE**

When driven on a flat track.



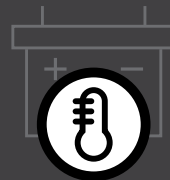
Optimized by
Yamaha, the
LiFePO₄ batteries
are safer than
other lithium
battery options.



LONGER LIFE SPAN



RATED HIGHER IN SAFETY



BEST THERMAL STABILITY

Shown with optional Yamaha Genuine Accessories

Where permitted by closed-community regulations or other local ordinance, the Personal Transportation Vehicle (PTV) shown is suitable for use on private/public roads with a maximum posted speed limit of 25 mph. It does not meet federal motor vehicle safety standards applicable to passenger cars.



IT'S ALL ABOUT THE JOURNEY

The Drive² PowerTech AC car just keeps getting better. We have paired the same energy-efficient, electric solution you can rely on with the best in leading-edge upgrades. You can navigate terrain with complete comfort and ease with our Drive² PowerTech AC's Independent Rear Suspension (IRS). With other valuable features like standard USB ports and a padded steering wheel, you will wonder how you ever drove any other car.



TROJAN T-875 FLA
BATTERY COMES STANDARD



REAR FACING
FOLD-DOWN SEAT
KIT WITH

**200LBS
OF STORAGE
CAPACITY**



Shown with optional Yamaha Genuine Accessories

Where permitted by closed-community regulations or other local ordinance, the Personal Transportation Vehicle (PTV) shown is suitable for use on private/public roads with a maximum posted speed limit of 25 mph. It does not meet federal motor vehicle safety standards applicable to passenger cars.



QUIETECH EFI: THE ULTIMATE LUXURY GAS CAR

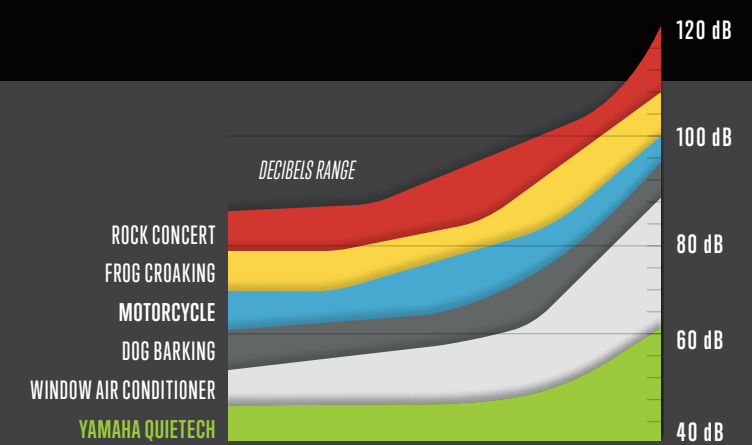
Our Personal Transportation Vehicles take the effort out of errands. The Drive² car handles like a dream and makes even short trips fun! We developed our QuietTech EFI technology to create a quieter, more fuel-efficient ride, so you can spend less money on fuel and more on doing the things you love.

261 MILES
AVERAGE RANGE
Between fill-ups.

45 MPG
FUEL ECONOMY



INDUSTRY-FIRST FULLY INDEPENDENT REAR SUSPENSION (IRS)



**A gas car
that is almost
as quiet as
an electric.**

Shown with optional Yamaha Genuine Accessories

Where permitted by closed-community regulations or other local ordinance, the Personal Transportation Vehicle (PTV) shown is suitable for use on private/public roads with a maximum posted speed limit of 25 mph. It does not meet federal motor vehicle safety standards applicable to passenger cars.

THE BEST OF VALUE AND VERSATILITY

Don't let that comfortable seating and sporty design fool you. The Adventurer Sport 2+2 may play nice, but when it's time to take on a tough job, it's ready to work hard. Easily go from cruising around the block with friends to maintaining the community garden or hauling gear for a family camping trip with 250 lbs. of payload capacity, large 20" tires and a lifted suspension.

POWDER-COATED FRONT BRUSH GUARD COMES STANDARD



FOLD-DOWN SEAT KIT

20 INCH TIRES

2 INCH LIFT KIT

GAS & ELECTRIC
OPTIONS AVAILABLE

(Not available in lithium.)



Shown with optional Yamaha Genuine Accessories

Where permitted by closed-community regulations or other local ordinance, the Personal Transportation Vehicle (PTV) shown is suitable for use on private/public roads with a maximum posted speed limit of 25 mph. It does not meet federal motor vehicle safety standards applicable to passenger cars.



REFRESH YOUR PTV WITH BOLD COLOR OPTIONS



ALL THE POWER OF YAMAHA IN ONE CAR

Whether it's a day at the beach or a day filled with errands, the UMAX Rally goes where no other light utility vehicle can, making it yet another reason why Yamaha is The Easy Choice.™



Shown with optional Yamaha Genuine Accessories.

Where permitted by closed-community regulations or other local ordinance, the Personal Transportation Vehicle (PTV) shown is suitable for use on private/public roads with a maximum posted speed limit of 25 mph. It does not meet federal motor vehicle safety standards applicable to passenger cars.

GAS & ELECTRIC OPTIONS AVAILABLE

(Not available in lithium.)

ULTIMATE PROTECTION

The UMAX Rally and UMAX One & Two feature lifted suspension and 23" tires wrapped around 12" V-window wheels. Equipped with a Yamaha Genuine Brush Guard, objects both large and small don't stand in the way.



DUMP BED

More volume than ever before to get the job done.



TILT BED FEATURE

Easily unlock the bed for quick unloading.



RECEIVER HITCH

Comes standard on all UMAX and UMAX Rally Vehicles. Not Available on the Rally²⁺².



CONVENIENT SIDE-FILL GAS TANK

Makes for a quick, efficient fill-up.



UNDER-HOOD STORAGE COMPARTMENT

Sizable storage area designed for convenience.



AUTOMOTIVE-STYLE DASH

Completely redesigned for today's professional.



6" CLEARANCE + ELEMENT TOUGH

No need to worry about getting stuck with 6" of clearance. Plus, keep dry through the harshest terrain with Yamaha Genuine fender flares.

Metallic	Coral Red
Metallic	Bluestone
Metallic	Evergreen
Metallic	Carbon
	Glacier

AVAILABLE COLORS

GET THE JOB DONE WITH PREMIUM POWER AND TORQUE

Our UMAX® lineup was expertly designed to get the job done, however big or small. Build your ideal vehicle using our robust range of custom options to ensure you get the most out of your day.

WITH THE DFK UMAX HARD CAB ENCLOSURE ADD-ON, RIDERS WILL ENJOY THE CONVENIENCE AND PROTECTION FROM THE ELEMENTS WITH EASY-OPEN SIDE DOORS.



UMAX ONE
AVAILABLE IN GAS

UMAX TWO
AVAILABLE IN GAS AND ELECTRIC

Shown with optional Yamaha Genuine Accessories.

Where permitted by closed-community regulations or other local ordinance, the Personal Transportation Vehicle (PTV) shown is suitable for use on private/public roads with a maximum posted speed limit of 25 mph. It does not meet federal motor vehicle safety standards applicable to passenger cars.



Shown with optional Yamaha Genuine Accessories.



BUILD YOUR CUSTOM UMAX[®] WITH VIBRANT COLOR OPTIONS



BLUESTONE
Metallic



EVERGREEN
Metallic



CORAL RED
Metallic



CARBON
Metallic



GLACIER

A COMFORTABLE RIDE EQUIPPED FOR ANY JOB

The Saturday itinerary is set: some yard work in the morning, your favorite pizza spot for lunch with friends and then some hardware store errands* before calling it a day. With comfortable convertible seating, plenty of storage, and an edgy design that matches your style, the UMAX Rally²⁺² not only fits your job, but it also fits your life.

Metallic	Onyx
	Glacier
Matte	Titan
Metallic	Coral Red
	Cyan
Metallic	Bluestone
Metallic	Carbon

AVAILABLE COLORS

STORAGE FOR SPORTS EQUIPMENT, GROCERIES AND MORE



TACKLE YOUR TO-DO LIST

Rear facing
fold-down seat kit
has 200lbs worth of
storage capacity.



Shown with optional Yamaha Genuine Accessories

Where permitted by closed-community regulations or other local ordinance, the Personal Transportation Vehicle (PTV) shown is suitable for use on private/public roads with a maximum posted speed limit of 25 mph. It does not meet federal motor vehicle safety standards applicable to passenger cars.

REFRESH YOUR PTV WITH BOLD COLOR OPTIONS



ONYX
Metallic



GLACIER



TITAN
Matte



CORAL RED
Metallic



CYAN



BLUESTONE
Metallic



CARBON
Metallic



COMMAND YOUR RIDE WITH UNRELENTING POWER

Choose one of our two trusted battery options. No matter your choice, you are sure to have efficient, reliable power in all of your cars.

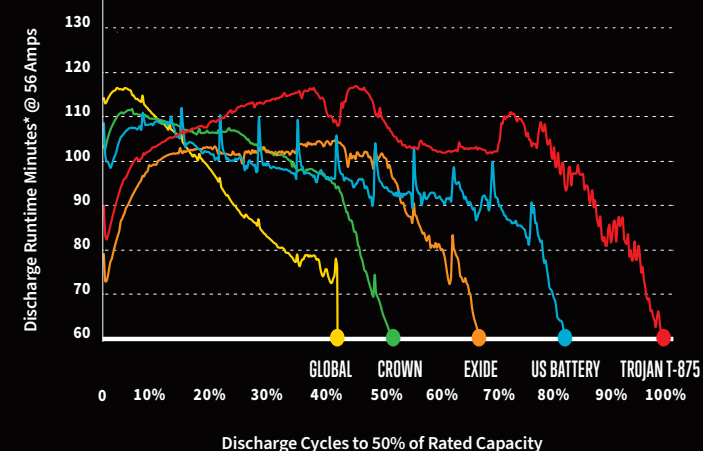


TROJAN T-875 FLA PROVEN PERFORMANCE TIME AFTER TIME

This rock-solid power source is undeniably strong, dependable, and the perfect complement to our Yamaha PTV. It will always get you where you need to go.

Vehicles compatible with this battery option:
Drive² PowerTech AC, Adventure Sport 2+2, UMAX Rally, UMAX Rally²⁺² and UMAX Two.

INDEPENDENT LABORATORY TESTING OF 8-VOLT BATTERIES



* Based on the averaging of two completed separate tests on two batteries for each brand.



LiFePO4 WE MADE A GREAT BATTERY BETTER

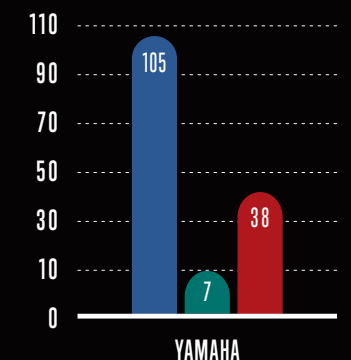
Our lithium-ion battery was manufactured by RoyPow[®] and optimized by Yamaha to ensure integrity and unmatched power. We've taken the time to engineer better overall performance for your long-term peace of mind.

- Safer than other lithium battery chemistry options for long-term peace of mind.
- Designed to charge at a speed that yields optimal output performance.
- Even after the 5-year warranty, the battery could still have 80% amp-hour life remaining!
- No water filling, no terminal tightening or cleaning.

Data is based on Yamaha's flat track simulation (Competitors may show different data based on a different testing environment). Based on the averaging of two completed separate tests on two batteries.

Vehicles compatible with this battery option:
Drive² PowerTech Li

EFFICIENT CHARGING



● Amp Hours ● Charging time ● Miles per charge





**DON'T EXPECT IT.
DEMAND IT!®**

All Yamaha Genuine Parts and Accessories have a three-year limited warranty, unless otherwise specified.

PARTS AND ACCESSORIES

FUSIONFIT™

Yamaha's exclusive FusionFit™ Bed Attachment Kit is the base that will keep your rakes, shovels, edgers, trimmers and other long-handled tools always at-the-ready; our accessory designers and engineers worked with our teams to create precise integrations that guarantee the unique fitment your Yamaha deserves.

Using CAD modeling, FusionFit features meticulous mounting points per unit per accessory that ensures the most accurate installation system possible. FusionFit allows for the tightest tolerances that are unmatched and impossible to replicate with aftermarket products.



UMAX FusionFit™ Bed Attachment Kit

Our FusionFit™ Bed Attachment Kit will help keep your rakes, shovels, guns, bows and other long-handled tools always at-the-ready. Yamaha's FusionFit accessory system provides a tool-less design that allows you to "click and go" with only a quarter turn. An integrated padlock slot gives you the option to easily secure your cargo and go. Fits 2019-2020 UMAX One/Two, UMAX One/Two Rally, UMAX Range Picker, and UMAX One/Two with Hard Cab models. Sold in pairs.

J0G-F34A0-V0-00

NOTE: Requires use of the separately sold ATV TEK V-GRIP™ or ATV TEK FLEXGRIP™ or ATV TEK Elite Series Cam Lock Grip. (Both are available in singles and doubles). Visit ShopYamaha.com to see all options and pricing.



ATV TEK V-GRIP™

The ATV TEK V-GRIP™ offers a true custom fit for whatever tool you find yourself needing to carry. With effortless installation, unmatched versatility, and a rock solid mounting base, the V-GRIP design isolates recoil and vibration, ensuring your tools stay where you put them. Single kit includes (2) grips, (2) mounting bases, (2) rubber snubbers and all necessary hardware. Fits with UMAX FusionFit™ Bed Attachment (Double kits contain (2) Single kits in addition to the sliding "T"-Bracket for ultimate adjustability).

V-GRIP SINGLE
ABA-VFG10-00-00

V-GRIP DOUBLE
ABA-VFG20-00-00

NOTE: Requires a UMAX FusionFit Bed Attachment Kit.



ATV TEK FLEXGRIP™ PRO

The ATV TEK FLEXGRIP™ PRO provides an additional 16" of side-to-side (8" per side), horizontal adjustment and offers a true, custom fit with increasing rigidity for whatever tool you find yourself needing to carry. Finger-adjustable knobs allow for quick, tool-free adjustments on the fly. Single kit includes (2) grips, (2) mounting bases, (2) rubber snubbers, and all necessary hardware. Fits with UMAX FusionFit Bed Attachment. (Double kits contain (2) Single kits in addition to the sliding "T"-Bracket for ultimate adjustability).

FLEXGRIP PRO SINGLE
ABA-FFG10-00-00

FLEXGRIP PRO DOUBLE
ABA-FFG20-00-00



ATV TEK Elite Cam Lock Grip

The ATV TEK V-GRIP offers the most versatility in one multi-use V-Grip. A truly custom fit for your handled tools, soft gun case, bow, ice auger or any other item. Highly adjustable to ensure a perfect, secure fit. Largest size range accommodates more items with infinite locking positions. Quickly and easily access your gear with the tool-free, ratcheting design. Flip cam lock ensures your gear won't fall out while you're hard at work.

Kit includes (2) Elite Cam Lock Grips, (2) mounting bases and all necessary hardware. Fits with UMAX FusionFit Bed Attachment.

ABA-ATVCA-ME-S1

AUDIO



Bluetooth® Audio Controller

Make your sound system just as easy to control in your Yamaha as it is in your family car with our Bluetooth® Audio Controller that allows you to change songs, adjust volume and pause/play. Pairs perfectly with the MA100 Speaker/Amp Package (GCA-MA100-00-00)—sold separately. Universal fit for most golf cars.

SBT-BTVC0-00-14

NOTE: Requires audio source.



Overhead AM/FM Bluetooth® Audio System

Instead of playing music through your cellphone speakers, enjoy your favorite tunes through our Overhead AM/FM Stereo with Bluetooth® that can withstand the harshest conditions, takes up none of your car space, and gives you impeccable sound quality. This system is fully weatherproof and features 3.5mm AUX-in and USB charging, new SSV Works® waterproof, marine-grade 6.5" speakers, six preset equalizer options, Bluetooth®, AM/FM tuner with LCD backlit display and internally integrated antenna, integrated hyper-white, six LED dome light. Includes wiring, mounting hardware, and step-by-step instructions (simple 2-wire installation). Fits The Drive and Drive² commercial cars and all 2019-2023 UMAX utility vehicles with factory Sun Top.

J0G-H81C0-V0-00

NOTE: Easily add aftermarket amplifiers or powered subwoofers through the 4v RCA low-level pre-output.

This document contains many of the valuable trademarks and service marks owned and used by Yamaha throughout the world. The document may also contain references to other company, brand, and product names that may be the trademarks/service marks of their respective owners. Unless noted otherwise, these company, brand, and product names are used herein for identification purposes only, and reference to any names, marks, products, or services of third parties do not constitute or imply endorsement, sponsorship, or recommendation of the third party or the product or services.



EcoXGear® SoundExtreme Sound Bar

With the EcoXGear SoundExtreme Sound Bar, you will enjoy premium sound quality with marine-grade, waterproof speakers. Designed for Bluetooth pairing with smartphones, you can listen to music, podcasts or make phone calls in style.

ACC-ECOXT-R0-26

NOTE: Requires a custom mounting solution and wiring to 12V source.



10" 500-watt Subwoofer by SSV Works

Need more bass in your space? SSV Works Premium Marine Subwoofer started the revolution. They produce great volume and clarity designed for the outdoor environment for the powersport enthusiast.

JOD-H81S0-V0-00



MA100 Speaker/Amp Package

Kick your sound game up a notch by adding this MA100 Speaker/Amp Package to your Drive². Amplify your favorite songs from basic to banging with this salt and corrosion-resistant system that will keep the entertainment going as you cruise. Universal fit for most golf cars.

GCA-MA100-10-00



Pair of Speaker Pod Clamps by SSV Works

Optional mounts for the Speaker Pod Kit #JOD-H81D0-V0-00.

- Round Clamps #J0G-H81D0-M0-00. Fits most utility vehicles with 1.5" round supports
- Square Clamps #J0D-H81D0-M0-00. Fits most golf cars with 1.0" square supports

JOD-H81D0-M0-00



Speaker Expansion Harness by SSV Works

Universal fitment for 4-passenger tops.

JOD-H81D0-L0-00



6.5 Speaker Pod Kit by SSV Works

SSV Works' new Premium 6.5" Marine-Grade Weatherproof Speakers will transform the sound of your golf car stereo!

JOD-H81D0-V0-00



Cabana Golf Bag Cover by Club Pro Products®

Keep the elements out and your performance undisturbed with this convenient protective cover for your clubs, or any other prized possession as you go from event to event. Fits all The DRIVE and Drive² models.

Four-year limited warranty.

- 1 Black JOB-K8379-T0-00
- 2 Taupe JOB-K8379-V0-00



Yamaha Club and Ball Washer

Just because your equipment gets dirty doesn't mean the game stops. Keep on pace by getting must-have accessories like our Golf Club and Ball Washer. Fits all DRIVE and Drive² models.

GCA-JW131-01-00

NOTE: The Club and Ball Washer, Sand Bottle, Sand Bucket, and Coolers cannot be used in conjunction with The DRIVE Rear Facing Seat.

Will not work side by side with additional Yamaha accessories mounted to sweater basket.



Yamaha Sand Bottle Kits

Always have sand on hand with our new sand bottle kits. These reconfigured kits have bottles that include comfortably integrated handholds (making them easy to grip with gloves), have larger square opening allowing for quick filling without removing bottom lid, as well as an even flow of sand to fill divots more effectively. Fits all DRIVE and Drive² models. Three-year limited warranty.

SINGLE SAND BOTTLE KIT

- GCA-J0A40-00-00 (with handle)**
- GCA-J0B40-00-00 (without handle)**

DUAL SAND BOTTLE KIT

- GCA-J0A41-00-00 (with handle)**
- GCA-J0B41-00-00 (without handle)**

SAND BOTTLE ONLY

- GCA-J0A40-21-00 (with handle)**
- GCA-J0B40-21-00 (without handle)**

NOTE: Fits existing filling stations at golf courses currently using Yamaha sand bottles. Sand bottles with or without handle are interchangeable. The Club and Ball Washer, Sand Bottle, Sand Bucket, and Coolers cannot be used in conjunction with The DRIVE Rear Facing Seat.



Yamaha Premium Cooler Kit

Whether enjoying a day of golfing, shore fishing, riding through your community or simply out exploring, our new and improved insulated beverage cooler for The DRIVE and Drive² will be the perfect companion. Rigorously tested to outperform other coolers, this addition conveniently holds eight 16oz bottles or twelve 12oz aluminum cans including extra space for ice. 544 cubic inch (2.35 gallon) capacity. Hold 9kg (19.8lb) total. Fits all DRIVE and Drive² models.

GCA-J0B32-00-00

NOTE: The Club and Ball Washer, Sand Bottle, Sand Bucket, and Coolers cannot be used in conjunction with The DRIVE Rear Facing Seat.

Will not work side by side with additional Yamaha accessories mounted to sweater basket.



Yamaha Sand Bucket Kits

Easily store sand, small items, and more by getting the newly improved Sand Bucket Kit. Completely redesigned to surpass stringent testing. Fits all DRIVE and Drive² models.

GCA-J0A30-00-00

NOTE: The Club and Ball Washer, Sand Bottle, Sand Bucket, and Coolers cannot be used in conjunction with The DRIVE Rear Facing Seat.

Will not work side by side with additional Yamaha accessories mounted to sweater basket.



The DRIVE/Drive² Cooler

Roto-molded, double-wall insulated construction with attached flip-up lid. Easily removed and portable using the attached handle, plus, it is stackable for easy storage. 515 cubic inch (2.23 gallon) capacity. Includes necessary mounting hardware to install on either the left or right side. 3-year limited warranty. Will not work side-by-side with additional Yamaha accessories mounted to sweater basket. Kits include all necessary mounting hardware, brackets and complete detailed installation instructions.

Cannot be used in conjunction with DRIVE Rear Facing Seat.

GCA-JW132-11-GR

GCA-JW132-1100 2013



DRIVE² Gauge Fuel Cap

Take the guesswork out of refueling and confidently send your golfers to the course knowing that they have proper fuel throughout the round. With our Gauge Fuel Cap, golf course operators can quickly check the fuel level simply by lifting the seat. Make the job even easier with our fuel cap's large, easy-to-read dial graphics as you refuel.

GCA-J0A87-00-PC



UMAX DropIn™ Cooler

With the UMAX DropIn™ Cooler, cold drinks are always conveniently stored and ready to go when and where you need them. Perfect for tournaments, company outings and more, this beverage storage solution provides instant profit gains.

Cooler Lid Opening: 24.75" L x 15.4" W
Internal Volume: 16,748in³ (72 gallons)
Capacity*: 200 lbs total

- 1 UMAX One.....GCA-19HDR-OP-U1
- 2 UMAX Two.....GCA-19HDR-OP-U2

**Limited by unit's GVWR and payload capacity*



Drain Kit for UMAX DropIn™ Cooler

Tired of all the mess from cleaning and draining your DropIn™ Cooler? No more water seeping under the cooler and sitting in the bed. Conveniently attached using dual drain outlets to make cleaning and draining a breeze. Connect hoses directly to the cooler to control the drainage of tank liquid to a designated location.

Includes 2 – all-brass construction on/off ball valves, 2 – 4ft. PVC reinforced hose with brass 3/4in GHT connectors, O-rings, and a 1-3/4 oz tube of pipe thread sealant.

Fitment: GCA-19HDR-OP-U1 and GCA-19HDR-OP-U2 UMAX DropIn™ Coolers by 19th Hole Cart LLC™.

GCA-19UMD-RA-IN



USB Charge Socket (Set)

Allow players to conveniently charge devices on both sides of the vehicle, a win-win for drivers and passengers. Each USB socket can be easily installed in various locations on the UMAX. Fits all 2019-2023 UMAX and UMAX Rally models.

ELECTRIC CARS
GCA-J0C70-00-00

GAS CARS
GCA-J0A70-00-00

NOTE: Both electric and gas models include necessary fuse and voltage regulator. Uses factory mounts and plug-and-play harness.



Accessory Mount Clamps

These 1.5" clamps allow you to rigidly mount additional accessories or lighting, like the Bullet Accessory Lights (flood pattern (2HC-H4104-L0-00) and spot pattern (2HC-H4104-V0-00) are sold separately). Sold in pairs. Fits all 2019-2023 UMAX and UMAX Rally models, except the UMAX Bistro models.

2HC-F34A0-V0-00



12v Accessory Plug and Receptacle Kit

Never go without power again with this corrosion-resistant, water-resistant, marine-grade constructed 12v Accessory Plug and Receptacle Kit. Fits any vehicle with a 12v DC power source. Wiring modifications required. Electric models require 48V Voltage Regulator Accessory Kit, J0J-H1910-V0-00 (sold separately).

12v ACCESSORY PLUG ONLY
DBY-ACC56-00-85

12v ACCESSORY RECEPTACLE ONLY
ATV-12VPC-00-RC



Waterproof USB Dual Charge Port

Add the luxury of a waterproof USB dual charge port to your Personal Transportation Vehicle, boat, ATV, Side-by-Side, motorcycle, or even automobile. (The USB charge port uses the same mounting hole and connectors as the DC receptacle, making upgrading to USB a snap.) Universal fit for most Personal Transportation Vehicles, boats, side-by-sides, and other 12-volt applications. Wiring modifications required. Electric models require 48V Voltage Regulator Accessory Kit, J0J-H1910-V0-00 (sold separately).

GCA-JW970-00-00



Backlit Yamaha Logo Light

Add this Backlit Yamaha Logo Light anywhere from the front cowl of your Drive² vehicle. (Plug-and-play installation on Drive² PTV and Fleet models with Yamaha Genuine upgrade light kits). Fits all 2017-2023 Drive² Models.

J0B-H4104-V0-PC

YAMAHA LIGHTS THE WAY

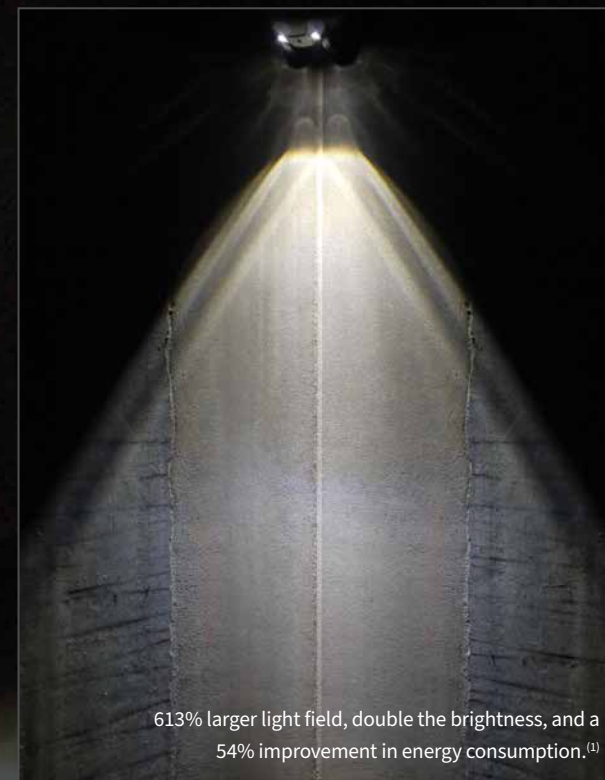
What drives us? Our unwavering dedication to innovate the best for our customers. And at Yamaha, we know nothing will continue to be the best unless it evolves.

Now, all of our premium personal transportation vehicles come outfitted with LED headlights for a brighter, clearer ride.

Now more powerful than ever before, our lights deliver exceptionally less drain on batteries and produce double-to-triple the amount of visibility. With Yamaha, you can enjoy your ride confidently, even after the sun sets.

MAXIMUM VISIBILITY Minimum Energy Used

YAMAHA STANDARD



613% larger light field, double the brightness, and a 54% improvement in energy consumption.⁽¹⁾

THE DRIVE² LIGHT SYSTEM



LED FRONT LOGO



LED HEADLIGHTS



LED TURN SIGNALS



LED TAILLIGHTS



Shown with flashing amber turn signal on.

Drive² Premium PTV Upgrade Kit (EFI/AC)

Features a plug-and-play upgradeable premium harness, all new phosphor coated chip-on-board (COB) module that features full-power flashing amber LED front turn signals, the all-new basic amber LED front turn signal chip-on-board (COB) module, 20-diode LED taillight and brake lights, front and rear LED turn signals, 4-way flasher, horn, and side reflex reflectors. Includes Yamaha's exclusive, automotive-style, premium turn signal stalk that incorporates the headlight on/off switch, turn signal handle, and integrated horn button. Fits all Drive² PTV models.

GCA-J0D12-01-PT



Drive² Ultra-Premium PTV Upgrade Kit

Features everything from the Premium Kit, in addition to the all-new waterproof/dustproof premium white LED accent/amber LED front turn signal chip-on-board (COB) module with clear lens assembly, as well as the all-new 26-LED sequential stop-tail-turn rear lights. Fits all Drive² PTV models.

GCA-J0D12-00-UP

	PREMIUM		ULTRA-PREMIUM	
	PTVA	PTVE	PTVA	PTVE
Model Type	PTVA	PTVE	PTVA	PTVE
Model Code	J0D PTV QuieTech EFI	J0E PTV PowerTech AC	J0D PTV QuieTech EFI	J0E PTV PowerTech AC
Upgrade Light Kit Part Number	GCA-J0D12-01-PT		GCA-J0D12-00-UP	
Upgrade Light Kit Name	DR2PTV EFI J0D/AC J0E PREM UPG KIT		DR2PTV EFI J0D/AC J0E ULT-PRM UPG KIT	
Harness	Plug-N-Play		Plug-N-Play	
Tail / Brake Light	20-LED Included		Sequential 26-LED	
4-Way Flasher	Included		Included	
Rear LED Turn Signals	Included		Included	
Front Turn Signal	Basic COB LED Amber		Premium LED Amber with Accent Light	
Relay Harness	-		Included	
Driver Harness	-		Included	
Side Reflectors	Included		Included	

THE NEXT GENERATION OF LIGHT KITS

The UMAX Premium Light Upgrade Kit and the UMAX Ultra-Premium Light Upgrade Kit will light your path and keep others informed about your travels. Both Premium and Ultra-Premium Light Upgrade Kits include Yamaha's exclusive new plug-and-play wiring harness that is fully expandable for further upgrades, such as turn signal indicators, side markers, and center high-mount stop/tail/turn lights (for future expansion for custom applications).

- Plug-and-play installation
- Harness is weather-tight with sealed connectors
- Turn signal stalk incorporates the headlight off-low-high beam selector knob
- Adds high-beam functionality to factory UMAX LED headlights
- Turn signal handle integrated horn button
- Includes Yamaha's exclusive LED taillights (J0G-H4503-V0-00)
- All Yamaha Upgrade Light Kits include all necessary mounting hardware and detailed instructions with pictures
- Fits all UMAX, UMAX Rally, and UMAX Rally²⁺² models



Shown with flashing amber turn signal on.

UMAX Premium Light Upgrade Kit

Features a plug-and-play upgradeable premium harness, all new phosphor coated chip-on-board (COB) module that features full-power flashing amber LED front turn signals, the all-new basic amber LED front turn signal chip-on-board (COB) module, LED taillight and brake lights, front and rear LED turn signals, 4-way flasher, horn, and side reflex reflectors. Includes Yamaha's exclusive, automotive-style, premium turn signal stalk that incorporates the headlight on/off switch, turn signal handle, and integrated horn button. Fits all UMAX, UMAX Rally, and UMAX Rally²⁺² models.

J0G-H43C0-T0-00



Shown with solid white accent light on.

UMAX Ultra-Premium Light Upgrade Kit

Features everything from the Premium Kit, in addition to the all-new waterproof/dustproof premium white LED accent/amber LED front turn signal chip-on-board (COB) module with clear lens assembly. Fits all UMAX, UMAX Rally, and UMAX Rally²⁺² models.

J0G-H43C0-V0-00



UMAX Headlight High/Low Switch

Add the option to switch between high- or low-beam front LED headlight with our Headlight High/Low Switch. With easy plug-and-play installation in the front dash panel, it will seamlessly match the factory headlight on/off switch. Fits all 2019-2023 UMAX and UMAX Rally models.

J0G-H25A0-V0-00

NOTE: Will not work with Premium or Ultra-Premium Light Upgrade Kits.



Bullet Accessory Lights

Make visibility easier with these 2.5" accessory lights that make an invaluable addition when your headlights can't reach. Our 10w LEDs shine an extremely bright beam while drawing very little power. Their compact size makes them versatile and allows you to mount them to just almost anywhere on your UMAX. Universal fit for most golf cars, boats, Side-by-Sides and other 12-volt applications.

FLOOD

2HC-H4104-L0-00

SPOT

2HC-H4104-V0-00

NOTE: Accessory Mount Clamps (2HC-F34A0-V0-00) required for installation on Support Sunroof Top or Front Brush Guards, all sold separately.



UMAX Yamaha Backlit Logo

Give your UMAX an intimidatingly gritty edge that'll make a statement wherever you go. Easily connects to factory headlight for plug-and-play wiring. Fits all 2019-2023 UMAX and UMAX Rally models.

J0G-H4104-V0-00

NOTE: Trimming of front grill required for installation.

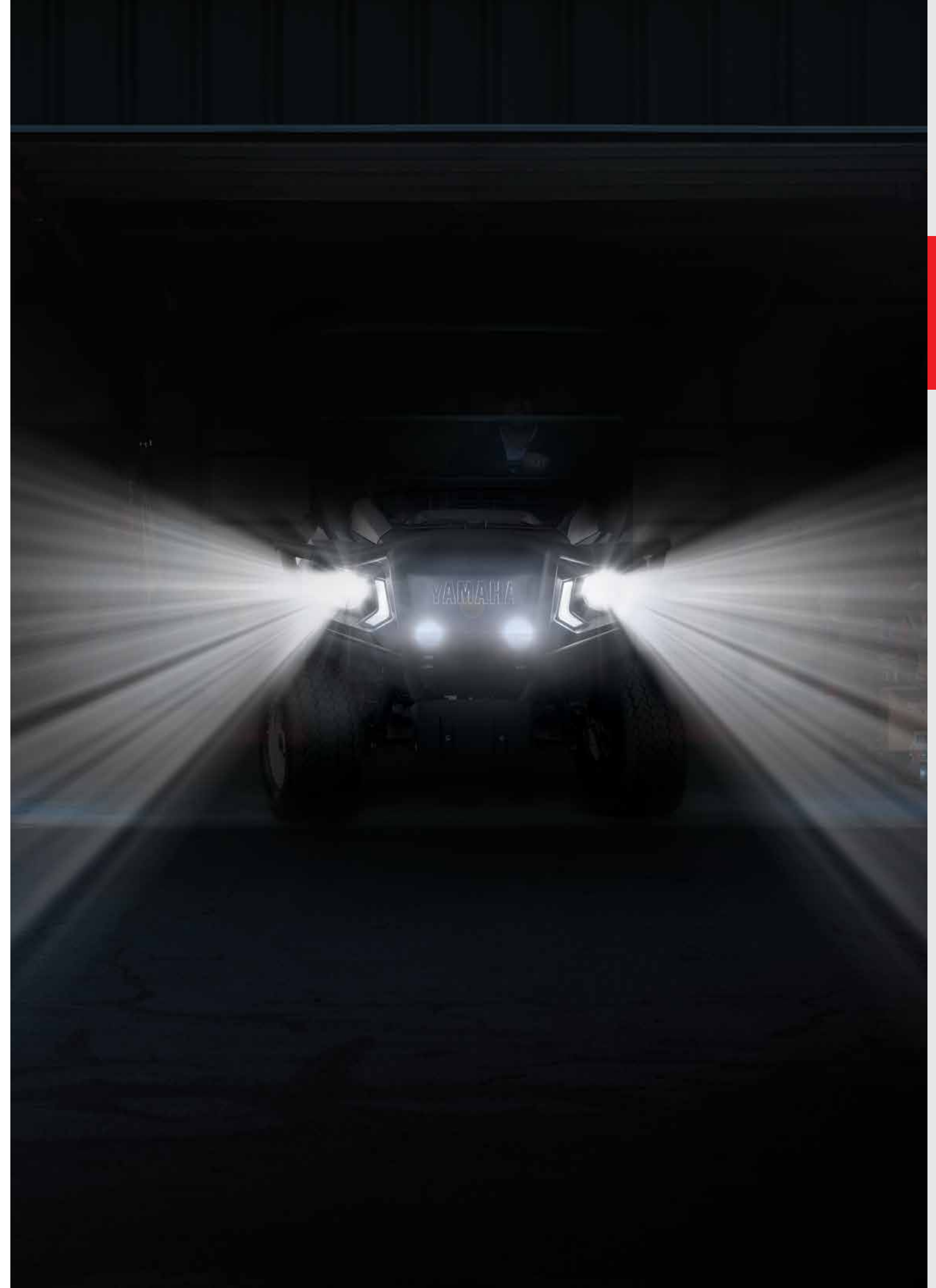


UMAX Taillights

Increase the visibility of your UMAX when operating at night or in low-light conditions by adding these LED taillights. Fits all 2019-2023 UMAX and UMAX Rally models.

J0G-H4503-V0-00

NOTE: Stop and turn signal functions require the Premium Upgrade Light Kit (J0G-H4503-T0-00) or the Ultra-Premium Upgrade Light Kit (J0G-H4503-S0-00), both sold separately. Taillights are included in both upgrade kits.



PROTECTION



Drive² Fender Flare Kit

Add sporty styling for an aggressive, tough look and feel while providing an extra level of protection from mud and water. Fender flares are made from a durable, injection-molded polypropylene, UV-resistant material. Fits 2017-2023 Drive² PTV models.

GCA-J2G56-00-00



Drive² Front Brush Guard

Give your Drive² protection on the front end while adding a rugged flair with this front brush guard that's designed to seamlessly integrate with the front profile all while creating a tough, aggressive look. Fits 2017-2023 Drive² PTV models.

GCA-J2G67-00-00



UMAX Fender Flares

Guard yourself and your UMAX vehicle even more with our wide, off-road, four-piece fender flare kit, designed and engineered to perfectly match your Yamaha in every way. Fits all 2019-2023 UMAX Rally models.

DEFENDER (WIDE)

JOG-F15E0-T0-00

DEFENDER JR. (NARROW) (INSET)

JOG-F15E0-V0-00

NOTE: Use of 23" tall tires requires 20mm lift.



UMAX Front Brush Guards

Protect the bold look of the grill, hood, and cowl longer. Fits all 2019-2023 UMAX Rally models.

SPORT FRONT BRUSH GUARD

JOG-F85F0-V0-00

SPORT FRONT BRUSH GUARD WITH HEADLIGHT PROTECTION

JOG-F85F0-R0-00

PRO TIP! For even more protection from brush and debris, add the Rear Tubular Brush Guard (JOG-F85F0-S0-00) and Side Steps (JOG-F11E0-V0-00), both sold separately.

NOTE: Will not work with Range Picker Mount.

PROTECTION



UMAX Cargo Bed Mat

Keep your cargo bed in "fresh out of the box" condition with our wear-resistant, durable Cargo Bed Mat. Made from a proprietary 10mm-thick, reinforced, engineered rubber that slows bed wear as it reduces noise and resonance when transporting cargo. Also, the mat's rough-and-tough styling perfectly matches your UMAX vehicle's look while the aggressive lug pattern helps prevent cargo from sliding. Fits 2019-2023 UMAX Rally One EFI and UMAX Rally Two EFI/AC models.

JOG-F7302-V0-00

NOTE: Fits UMAX Two models as is. Cutting of mat required to fit UMAX One EFI models.

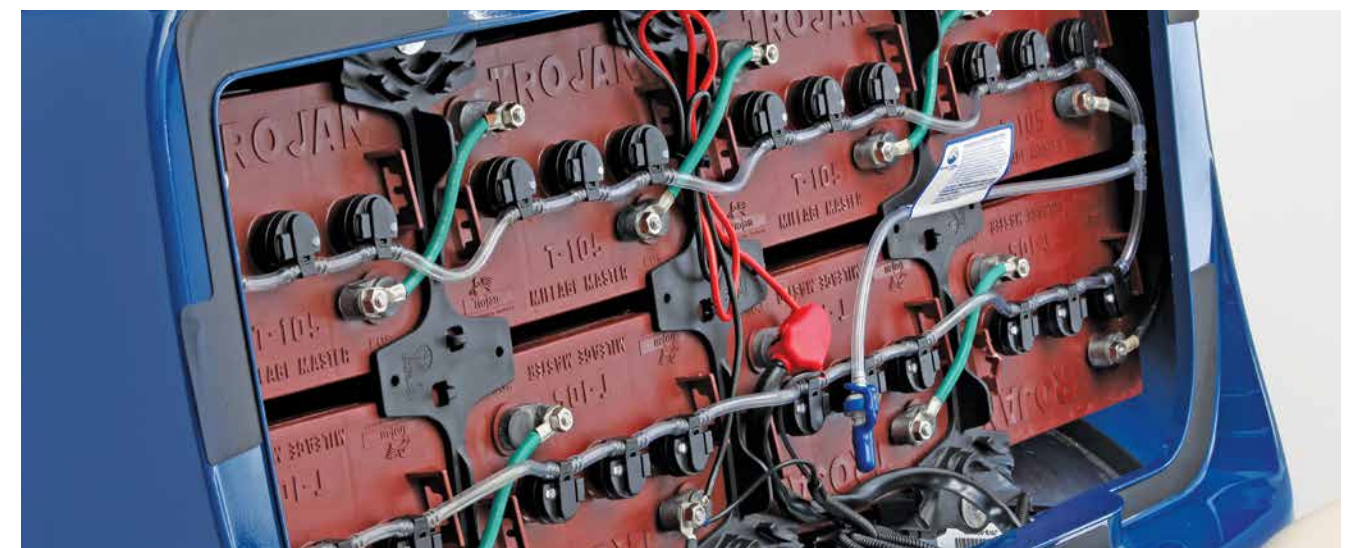


UMAX Rear Arm Skid Plate

Tackle rugged terrain with confidence after installing our Rear Arm Skid Plate to help guard against large rocks and other obstructive debris from harming your transaxle—all while perfecting your UMAX vehicle's tough styling. Fits all 2019-2023 UMAX Rally models.

JOG-F21A0-V0-00

SERVICE



BFS™ Battery Watering System

Maximize the battery life of your Yamaha by using the BFS™ Battery Watering System that'll make routine maintenance a breeze. Low water levels in lead acid batteries are the primary cause of shortened battery life. Using a watering system saves time and money by filling the batteries simultaneously, providing a safer environment by reducing operators' exposure to battery acid, improving battery life and performance. Fits all 2019-2023 UMAX AC models, 2010-2014 DRIVE PTV DC, 2015-2016 DRIVE AC, 2017-2023 Drive² PTV AC, and Drive² Adventurer Sport 2+2 AC models with flooded lead acid batteries. For your correct kit, verify your battery type (MFG/MDL).

SIX 8-VOLT TROJAN T875

GCA-JW286-30-00

EIGHT 6-VOLT TROJAN T105

GCA-JW286-40-00

NOTE: Requires Gravity Tank (GCA-JW286-00-23), sold separately.



Deionizer

Increase your Yamaha vehicle's battery life and run time by using our Deionizer system—a cost-effective, effortless way to purify the water used for battery watering. Prevent the build-up of impurities over time with this simple addition to your routine service, and it'll make a substantial impact on your battery life. For use with Pro-Fill® by Flow-Rite® Regulated Hose Supply (sold separately).

- 1 DEIONIZER
JN6-DEION-IZ-ER
- 2 REPLACEMENT PARTS - 600 REPLACEMENT CARTRIDGE
JN6-DEION-RP-LC



Pro-Fill® Regulated Water Supply Hose

If you plan to use your factory Trojan® HydroLink® watering system to fill multiple commercial cars in a quick succession, our Pro-Fill® Regulated Water Supply Hose is the perfect solution. For use with Pro-Fill® by Flow-Rite® or Trojan® HydroLink® watering systems. Will not work with Battery Watering Technologies.

GCA-JW281-00-00



BFS™ Gravity Tank

Use the BFS™ Gravity Tank to add water to your Battery Watering System (GCA-JW286-30-00 or GCA-JW286-40-00)—sold separately—using the power of gravity versus manually pumping the water into the system. For use on BFS™ by Battery Watering Technologies systems.

GCA-JW286-00-23

NOTE: No Deionizer needed with this.



Pro-Fill® Hand Pump

Manually add distilled water to your factory Trojan® HydroLink® watering system with this Pro-Fill® Hand Pump. For use with Pro-Fill® by Flow-Rite® or Trojan® HydroLink® watering systems. Will not work with Battery Watering Technologies.

GCA-JW285-00-00

NOTE: No Deionizer needed with this.



UMAX Cargo Bed Box

You've got a long workday planned. Leave none of your essentials behind with our heavy-duty, durable cargo box that doubles as a non-insulated cooler featuring an integrated drain plug. You'll enjoy easy installation and optimum capacity while matching your UMAX vehicle's uniquely rugged style. Fits 2019-2023 UMAX One Rally EFI and UMAX Two Rally EFI/AC models.

J0G-F83P0-V0-00



UMAX Sun Top Kit

Guard yourself against the Sun's glare, hanging brush, and other elements with the only sun top designed to completely match your UMAX vehicle in style and durability. Fits 2019-2023 UMAX One/Two Rally models.

J0G-K84A0-V0-00



Drive² ClimaGuard™ Sun Top

Stay out of the sun and guarded from the elements with our injection-molded factory ClimaGuard™ Sun Top—the only sun top designed to completely match your Drive² in style and durability.

Fits all DRIVE/Drive² models
Black Sun Roof Cover **JW1-K8314-21-00**
(Includes sun top skin only)

Black Sun Top Assembly **JW1-XK83A-20-00**
(Includes sun top skin and handles)

Fits 2007-2016 DRIVE models
Black Sun Top Kit **JW1-K84A0-20-00**
(Includes sun top skin with handles, sun top supports, drain tubes, and hardware)

Fits 2017-2023 Drive² models
Black Sun Top Kit **J0B-K84A0-10-00**
(Includes sun top skin with handles, sun top supports, drain tubes, and hardware)

PREMIUM SEATING



Drive² Touring Seats

We introduced our new Touring seat with contrast stitching, embossed tuning fork logos and 4 colors to choose from. Fits all 2017-2023 Drive² models.

DRIVE² FRONT ROW TOURING SEAT KIT

- 1** Gray Front Touring Seat **JOB-K8410-R0-00**
- 2** Beige Front Touring Seat **JOB-K8410-V0-00**
- 3** Brown Front Touring Seat **JOB-K8410-S0-00**
- 4** Black Front Touring Seat **JOB-K8410-T0-00**

PREMIUM SEATING



Classic Rear Facing Seat Kit with Upgraded Touring Seat

This Touring seat Cushion Set is a direct replacement for Yamaha's Classic Rear Facing Seat Kit featuring contrast stitching, embossed tuning fork logos and 4 colors to choose from. Fits all 2017-2023 Drive² with Rear Facing Seat Kit and all Adventurer Sport 2+2 models.

DRIVE² POWERTECH AC/QUIETECH EFI REAR FACING SEAT KIT WITH TOURING SEATS

- 1** Gray Rear Facing Touring Seat Kit **JOB-K8476-R0-00**
- 2** Beige Rear Facing Touring Seat Kit **JOB-K8476-V0-00**
- 3** Brown Rear Facing Touring Seat Kit..... **JOB-K8476-S0-00**
- 4** Black Rear Facing Touring Seat Kit..... **JOB-K8476-T0-00**

NOTE: Available now as factory installed option. Does not include front row Touring Seat (sold separately). Will not work with overhead audio system.



Vinyl Seat Cushion Assembly

Give your car a unique look and more luxurious feel by replacing your original seats with these stylish black seats made from high-quality Morbern® XLP™ vinyl.

Fits 2007-2016 DRIVE PTV, 2017-2023 Drive² PTV and Drive2 Adventurer Sport 2+2 models.

Seat BottomGCA-JW984-00-00
 Seat BackGCA-JW987-00-00

Fits 2019-2023 Drive² PTV and Drive² Adventurer Sport 2+2 models
 Seat BottomGCA-J0B84-21-BK
 Seat BackGCA-JW987-00-00



Drive² All-Weather Floor Mat

Experience ultimate comfort and style, at an affordable price, with this all-weather, rubber floor mat made from the highest quality synthetic rubber to ensure superior performance and absolute interior protection. Fits 2016-2023 Drive² PTV EFI and all 2016-2023 Drive² Adventurer Sport 2+2 models.

GCA-J0A72-00-00



Premium Side Mirror Kit

Eliminate your side-rear blind spots with this easily adjustable, mounted side mirror. Made with durable ABS plastic, this convex mirror fits any Personal Transportation Vehicle with 1" square sun roof supports.

GCA-JC181-00-00

NOTE: Fits left or right side. Sold separately.



Yamaha Carpet Set

Make your ride as comfortable as your family car with our rubber-backed floorboard carpet set that is extremely durable and features our embroidered Yamaha logo.

Fits 2017-2023 Drive² models

GrayGCA-J0A62-00-GY
 BlackGCA-J0A62-00-BK



Yamaha Kick Plate

Enhance your car's custom styling with our 38" T304 stainless steel, kick plate featuring an acid-etched Yamaha logo and hemmed edges for a superior finish. (Kit includes self-adhesive tape and plastic end caps and measures at 38"W x 2.67"H).

Fits 2007-2016 The DRIVE, 2017-2023 Drive², and all Adventurer Sport 2+2 models.
 GCA-JW189-00-00

10" WHEELS



10" 12-Spoke J-Series Alloy and All-Terrain Alloy Wheel Assemblies

10" 12-SPOKE J-SERIES ALLOY WHEEL ASSEMBLY

Give your Personal Transportation Vehicle a classic edge with this easy, 12-spoke J-Series Direct Displacement Alloy Wheel Assembly. Fits all 2015-2016 DRIVE PTV and 2017-2023 Drive² PTV models.

- 1 Silver GCA-J0E51-00-SL
- 2 Black Machine GCA-J0E51-00-BM
- 3 All-Satin Black GCA-J0E51-00-SB
- 4 Gold Machine GCA-J0E51-00-GD

10" 12-SPOKE J-SERIES ALL-TERRAIN ALLOY WHEEL ASSEMBLY

Make going off-trail a breeze with this 12-Spoke J-Series All-Terrain Alloy Wheel Assembly that will give you better traction and a ready-to-rumble appearance. Fits 2015-2016 The DRIVE PTV, 2017-2023 Drive² PTV, and all Adventurer Sport 2+2 models.

- 1-AT Silver GCA-J2G51-00-SL
- 2-AT Black Machine GCA-J2G51-00-BM
- 3-AT All-Satin Black GCA-J2G51-00-SB
- 4-AT Gold Machine GCA-J2G51-00-GD



10" Specter Sahara Tire

Get where you need to go with the trusted 10" Specter Sahara Tire. Fits Adventure Sport 2+2 models.

J2G-F5120-00-00



10" Stormtrooper Sahara Tire

The 10" Stormtrooper Sahara Tire tackles even the toughest terrain with ease. Fits Adventure Sport 2+2 models.

J2G-F5120-10-00



10" Tempest Sahara Tire

Scale hills, valleys and more with the 10" Tempest Sahara Tire. Fits Adventure Sport 2+2 models.

J2G-F5120-20-00



10" 16-Spoke V-Series Wheel Assembly

Incorporate your bold style through your Drive² with our 10" 16-spoke wheel assembly—includes a chrome center cap with Yamaha emblem, chrome lug nuts, a chrome valve stem cap, and a chrome valve stem cover. Fits 2015-2016 DRIVE PTV and 2017-2023 Drive² PTV models.

- Silver GCA-J0E51-20-SL
- Black GCA-J0E51-20-BM



10" Casino Alloy Wheel Assembly

Dress up your Drive² with our 10" Casino Alloy Wheel Assembly that daringly mixes stunning angles with detailed, black-accented finesse. Fits 2015-2016 DRIVE PTV and 2016-2023 Drive² PTV models.

- Black Machine GCA-JC352-00-BK
- Silver GCA-JC352-00-SL



Kenda UMAX 6 PLY UPG 10x7 V-Window

High style meets high functionality in the Kenda UMAX 6 PLY UPG 10x7 V-Window tires. With a handsome design fused with the ability to scale any terrain, this tire is one that will leave onlookers talking. Fits all UMAX One/Two models.

J0G-F510M-B0-SV

12" WHEELS



12" 16-Spoke V-Series Radial Alloy Wheel Assembly

V-Series alloy wheel assembly features the Kenda Kruizer KR20A tire, the Personal Transportation Vehicle industry's first true automotive steel-belted radial design tire specifically designed for Low Speed (LSV) and Personal Transportation Vehicles (PTV) that are approved to be used on golf courses and in golf course communities. Combined with the all-new V-Series alloy wheel by Wheel Mate Products for the ultimate driving experience. Fits 2015-2016 The DRIVE PTV and 2017-2023 Drive² PTV models.

- 1 Silver Machine GCA-J0D52-2L-SL (Driver Side) | GCA-J0D52-2R-SL (Passenger Side)
- 2 Gunmetal GCA-J0D52-2L-GM (Driver Side) | GCA-J0D52-2R-GM (Passenger Side)
- 3 Bronze GCA-J0D52-2L-BZ (Driver Side) | GCA-J0D52-2R-BZ (Passenger Side)
- 4 Black Machine GCA-J0D52-2L-BM (Driver Side) | GCA-J0D52-2R-BM (Passenger Side)
- 5 Satin Black GCA-J0D52-2L-SB (Driver Side) | GCA-J0D52-2R-SB (Passenger Side)



12" Motohammer Battle Wheel

Scale any terrain with the 12" Motohammer Battle Wheel. Built with abundant treads and a sharp silhouette, this tire is one your riders can always rely on. Fits all UMAX Rally and UMAX Rally²⁺² models.

VDF-12RLY-27-27

14" WHEELS



14" 12-Spoke J-Series with 205/35 Kenda KR20A SBR Wheel Assembly

With a sophisticated full-face design and robust treads, the 14" 12-Spoke J Series with Kenda KR20A SBR wheel assembly is one you can trust. Fits all Drive² models.

- 1 Black Machine GCA-J0D54-0L-BM (Driver Side) | GCA-J0D54-0R-BM (Passenger Side)
- 2 All-Satin Black with Machine Groove GCA-J0D54-0L-BG (Driver Side) | GCA-J0D54-0R-BG (Passenger Side)
- 3 All Satin Black GCA-J0D54-0L-SB (Driver Side) | GCA-J0D54-0R-SB (Passenger Side)
- 4 Silver Machine GCA-J0D54-0L-SL (Driver Side) | GCA-J0D54-0R-SL (Passenger Side)
- 5 Bronze with Machine Groove GCA-J0D54-0L-ZG (Driver Side) | GCA-J0D54-0R-ZG (Passenger Side)

WIND PROTECTION



1



2



3



4

Yamaha Personal Transportation Vehicle Windshields

Completely redesigned and re-engineered to be the best in the industry. Made from polycarbonate for higher impact resistance, greater tensile, and more flexural strength and UV-resistance. The fold-down windshield has a flexible, industry-first mechanical hinge that has a chemically-bonded weld for superior strength. Press-in rubber latches for the top grip and bottom grip clips provide a more secure, yet quiet fit—and is effortless to store in the folded position. Fits 2017-2023 Drive² PTV and Drive² Adventurer Sport 2+2 models.

- 1 One-piece Clear **JOB-K7200-01-00**
- 2 One-piece Tinted **JOB-K7200-11-00**
- 3 Hinged Clear **JOB-K7200-24-00**
- 4 Hinged Tinted **JOB-K7200-34-00**
- 5 Hinged Clear DR2 Hardcoat **JOB-K7200-50-00** (NOT SHOWN)



UMAX Windshields

Completely redesigned and re-engineered to be the best in the industry. Made from polycarbonate for higher impact resistance, greater tensile and more flexural strength and UV-resistance. The fold-down windshield has a flexible, industry-first mechanical hinge that has a chemically-bonded weld for superior strength. Press-in rubber latches for the top grip and bottom grip clips provide a more secure, yet quiet fit—and is effortless to store in the folded position. Fits all 2019-2023 UMAX Rally models.

- 1 One-piece Clear **JOG-K7200-V0-00** (NOT SHOWN)
- 2 One-piece Tinted **JOG-K7200-T0-00** (NOT SHOWN)
- 3 Hinged Clear **JOG-K7200-S0-00**
- 4 Hinged Tinted **JOG-K7200-R0-00** (NOT SHOWN)



Shown with optional Yamaha Genuine Accessories

Where permitted by closed-community regulations or other local ordinance, the Personal Transportation Vehicle (PTV) shown is suitable for use on private/public roads with a maximum posted speed limit of 25 mph. It does not meet federal motor vehicle safety standards applicable to passenger cars.



Drive² Polycarbonate Hard Cab with Wiper by DFK

A must-have for any golf pro or Marshal car in your fleet. Perfect for running around the farm. Or if those aren't your thing, essential for personal security at the apartment complex, Ranger at the RV park, parking attendant at your college, or getting across your lot at the dealership. Features an industry-leading laminated safety glass front windshield with automotive windshield wiper and motor. 100% bolt-on wiper motor and truly plug-and-play wire harness make this the ultimate all-weather cab system. Safety glass windshield means years of worry-free operation from hazing and scratches, and quiet wiper operation. Features safety glass sliding window in doors for effortless, jam-free operation. Polycarbonate doors and rear panel provide optimal visibility of your surroundings and have a double layer, hardened coating to resist scratches. Completely bolt-on design means no drilling or modifications to your vehicle. All metal components are blasted and primed before wrinkle-textured power-coating is applied. 180° door opening for easy entry and exit. Included are gas-assist struts to make opening the doors a breeze. Doors feature a lockable-keyed two position safety lock.

VDF-DFKCB-75-00



Classic Accessories Easy-On Storage Cover

Storage cover features rear access zipper for easy entry and installation. Rear air vents incorporated in cover to reduce wind lofting and inside moisture. Helps protect golf cars from harsh elements such as sun, weather, and dirt. Includes integrated stuff sack. Tough fabric treated for maximum water resistance and repellency. Elasticized cord in bottom hem for a custom fit. Weather protected fabric won't shrink or stretch.

Universal fit for most golf cars.

GCA-74442-00-00

GCA-72402-00-00



UMAX Hard Cab Enclosure

It's 40 degrees out, the sun is just coming up over the trees and there's plenty of work to be done. With our hard cab system, you are sure to be comfortable, despite the elements. This polycarbonate cab system offers the perfect balance of visibility, quality, and comfort to your UMAX. Fits 2019-2023 UMAX One EFI, UMAX Two AC, and UMAX Two EFI.

Cab enclosure consists of 4 components. All sold separately. Requires all 4 components:

- 1. UMAX WINDSHIELD**
 Windshield, 1-Piece Clear **JOG-K7200-V0-00**
 Windshield, Hinged Clear..... **JOG-K7200-S0-00**
 Windshield, 1-Piece Tinted **JOG-K7200-T0-00**
 Windshield, Hinged Tinted **JOG-K7200-R0-00**
- 2. POLYCARBONATE REAR PANEL**
 Fits 2019-2023 UMAX One EFI, UMAX Two AC, UMAX Two EFI
JOG-K750A-V0-00
- 3. SUNTOP KIT**
JOG-K84A0-V0-00
- 4. HARD CAB ENCLOSURE**
 Fits 2019-2023 UMAX One EFI, UMAX Two AC, and UMAX Two EFI
JOG-K81C0-V0-00



DFK UMAX Hard Cab Enclosure

The UMAX DFK Hard Cab promises the best in durable, reliable protection. Designed to withstand harsh weather elements, this fully-sealed cab is outfitted with laminated glass, sliding windows, 360° visibility and windshield wipers.

Fits 2019-2023 UMAX Two AC, UMAX Two EFI, Rally Two EFI, and Rally Two AC.

VDF-DFKCB-74-00



Drive² Three-Sided Enclosure

This three-sided taupe enclosure perfectly complements the Club Pro Products® Cabana Golf Bag. Install in as little as five minutes with a patented extrusion system. The back panel allows access to the sweater basket. The cover disappears into a zippered sleeve when not in use. Fits all 2017-2023 Drive² models with factory ClimaGuard™ Sun Top.

- Black **GCA-J0A63-00-BK**
- Taupe **GCA-J0A63-00-00**



Drive² Three-Sided Enclosures

Have a precisely engineered, custom-fitted sun top to keep cool and comfortable while cruising. With a mildew-/UV-/mold-resistant over-the-top, trackless design, installation is quick and easy so you can seamlessly move it from car to car without hassle. Fits all 2017-2023 Drive² models with factory ClimaGuard™ Sun Top.

- Fabric - Taupe..... **GCA-J0A65-00-SD**
- Vinyl - White..... **GCA-J0A65-00-00**
- Acrylic - Linen..... **GCA-J0A65-00-LN**

Others simply follow industry standards.
WE PREFER TO SET THEM.

In 1967, after testing hundreds of lubrication combinations, Leo Lake developed a blend of oil that became the iconic Yamalube brand the world knows today.

To date, Yamalube remains the only oil built around the stringent demands, operating characteristics, and applications of not only Yamaha engines, but all powersport engines. With over 50 years of success, we still strive to make the best even better.



Yamalube® UMAX Tune-Up Kit

Give your UMAX the care only the most rugged PTV car on the market deserves: Yamalube (an oil kit specifically crafted to support the UMAX's performance, power, and versatility). Fits all 2019-2023 UMAX EFI models.

- CONTAINS:
- Yamalube 10W-30 Mineral Oil (37.2 oz.)
 - Genuine Yamaha Air Filter (QTY. 1)
 - Genuine Yamaha Pre-Air Filter (QTY. 1)
 - NGK® Spark Plug (QTY. 1)
 - Drain Plug Gasket (QTY. 1)

LUB-GCUMX-MT-KT (QTY. 4*)

QUALITY CARE PRODUCTS



Yamalube® Drive² Tune-up Kit

Peak performance in a kit is what you'll be giving your Drive² with the Yamalube Drive² Tune-up Kit. Keep your Yamaha at its best, longer. Fits 2016-2023 Drive² EFI models.

- CONTAINS:
- Yamalube 10W-30 Mineral Oil (1 Qts.)
 - Genuine Yamaha Air Filter (QTY. 1)
 - Genuine Yamaha Pre-Air Filter (QTY. 1)
 - Genuine Yamaha Fuel Filter (QTY. 1) (LUB-GCCRB-MT-KT Only)
 - NGK® Spark Plug (QTY. 1)
 - Drain Plug Gasket (QTY. 1)

LUB-GCDR2-MT-KT



Yamalube® Personal Transportation Vehicle Tune-up Kit

Do you think your PTV wants the same oil used in a minivan? Give it the care only the best PTV in the industry deserves: Yamalube.

- CONTAINS:
- Yamalube 10W-30 Mineral Oil (1 Qts.)
 - Genuine Yamaha Air Filter (QTY. 1)
 - Genuine Yamaha Pre-Air Filter (QTY. 1)
 - Genuine Yamaha Fuel Filter (QTY. 1) (LUB-GCCRB-MT-KT Only)
 - NGK® Spark Plug (QTY. 1)
 - Drain Plug Gasket (QTY. 1)

FITS ALL EFI MODELS
LUB-GCEFI-MT-KT (QTY. 4*)

FITS 1996- CARBURETED MODELS
LUB-GCCRB-MT-KT (QTY. 4*)



Yamalube® for Personal Transportation Vehicle

Give your Yamaha PTV the only oil that is specifically formulated to enhance its performance. Fits all Yamaha Personal Transportation Vehicle models.

1-QT. BOTTLE
LUB-10W30-GG-12 (QTY. 12*)

Fuel Med RX

Prevent fuel system corrosion, improve performance, and extend the life of your Yamaha by using Fuel Med RX. Routine use will fight back phase separation, moisture damage, dissolve gum and varnish in your carburetion system—all while extending spark plug life and stabilizing fuel for winterization. Universal fit. This product can be utilized in all gas engines (lawn mowers, weed eaters and garden tillers) not just a Yamaha!

3.2 OZ. BOTTLE (BLENDED)
ACC-FUELM-RX-04 (QTY. 48*)

16 OZ. BOTTLE (CONCENTRATED; CHAMBERED BOTTLE FOR EASY MEASURING)
ACC-FUELM-RX-16 (QTY. 12*)

16 OZ. BOTTLE ENGINEMED RX WITH FUEL MED
ACC-ENGIN-RX-16 (QTY. 12*)

NOTE: Use continuous treat rate if in-season fuel will sit in a tank for more than seven days. The storage treat rate keeps fuel fresh for up to one year.





PERFECT PROTECTION

Yamalube Quality Care Products. Specifically Formulated For Your Personal Transportation Vehicle.



For the Right Protection, the Pros Know Where to Go

Personal Transportation Vehicles work hard all day. You need protection that does too. Make sure your Yamaha is always up for 18 with high-quality Yamalube Quality Care Products.

Better For Your Yamaha

Protect your Yamaha from the wear and tear of nearly continuous use with Yamalube 10W-30 All-purpose Personal Transportation Vehicle oil. It includes high-quality mineral base stocks and provides incredible film strength.

Better Lubrication

At Yamaha, we have stringent lubrication standards for all of our vehicles—and other off-the-shelf oils just aren't up to par. That's why we've created our own. Our factory-approved engine oils include unparalleled mineral base stocks and technologically superior additives, providing excellent protection.

Better Protection

Yamalube Performance All-purpose Personal Transportation Vehicle oil is available in the precise multi-grade viscosity recommended for your four-stroke Yamaha Personal Transportation Vehicle, and meets, or exceeds all factory requirements.

QUALITY CARE PRODUCTS

1



YamaClean® Pro-Wash Spray

YamaClean Pro-Wash Spray is a biodegradable vehicle wash that removes grime and soil. It rinses clean and is the most effective way to remove grime, grease, and bugs from most surfaces so to always keep your Yamaha vehicle looking new.

32 OZ. BOTTLE
ACC-YAMAC-PW-SP (QTY. 12*)
1 GAL. BOTTLE
ACC-YAMAC-PW-GL (QTY. 4*)

2



YamaCoat™ Plastic Coating

A high-quality plastic coating that helps maintain the color and surface-finish of plastic for that elusive factory-finish look. The unique comfort tip gives an even spray on components to be treated. Once applied, simply wipe dry or leave wet to help inhibit adhesion of mud and dirt for easy cleanup. Ideal for use on Personal Transportation Vehicles, motocross and off-road motorcycles, ATVs, Side-by-Sides, and any other vehicles where plastic components are used.

10 OZ. CAN
ACC-YAMAC-OA-TC (QTY. 12*)

3



Spray Polish and Instant Detailer

This quick detailer will restore a lustrous shine to paint, chrome, glass, and smooth plastics like visors, windshields, and gauges. This polish gives textured plastics, rubber, and vinyl a beautiful satin finish. Anti-static properties repel dust and dirt to keep that shine.

14 OZ. CAN
ACC-SPRAY-PL-SH (QTY. 12*)

4



Yamashield™

Creates a non-conductive shield on surfaces that are exposed to the elements and provides extreme rust and corrosion protection, preserving metal components and electrical connections from moisture.

12 OZ. CAN
ACC-YAMSH-LD-00 (QTY. 12*)

5



Yamalube Electric Motor Spline Grease

Specifically designed to lubricate the splines of golf car electric motors where high temperature, high load, and extreme pressure conditions exist. While other greases can simply melt and run off, resulting in premature wear and damage, Yamalube's high-moly, silicone-based grease formula provides the critical protection this application requires.

ACC-GCSPL-GS-03

6



Yamalube Tune-Up Kit- Golf UMAX

Do you think your UMAX wants the same oil used in a minivan? Give it the care only the most rugged utility car on the market deserves: Yamalube.

CONTAINS:

- Yamalube 10W-30 Mineral Oil (37.2 oz.)
- Yamaha Genuine Air Filter (Qty. 1)
- Yamaha Genuine Pre-Air Filter (Qty. 1)
- NGK® Spark Plug (Qty. 1)
- Drain Plug Gasket (Qty. 1)

LUB-GCUMX-MT-KT

7



Yamalube Engine Med RX

Provides superior carbon deposit control, cleaning injectors, carburetors, intake valves and ports, and combustion chambers. It also protects fuel system metals from ethanol sulfate salt corrosion. Add it at every fill up to avoid unnecessary engine repairs due to poor quality gas, and to keep your engine clean and running efficiently. The 16-oz. size has a chambered bottle for easy measuring, and the 3.2-oz. size is blended to add to 5 gallons of gas for extra convenience.

ACC-FUELM-RX-04 (QTY. 12*)

DRIVE² POWERTECH LI

DIMENSIONS	
OVERALL LENGTH	93.6 in (238 cm)
OVERALL WIDTH	47.3 in (120 cm)
OVERALL HEIGHT (WITH SUN TOP)	70.2 in (178 cm)
WHEELBASE	64.4 in (164 cm)
FRONT WHEEL TREAD	34.8 in (89 cm)
REAR WHEEL TREAD	38.1 in (97 cm)
MINIMUM GROUND CLEARANCE	4.2 in (107 cm)
CURB WEIGHT (WITH SUN TOP, WINDSHIELD AND BATTERY)	368 kg (811 lb)

GENERAL	
TIRE SIZE	18 x 8.5 - 8 (4-ply rating)
SEATING CAPACITY	Two persons / 4 persons with optional rear seat.
AVAILABLE MODEL COLORS	In-Mold: Glacier, Matte: Titan, Arctic Drift, Metallic: Carbon, Coral Red, Onyx, Peridot
AVAILABLE SEAT & SUN TOP COLOR	Standard: Stone Optional: Black
WARRANTY	Standard 4-year limited vehicle warranty

MOTOR / DRIVE TRAIN / POWER SUPPLY

MOTOR	48-volt AC Motor
OUTPUT RATING	6.7 hp (5.0 kW)
MOTOR CONTROL UNIT	Toyota Industries-built motor controller unit
BATTERIES	Lithium Iron Phosphate
CHARGER	Delta-Q Charger

CHASSIS

FRAME	HybriCore™ Chassis features a robotic welded automotive ladder-style steel frame protected with a multi-step full-immersion phosphate treatment, electro-deposition epoxy-based coating, and an electrostatic applied polyester/urethane powder topcoat
BODY	Mold-in Polypropylene for Glacier color. Custom-formulated thermoplastic olefin painted with a two-part top coat of high-luster automotive-grade polyurethane
STEERING	Self-compensating double reduction helical rack-and-pinion
FRONT SUSPENSION	Tru-Trak II™ fully independent automotive-style strut suspension
REAR SUSPENSION	Fully independent automotive-style strut suspension
BRAKES	Self-adjusting mechanical, rear wheel drum brakes
BUMPERS	Front and rear 5 mph energy-absorbing bumpers

PERFORMANCE

MAX SPEED ADJUSTABLE	15.0 mph (24 km/h)
MINIMUM TURNING RADIUS	9.2 ft (2.8 m)

DRIVE² POWERTECH AC

DIMENSIONS	
OVERALL LENGTH	93.6 in (238 cm)
OVERALL WIDTH	47.3 in (120 cm)
OVERALL HEIGHT (WITH SUN TOP)	70.2 in (178 cm)
WHEELBASE	64.4 in (164 cm)
FRONT WHEEL TREAD	34.8 in (88 cm)
REAR WHEEL TREAD	38.3 in (97 cm)
MINIMUM GROUND CLEARANCE	5.5 in (14 cm)
CURB WEIGHT (WITH SUN TOP AND BATTERY)	482 kg (1063 lb)

GENERAL	
TIRE SIZE	18 x 8.5 - 8 (4-ply rating)
SEATING CAPACITY	Two persons / 4 persons with optional rear seat.
AVAILABLE MODEL COLORS	In-Mold: Glacier, Matte: Titan, Arctic Drift, Metallic: Carbon, Coral Red, Onyx, Peridot
AVAILABLE SEAT & SUN TOP COLOR	Standard: Stone Optional: Black
WARRANTY	Standard 4-year limited vehicle warranty

MOTOR / DRIVE TRAIN / POWER SUPPLY

MOTOR	48-volt AC Motor
OUTPUT RATING	6.7 hp (5.0 kW)
MOTOR CONTROL UNIT	Toyota Industries-built motor controller unit
BATTERIES	Standard: Six 8-volt Motive T875 Optional: Eight 6-volt Trojan T105
CHARGER	Delta-Q Charger

CHASSIS

FRAME	HybriCore™ Chassis features a robotic welded automotive ladder-style steel frame protected with a multi-step full-immersion phosphate treatment, electro-deposition epoxy-based coating, and an electrostatic applied polyester/urethane powder topcoat
BODY	Mold-in Polypropylene for Glacier color. Custom-formulated thermoplastic olefin painted with a two-part top coat of high-luster automotive-grade polyurethane
STEERING	Self-compensating double reduction helical rack-and-pinion
FRONT SUSPENSION	Tru-Trak II™ fully independent automotive-style strut suspension
REAR SUSPENSION	Fully independent automotive-style strut suspension
BRAKES	Self-adjusting mechanical, rear wheel drum brakes
BUMPERS	Front and rear 5 mph energy-absorbing bumpers

PERFORMANCE

MAX SPEED ADJUSTABLE	15.0 mph (24 km/h)
MINIMUM TURNING RADIUS	9.2 ft (2.8 m)

DRIVE² QUIETECH EFI

DIMENSIONS	
OVERALL LENGTH	93.6 in (238 cm)
OVERALL WIDTH	47.3 in (120 cm)
OVERALL HEIGHT (WITH SUN TOP)	70.2 in (178 cm)
WHEELBASE	64.4 in (164 cm)
FRONT WHEEL TREAD	34.8 in (88 cm)
REAR WHEEL TREAD	38.3 in (97 cm)
MINIMUM GROUND CLEARANCE	4.3 in (11 cm)
CURB WEIGHT (WITH SUN TOP, BATTERY, OIL AND GASOLINE)	356 kg (785 lb)

GENERAL	
FUEL TANK CAPACITY	5.8 U.S. gal (22 liters)
TIRE SIZE	205/65 - 10 DOT (4-ply rating)
SEATING CAPACITY	Two persons / 4 persons with optional rear seat.
AVAILABLE MODEL COLORS	In-Mold: Glacier, Matte: Titan, Arctic Drift, Metallic: Carbon, Coral Red, Onyx, Peridot
AVAILABLE SEAT & SUN TOP COLOR	Standard: Stone Optional: Black
WARRANTY	Standard 4-year limited vehicle warranty

ENGINE / DRIVE TRAIN

ENGINE TYPE	Yamaha-built, 357 cc, low-emission single cylinder 60° incline OHV
OIL CAPACITY	1 U.S. quart (1 liter, 1000 cc)
AIR CLEANER	Two-stage, urethane-foam pre-cleaner, and high-capacity pleated paper cartridge
COOLING SYSTEM	Forced air
STARTING SYSTEM	Starter generator with pedal start system
FUEL SYSTEM	EFI - Electronic Fuel Injection

CHASSIS

FRAME	HybriCore™ Chassis features a robotic welded automotive ladder-style steel frame protected with a multi-step full-immersion phosphate treatment, electro-deposition epoxy-based coating, and an electrostatic applied polyester/urethane powder topcoat
BODY	Mold-in Polypropylene for Glacier color. Custom-formulated thermoplastic olefin painted with a two-part top coat of high-luster automotive-grade polyurethane
STEERING	Self-compensating double reduction helical rack-and-pinion
FRONT SUSPENSION	Tru-Trak II™ fully independent automotive-style strut suspension
REAR SUSPENSION	Fully independent automotive-style strut suspension
BRAKES	Self-adjusting mechanical, rear wheel drum brakes
BUMPERS	Front and rear 5 mph energy-absorbing bumpers

PERFORMANCE

MAX SPEED ADJUSTABLE	19.0 mph (31 km/h)
MINIMUM TURNING RADIUS	9.5 ft (2.9 m)

ADVENTURER SPORT 2+2 EFI

DIMENSIONS	
OVERALL LENGTH	108.3 in (275 cm)
OVERALL WIDTH	50.8 in (129 cm)
OVERALL HEIGHT (NO SUN TOP)	50 in (127 cm)
WHEELBASE	64.4 in (164 cm)
FRONT WHEEL TREAD	37.8 in (96 cm)
REAR WHEEL TREAD	39.8 in (101 cm)
MINIMUM GROUND CLEARANCE	6.3 in (16 cm)
DRY WEIGHT (WITH SUN TOP, BATTERY, OIL AND GASOLINE)	441 kg (972 lb)

GENERAL	
FUEL TANK CAPACITY	5.8 U.S. gal (22 liters)
TIRE SIZE	20x10-8 (4-ply rating)
SEATING CAPACITY	Four persons
AVAILABLE MODEL COLORS	In-Mold: Glacier, Matte: Titan, Arctic Drift, Metallic: Carbon, Coral Red, Onyx, Peridot
AVAILABLE SEAT & SUN TOP COLOR	Standard: Stone Optional: Black
WARRANTY	Standard 2-year limited vehicle warranty

ENGINE / DRIVE TRAIN / POWER SUPPLY

ENGINE TYPE	Yamaha-built, 357 cc, low-emission single cylinder 60° incline OHV
LUBRICATION SYSTEM	Splash-style positive oil lubrication
OIL CAPACITY	1 U.S. quart (1 liter, 1000 cc)
AIR CLEANER	Two-stage, urethane-foam pre-cleaner, and high-capacity pleated paper cartridge
COOLING SYSTEM	Forced air
STARTING SYSTEM	Starter generator with pedal start system
FUEL SYSTEM	EFI - Electronic Fuel Injection

CHASSIS

FRAME	HybriCore™ Chassis features a robotic welded automotive ladder-style steel frame protected with a multi-step full-immersion phosphate treatment, electro-deposition epoxy-based coating, and an electrostatic applied polyester/urethane powder topcoat
BODY	Mold-in Polypropylene for Glacier color. Custom-formulated thermoplastic olefin painted with a two-part top coat of high-luster automotive-grade polyurethane
STEERING	Self-compensating double reduction helical rack-and-pinion
FRONT SUSPENSION	Tru-Trak II™ fully independent automotive-style strut suspension
REAR SUSPENSION	Fully independent automotive-style strut suspension
BRAKES	Self-adjusting mechanical, rear wheel drum brakes
BUMPERS	Front and rear 5 mph energy-absorbing bumpers

PERFORMANCE

MAX SPEED ADJUSTABLE	14.9 mph (24 km/h)
MINIMUM TURNING RADIUS	9 ft (3 m)

ADVENTURER SPORT 2+2 AC

DIMENSIONS

OVERALL LENGTH	108.3 in (275 cm)
OVERALL WIDTH	50.8 in (129 cm)
OVERALL HEIGHT (NO SUN TOP)	50 in (127 cm)
WHEELBASE	64.4 in (164 cm)
FRONT WHEEL TREAD	37.8 in (96 cm)
REAR WHEEL TREAD	39.8 in (101 cm)
MINIMUM GROUND CLEARANCE	5.1 in (13 cm)
DRY WEIGHT (WITH SUN TOP)	531 kg (1170 lb)

GENERAL

TIRE SIZE	20x10-8 (4-ply rating)
SEATING CAPACITY	Four persons
AVAILABLE MODEL COLORS	In-Mold: Glacier, Matte: Titan, Arctic Drift, Metallic: Carbon, Coral Red, Onyx, Peridot
AVAILABLE SEAT & SUN TOP COLOR	Standard: Stone Optional: Black
WARRANTY	Standard 2-year limited vehicle warranty

MOTOR / DRIVE TRAIN / POWER SUPPLY

MOTOR	48-volt AC Motor
OUTPUT RATING	6.7 hp (5.0 KW)
MOTOR CONTROL UNIT	NEOS 350 amp AC controller by Toyota Industries Corporation
BATTERIES	Standard: Six 8-volt Motive T875 Optional: Eight 6-volt Trojan T105
CHARGER	Delta-Q Charger

CHASSIS

FRAME	HybriCore™ Chassis features a robotic welded automotive ladder-style steel frame protected with a multi-step full-immersion phosphate treatment, electro-deposition epoxy-based coating, and an electrostatic applied polyester/urethane powder topcoat
BODY	Mold-in Polypropylene for Glacier color. Custom-formulated thermoplastic olefin painted with a two-part top coat of high-luster automotive-grade polyurethane
STEERING	Self-compensating double reduction helical rack-and-pinion
FRONT SUSPENSION	Tru-Trak II™ fully independent automotive-style strut suspension
REAR SUSPENSION	Unit swing arm with DUAL RATE coil springs over hydraulic shock absorbers
BRAKES	Self-adjusting mechanical, rear wheel drum brakes
BUMPERS	Front and rear 5 mph energy-absorbing bumpers

PERFORMANCE

MAX SPEED ADJUSTABLE	14.9 mph (24 km/h)
MINIMUM TURNING RADIUS	9 ft (3 m)

SEE MORE ONLINE!

Scan now to view warranty information.



Shown with optional Yamaha Genuine Accessories

Where permitted by closed-community regulations or other local ordinance, the Personal Transportation Vehicle (PTV) shown is suitable for use on private/public roads with a maximum posted speed limit of 25 mph. It does not meet federal motor vehicle safety standards applicable to passenger cars.

UMAX ONE EFI

OVERALL LENGTH	111.45 in (283.1cm)
OVERALL HEIGHT (NO SUN TOP)	48.54 in (123.3cm)
OVERALL HEIGHT (WITH SUN TOP)	74.02 in (188 cm)
OVERALL WIDTH	49.33 in (125.3cm)
WHEELBASE	66.18 in (168.1cm)
FRONT WHEEL TREAD	39.96 in (101.5cm)
REAR WHEEL TREAD	40.19 in (102.1cm)
MINIMUM GROUND CLEARANCE	4.56 in (11.6cm)
CURB WEIGHT (WITH SUN TOP, BATTERY, OIL AND GASOLINE)	452 kg (997lb)

FUEL TANK CAPACITY	5.2 US GAL (20 LITERS)
TIRE SIZE	20x10-10 4-ply Monitor K389 (front) K500 (rear)
SEATING CAPACITY	Two persons
AVAILABLE MODEL COLORS	Glacier, Coral Red, Bluestone, Carbon, Evergreen
AVAILABLE SEAT COLORS	Black
AVAILABLE SUN TOP COLORS	Black
WARRANTY	Standard 2-year limited vehicle warranty
STANDARD RECEIVER HITCH	2"

ENGINE TYPE	Yamaha-built 402cc, Low Emission Single Cylinder 60deg Incline OHV
LUBRICATION SYSTEM	Splash-style positive oil lubrication
OIL CAPACITY	1.16 U.S. quart (1.1 liter, 1100cc), Yamalube 10W-30
AIR CLEANER	Two-stage, urethane-foam pre-cleaner, and high-capacity pleated paper cartridge
COOLING SYSTEM	Forced air
FUEL SYSTEM	Electronic fuel injection
STARTING SYSTEM	Starter generator with pedal start system
HORSEPOWER	3600 rpm (14.25 hp)

FRAME	HybriCore™ Chassis features a robotic welded automotive ladder-style steel frame protected with a multi-step full-immersion phosphate treatment, electro-deposition epoxy-based coating, and an electrostatic applied polyester/urethane powder topcoat
BODY	Custom-formulated thermoplastic olefin painted with a two-part top coat of high-luster automotive-grade polyurethane
STEERING	Self-compensating double reduction helical rack-and-pinion
FRONT SUSPENSION	Tru-Trak II™ fully independent automotive-style strut suspension
REAR SUSPENSION	Unit swing arm with DUAL RATE coil springs over hydraulic shock absorbers
BRAKES	Self-adjusting mechanical, rear wheel drum brakes
CARGO BED MAX LOAD	300 lb
ROLLING TRAILER MAX WEIGHT	800 lb
MAX TONGUE WEIGHT	100 lb
VEHICLE RATED CAPACITY	800 lb
CARGO BED DIMENSIONS	33.2" L x 45.9" W x 11.9" H

MAX FORWARD SPEED	17.5 mph (28 km/h)
MAX REVERSE SPEED	13.1 mph (21 km/h)
MINIMUM TURNING RADIUS	3.48 m
G.V.W.	1,708 lb

UMAX TWO EFI

OVERALL LENGTH	119.37 in (303.2cm)
OVERALL HEIGHT (NO SUN TOP)	48.54 in (123.3cm)
OVERALL HEIGHT (WITH SUN TOP)	74.02 in (188 cm)
OVERALL WIDTH	49.33 in (125.3cm)
WHEELBASE	77.2 in (196.1cm)
FRONT WHEEL TREAD	40.27 in (102.3cm)
REAR WHEEL TREAD	40.19 in (102.1cm)
MINIMUM GROUND CLEARANCE	4.52 in (11.5cm)
CURB WEIGHT (WITH SUN TOP, BATTERY, OIL AND GASOLINE)	483 kg (1064 lb)

FUEL TANK CAPACITY	5.2 US GAL (20 LITERS)
TIRE SIZE	20x10-10 4-ply Monitor K389 (front) K500 (rear)
SEATING CAPACITY	Two persons
AVAILABLE MODEL COLORS	Glacier, Coral Red, Bluestone, Carbon, Evergreen
AVAILABLE SEAT COLORS	Black
AVAILABLE SUN TOP COLORS	Black
WARRANTY	Standard 2-year limited vehicle warranty

ENGINE TYPE	Yamaha-built 402cc, Low Emission Single Cylinder 60deg Incline OHV
LUBRICATION SYSTEM	Splash-style positive oil lubrication
OIL CAPACITY	1.16 U.S. quart (1.1 liter, 1100cc), Yamalube 10W-30
AIR CLEANER	Two-stage, urethane-foam pre-cleaner, and high-capacity pleated paper cartridge
COOLING SYSTEM	Forced air
FUEL SYSTEM	Electronic fuel injection
STARTING SYSTEM	Starter generator with pedal start system
HORSEPOWER	3600 rpm (14.25 hp)

FRAME	HybriCore™ Chassis features a robotic welded automotive ladder-style steel frame protected with a multi-step full-immersion phosphate treatment, electro-deposition epoxy-based coating, and an electrostatic applied polyester/urethane powder topcoat
BODY	Custom-formulated thermoplastic olefin painted with a two-part top coat of high-luster automotive-grade polyurethane
STEERING	Self-compensating double reduction helical rack-and-pinion
FRONT SUSPENSION	Tru-Trak II™ fully independent automotive-style strut suspension
REAR SUSPENSION	Unit swing arm with DUAL RATE coil springs over hydraulic shock absorbers
BRAKES	Self-adjusting mechanical, front and rear wheel drum brakes
CARGO BED MAX LOAD	800 lb
ROLLING TRAILER MAX WEIGHT	1,200 lb
MAX TONGUE WEIGHT	150 lb
VEHICLE RATED CAPACITY	1,500 lb
CARGO BED DIMENSIONS	41.1" L x 45.9" W x 11.9" H

MAX FORWARD SPEED	17.5 mph (28 km/h)
MAX REVERSE SPEED	13.1 mph (21 km/h)
MINIMUM TURNING RADIUS	3.98 m
G.V.W.	2,533 lb

UMAX TWO AC

OVERALL LENGTH	119.37 in (303.2cm)
OVERALL HEIGHT (NO SUN TOP)	48.54 in (123.3cm)
OVERALL HEIGHT (WITH SUN TOP)	74.02 in (188 cm)
OVERALL WIDTH	49.33 in (125.3cm)
WHEELBASE	77.2 in (196.1cm)
FRONT WHEEL TREAD	40.27 in (102.3cm)
REAR WHEEL TREAD	40.19 in (102.1cm)
MINIMUM GROUND CLEARANCE	4.52 in (11.5cm)
CURB WEIGHT (WITH SUN TOP)	658 kg (1451 lb)

TIRE SIZE	20x10-10 4-ply Monitor K389 (front) K500 (rear)
SEATING CAPACITY	Two persons
AVAILABLE MODEL COLORS	Glacier, Coral Red, Bluestone, Carbon, Evergreen
AVAILABLE SEAT COLORS	Black
AVAILABLE SUN TOP COLORS	Black
WARRANTY	Standard 2-year limited vehicle warranty
STANDARD RECEIVER HITCH	2"

MOTOR	48-volt AC
OUTPUT RATING	6.7 hp (5.0 kW for 60 minutes)
MOTOR CONTROL UNIT	NEOS 350 amp AC controller by Toyota Industries Corporation
BATTERIES	Standard: Six 8-volt Trojan T-105 Batteries

FRAME	HybriCore™ Chassis features a robotic welded automotive ladder-style steel frame protected with a multi-step full-immersion phosphate treatment, electro-deposition epoxy-based coating, and an electrostatic applied polyester/urethane powder topcoat
BODY	Custom-formulated thermoplastic olefin painted with a two-part top coat of high-luster automotive-grade polyurethane
STEERING	Self-compensating double reduction helical rack-and-pinion
FRONT SUSPENSION	Tru-Trak II™ fully independent automotive-style strut suspension
REAR SUSPENSION	Unit swing arm with DUAL RATE coil springs over hydraulic shock absorbers
BRAKES	Self-adjusting mechanical, front and rear wheel drum brakes
CARGO BED MAX LOAD	800 lb
ROLLING TRAILER MAX WEIGHT	1,200 lb
MAX TONGUE WEIGHT	150 lb
VEHICLE RATED CAPACITY	1,500 lb
CARGO BED DIMENSIONS	41.1" L x 45.9" W x 11.9" H

MAX FORWARD SPEED	17.5 mph (28 km/h)
MAX REVERSE SPEED	6.2 mph (10 km/h)
MINIMUM TURNING RADIUS	3.98 m
G.V.W.	2,910 lb

RALLY ONE EFI

OVERALL LENGTH	114.6 in (291.2 cm)
OVERALL HEIGHT (NO SUN TOP)	50.7 in (128.8 cm)
OVERALL HEIGHT (WITH SUN TOP)	74.02 in (188 cm)
OVERALL WIDTH	53.5 in (136 cm)
WHEELBASE	66.3 in (168.3 cm)
FRONT WHEEL TREAD	40.9 in (104 cm)
REAR WHEEL TREAD	41.3 in (104.8 cm)
MINIMUM GROUND CLEARANCE	6 in (15.2 cm)
CURB WEIGHT (WITH SUN TOP, BATTERY, OIL AND GASOLINE)	470 kg (1036 lb)

FUEL TANK CAPACITY	5.2 U.S. gal (20 liters)
TIRE SIZE	20x10-10 4-ply Monitor K389 (front) K500 (rear)
SEATING CAPACITY	Two persons
AVAILABLE MODEL COLORS	Glacier, Coral Red, Bluestone, Carbon, Evergreen
AVAILABLE SEAT & SUN TOP COLOR	Black
WARRANTY	Standard 2-year limited vehicle warranty
STANDARD RECEIVER HITCH	2"

ENGINE TYPE	Yamaha-built, 402 cc, low-emission single cylinder 60° incline OHV
LUBRICATION SYSTEM	Splash-style positive oil lubrication
OIL CAPACITY	1.16 U.S. quart (1.1 liter, 1100 cc), Yamalube 10W-30
AIR CLEANER	Two-stage, urethane-foam pre-cleaner, and high-capacity pleated paper cartridge
COOLING SYSTEM	Forced air
STARTING SYSTEM	Starter generator with pedal start system
FUEL SYSTEM	EFI - Electronic Fuel Injection
HORSEPOWER	3600 rpm (14.25 hp)

FRAME	HybriCore™ Chassis features a robotic welded automotive ladder-style steel frame protected with a multi-step full-immersion phosphate treatment, electro-deposition epoxy-based coating, and an electrostatic applied polyester/urethane powder topcoat
BODY	Custom-formulated thermoplastic olefin painted with a two-part top coat of high-luster automotive-grade polyurethane
STEERING	Self-compensating double reduction helical rack-and-pinion
FRONT SUSPENSION	Tru-Trak II™ fully independent automotive-style strut suspension
REAR SUSPENSION	Unit swing arm with DUAL RATE coil springs over hydraulic shock absorbers
BRAKES	Self-adjusting mechanical, rear wheel drum brakes
CARGO BED MAX LOAD	300 lb
ROLLING TRAILER MAX WEIGHT	800 lb
MAX TONGUE WEIGHT	100 lb
VEHICLE RATED CAPACITY	800 lb
CARGO BED DIMENSIONS	33.2" L X 45.9" W x 11.9" H

MAX FORWARD SPEED	17.5 mph (28 km/h)
MAX REVERSE SPEED	13.1 mph (21km/h)
MINIMUM TURNING RADIUS	3.48 m
G.V.W.	1,708 lb

RALLY TWO EFI

DIMENSIONS

OVERALL LENGTH	122.6 in (311.3 cm)
OVERALL HEIGHT (NO SUN TOP)	50.7 in (128.8 cm)
OVERALL HEIGHT (WITH SUN TOP)	74.02 in (188 cm)
OVERALL WIDTH	53.5 in (136 cm)
WHEELBASE	77.3 in (196.3 cm)
FRONT WHEEL TREAD	41.3 in (104.8 cm)
REAR WHEEL TREAD	41.3 in (104.8 cm)
MINIMUM GROUND CLEARANCE	6 in (15.2 cm)
CURB WEIGHT (WITH SUN TOP, BATTERY, OIL AND GASOLINE)	501 kg (1105 lb)

GENERAL

FUEL TANK CAPACITY	5.2 US GAL (20 LITERS)
TIRE SIZE	23x10.5-12 4-ply Monitor K389 (front) K500 (rear)
SEATING CAPACITY	Two persons
AVAILABLE MODEL COLORS	Glacier, Coral Red, Bluestone, Carbon, Evergreen
AVAILABLE SEAT & SUN TOP COLOR	Black
WARRANTY	Standard 2-year limited vehicle warranty
STANDARD RECEIVER HITCH	2"

ENGINE / DRIVE TRAIN

ENGINE TYPE	Yamaha-built 402 cc, Low Emission Single Cylinder 60deg Incline OHV
LUBRICATION SYSTEM	Splash-style positive oil lubrication
OIL CAPACITY	1.16 U.S. quart (1.1 liter, 1100 cc), Yamalube 10W-30
AIR CLEANER	Two-stage, urethane-foam pre-cleaner, and high-capacity pleated paper cartridge
COOLING SYSTEM	Forced air
FUEL SYSTEM	Electronic fuel injection
STARTING SYSTEM	Starter generator with pedal start system
HORSEPOWER	3600 rpm (14.25 hp)

CHASSIS

FRAME	HybriCore™ Chassis features a robotic welded automotive ladder-style steel frame protected with a multi-step full-immersion phosphate treatment, electro-deposition epoxy-based coating, and an electrostatic applied polyester/urethane powder topcoat
BODY	Custom-formulated thermoplastic olefin painted with a two-part top coat of high-luster automotive-grade polyurethane
STEERING	Self-compensating double reduction helical rack-and-pinion
FRONT SUSPENSION	Tru-Trak II™ fully independent automotive-style strut suspension
REAR SUSPENSION	Unit swing arm with DUAL RATE coil springs over hydraulic shock absorbers
BRAKES	Self-adjusting mechanical, front and rear wheel drum brakes
CARGO BED MAX LOAD	800 lb
ROLLING TRAILER MAX WEIGHT	1,500 lb
MAX TONGUE WEIGHT	150 lb
VEHICLE RATED CAPACITY	1,500 lb
CARGO BED DIMENSIONS	41.1" L x 45.9" W x 11.9" H

PERFORMANCE

MAX FORWARD SPEED	17.5 mph (28 km/h)
MAX REVERSE SPEED	13.1 mph (21km/h)
MINIMUM TURNING RADIUS	3.98 m
G.V.W.	2,533 lb

RALLY TWO AC

DIMENSIONS

OVERALL LENGTH	122.6 in (311.3 cm)
OVERALL HEIGHT (NO SUN TOP)	50.7 in (128.8 cm)
OVERALL HEIGHT (WITH SUN TOP)	74.02 in (188 cm)
OVERALL WIDTH	53.5 in (136 cm)
WHEELBASE	77.3 in (196.3 cm)
FRONT WHEEL TREAD	41.3 in (104.8 cm)
REAR WHEEL TREAD	41.3 in (104.8 cm)
MINIMUM GROUND CLEARANCE	6 in (15.2 cm)
CURB WEIGHT (WITH SUN TOP)	676 kg (1490 lb)

GENERAL

TIRE SIZE	23x10.5-12 4-ply Monitor K389 (front) K500 (rear)
SEATING CAPACITY	Two persons
AVAILABLE MODEL COLORS	Glacier, Coral Red, Bluestone, Carbon, Evergreen
AVAILABLE SEAT & SUN TOP COLOR	Black
WARRANTY	Standard 2-year limited vehicle warranty
STANDARD RECEIVER HITCH	2"

ENGINE / DRIVE TRAIN

MOTOR	48-volt AC
OUTPUT RATING	6.7 hp (5.0 kW)
MOTOR CONTROL UNIT	NEOS 350 amp AC controller by Toyota Industries Corporation
BATTERIES	Standard: Eight 6-volt Trojan T-105 Batteries

CHASSIS

FRAME	HybriCore™ Chassis features a robotic welded automotive ladder-style steel frame protected with a multi-step full-immersion phosphate treatment, electro-deposition epoxy-based coating, and an electrostatic applied polyester/urethane powder topcoat
BODY	Custom-formulated thermoplastic olefin painted with a two-part top coat of high-luster automotive-grade polyurethane
STEERING	Self-compensating double reduction helical rack-and-pinion
FRONT SUSPENSION	Tru-Trak II™ fully independent automotive-style strut suspension
REAR SUSPENSION	Unit swing arm with DUAL RATE coil springs over hydraulic shock absorbers
BRAKES	Self-adjusting mechanical, front and rear wheel drum brakes
CARGO BED MAX LOAD	800 lb
ROLLING TRAILER MAX WEIGHT	1,500 lb
MAX TONGUE WEIGHT	150 lb
VEHICLE RATED CAPACITY	1,500 lb
CARGO BED DIMENSIONS	41.1" L x 45.9" W x 11.9" H

PERFORMANCE

MAX FORWARD SPEED	17.5 mph (28 km/h)
MAX REVERSE SPEED	6.2 mph (10 km/h)
MINIMUM TURNING RADIUS	3.98 m
G.V.W.	2,910 lb

RALLY 2+2 EFI

DIMENSIONS

OVERALL LENGTH	134.37 in (341.3 cm)
OVERALL HEIGHT (NO SUN TOP)	57.48 in (146 cm)
OVERALL HEIGHT (WITH SUN TOP)	77.20 in (196.1 cm)
OVERALL WIDTH	53.54 in (136 cm)
WHEELBASE	77.28 in (196.3 cm)
FRONT WHEEL TREAD	41.26 in (104.8 cm)
REAR WHEEL TREAD	41.26 in (104.8 cm)
MINIMUM GROUND CLEARANCE	5.94 in (15.1 cm)
CURB WEIGHT	610 kg (1345 lb)

GENERAL

FUEL TANK CAPACITY	5.2 US GAL (20 LITERS)
TIRE SIZE	23x10.5-12 4-ply Monitor K389 (front) K500 (rear)
SEATING CAPACITY	Four persons
AVAILABLE MODEL COLORS	Glacier, Coral Red, Bluestone, Cyan, Onyx, Carbon Matte: Titan
AVAILABLE SEAT & SUN TOP COLOR	Black
WARRANTY	Standard 2-year limited vehicle warranty

ENGINE / DRIVE TRAIN

ENGINE TYPE	Yamaha-built 402 cc, Low Emission Single Cylinder 60deg Incline OHV
LUBRICATION SYSTEM	Splash-style positive oil lubrication
OIL CAPACITY	1.16 U.S. quart (1.1 liter, 1100 cc), Yamalube 10W-30
AIR CLEANER	Two-stage, urethane-foam pre-cleaner, and high-capacity pleated paper cartridge
COOLING SYSTEM	Forced air
FUEL SYSTEM	Electronic fuel injection
STARTING SYSTEM	Starter generator with pedal start system
HORSEPOWER	3600 rpm (14.25 hp)

CHASSIS

FRAME	HybriCore™ Chassis features a robotic welded automotive ladder-style steel frame protected with a multi-step full-immersion phosphate treatment, electro-deposition epoxy-based coating, and an electrostatic applied polyester/urethane powder topcoat
BODY	Custom-formulated thermoplastic olefin painted with a two-part top coat of high-luster automotive-grade polyurethane
STEERING	Self-compensating double reduction helical rack-and-pinion
FRONT SUSPENSION	Tru-Trak II™ fully independent automotive-style strut suspension
REAR SUSPENSION	Unit swing arm with DUAL RATE coil springs over hydraulic shock absorbers
BRAKES	Mechanical, 4-wheel drum
FLIP-SEAT CARGO BED MAX LOAD	250 lb
MAXIMUM COMBINED LOAD WITH TWO PASSENGERS AND CARGO	400 lb
VEHICLE RATED CAPACITY	1,000 lb

PERFORMANCE

MAX FORWARD SPEED	15 mph (24.1 km/h)
MAX REVERSE SPEED	11.2 mph (18 km/h)
MINIMUM TURNING RADIUS	3.98 m
G.V.W.	2,717 lb

RALLY 2+2 AC

DIMENSIONS

OVERALL LENGTH	134.37 in (341.3 cm)
OVERALL HEIGHT (NO SUN TOP)	57.48 in (146 cm)
OVERALL HEIGHT (WITH SUN TOP)	77.20 in (196.1 cm)
OVERALL WIDTH	53.54 in (136 cm)
WHEELBASE	77.28 in (196.3 cm)
FRONT WHEEL TREAD	41.26 in (104.8 cm)
REAR WHEEL TREAD	41.26 in (104.8 cm)
MINIMUM GROUND CLEARANCE	5.98 in (15.2 cm)
CURB WEIGHT	779 kg (1717 lb)

GENERAL

TIRE SIZE	23x10.5-12 4-ply Monitor K389 (front) K500 (rear)
SEATING CAPACITY	Four persons
AVAILABLE MODEL COLORS	Glacier, Coral Red, Bluestone, Cyan, Onyx, Carbon Matte: Titan
AVAILABLE SEAT & SUN TOP COLOR	Black
WARRANTY	Standard 2-year limited vehicle warranty

ENGINE / DRIVE TRAIN

MOTOR	48-volt AC
OUTPUT RATING	6.7 hp (5.0 kW for 60 minutes)
MOTOR CONTROL UNIT	NEOS 350 amp AC controller by Toyota Industries Corporation
BATTERIES	Standard: Eight 6-volt Trojan T-105 Batteries

CHASSIS

FRAME	HybriCore™ Chassis features a robotic welded automotive ladder-style steel frame protected with a multi-step full-immersion phosphate treatment, electro-deposition epoxy-based coating, and an electrostatic applied polyester/urethane powder topcoat
BODY	Custom-formulated thermoplastic olefin painted with a two-part top coat of high-luster automotive-grade polyurethane
STEERING	Self-compensating double reduction helical rack-and-pinion
FRONT SUSPENSION	Tru-Trak II™ fully independent automotive-style strut suspension
REAR SUSPENSION	Unit swing arm with DUAL RATE coil springs over hydraulic shock absorbers
BRAKES	Mechanical, 4-wheel drum
CARGO BED MAX LOAD	250 lb
ROLLING TRAILER MAX WEIGHT	1,200 lb
MAX TONGUE WEIGHT	400 lb
VEHICLE RATED CAPACITY	1,000 lb
CARGO BED DIMENSIONS	41.1" L x 45.9" W x 11.9" H

PERFORMANCE

MAX FORWARD SPEED	15 mph (24.1 km/h)
MAX REVERSE SPEED	6.2 mph (10 km/h)
MINIMUM TURNING RADIUS	3.98 m
G.V.W.	2,345 lb



Shown with optional Yamaha Genuine Accessories

Where permitted by closed-community regulations or other local ordinance, the Personal Transportation Vehicle (PTV) shown is suitable for use on private/public roads with a maximum posted speed limit of 25 mph. It does not meet federal motor vehicle safety standards applicable to passenger cars.



1270 Chastain Road NW
Kennesaw, Georgia 30144
1.866.747.4027 | YamahaGolfCar.com



This document contains many of the valuable trademarks and service marks owned and used by Yamaha throughout the world. The document may also contain references to other company, brand, and product names that may be the trademarks/service marks of their respective owners. Unless noted otherwise, these company, brand, and product names are used herein for identification purposes only, and reference to any names, marks, products, or services of third parties do not constitute or imply endorsement, sponsorship, or recommendation of the third party or the product or services. Products and specifications are subject to change without notice.