

GOLF UTILITY CARS



Shown with optional Yamaha Genuine Accessories.



60 + YEARS

YAMAHA MOTOR CORPORATION

With Yamaha, every challenge is an opportunity for adventure with our rich pedigree of motor vehicles, including snowmobiles, scooters, ATVs, personal watercraft vehicles and so much more.



BOATS



MARINE ENGINES

GENERATORS



RECREATIONAL VEHICLES

MOTORCYCLES



WAVERUNNERS®

ALL-TERRAIN VEHICLES



SNOWMOBILES

INTELLIGENT MACHINERY



POWER ASSIST BICYCLES

REMOTELY PILOTED HELICOPTERS



UMAX® OVERVIEW	4 - 7	UMAX® BISTRO	12 - 13	PARTS AND ACCESSORIES	22 - 45
UMAX® ONE + TWO	8 - 9	UMAX® RANGE PICKER	14 - 15	SPECIFICATIONS	46 - 51
UMAX® RALLY	10 - 11	UMAX® RALLY ²⁺²	18 - 21		

Shown with optional Yamaha Genuine Accessories.

ALL THE POWER OF YAMAHA IN ONE CAR



FEATURES	UMAX ONE	UMAX TWO	UMAX RALLY
Power Source	✔ EFI	✔ EFI and AC	✔ EFI and AC
Headlights & Taillights	✔ Standard	✔ Standard	✔ Standard
Dump Bed/Storage Capacity	✔ 10.4 cu. ft.	✔ 12.9 cu. ft.	✔ 10.4 cu. ft.
Brush Guard	○ Optional	○ Optional	✔ Standard
Horsepower	✔ 14.25	✔ 14.25	✔ 14.25



HARDWORKING FEATURES YIELD EFFICIENT RESULTS, DAY AFTER DAY

With five color options, four-wheel brakes, luxurious bucket seats, an under-hood storage compartment and large 20" tires, all with the quietness of a golf car, you can see the difference when power, performance, versatility and comfort matter.



SEE MORE ONLINE!

Scan now to watch all the UMAX features in action.



MAXIMIZE YOUR EFFORTS WITH A UMAX® DUMP BED

Featuring an effortless dump bed lock, you can easily unlock the bed for quick unloading. Your maintenance team will also enjoy more volume than ever before with a capacity of 10.4 cubic feet and a max load of 300 lbs in our UMAX One and 12.9 cubic feet and a max load of 800 lbs in our UMAX Two.



EASY ACCESS ENGINE COMPARTMENT

There's no need to remove the dump bed.



CONVENIENT SIDE-FILL GAS TANK

Makes for a quick, efficient fill-up.



UNDER-HOOD STORAGE COMPARTMENT

Sizable storage area designed for convenience.



INNOVATIVE TOP

Keep weather protection a priority with this advanced top layer.



EASY ONE-HAND TAILGATE RELEASE

Swiftly open and close the tailgate.



AUTOMOTIVE-STYLE DASH

Completely redesigned for today's professional.



LUXURIOUS BUCKET SEATS

Derived from our award-winning Viking® Side-by-Side, you can enjoy a comfortable ride with support that will last your entire work day.

Metallic	Coral Red
Metallic	Bluestone
Metallic	Evergreen
Metallic	Carbon
	Glacier

AVAILABLE COLORS

GET THE JOB DONE WITH PREMIUM POWER AND TORQUE

Our UMAX® lineup was expertly designed to get the job done, however big or small. Build your ideal vehicle using our robust range of custom options to ensure you get the most out of your work day.

WITH THE DFK UMAX
HARD CAB ENCLOSURE
ADD-ON, RIDERS WILL
ENJOY THE CONVENIENCE
AND PROTECTION FROM
THE ELEMENTS WITH
EASY-OPEN SIDE DOORS.



KEEP TOOLS AT-THE-READY WITH OUR FUSIONFIT ACCESSORY SYSTEM



**UMAX
ONE**
AVAILABLE IN GAS

**UMAX
TWO**
AVAILABLE IN GAS
AND ELECTRIC

ALL THE POWER OF YAMAHA IN ONE CAR

The new UMAX Rally™ features a lifted suspension, 23" tires wrapped around 12" V-window wheels and comes complete with a Yamaha Genuine front brush guard and fender flares. Whether it's for a farm, construction site, warehouse, or campus, the UMAX Rally goes where no other light utility vehicle can, making it yet another reason why Yamaha is The Easy Choice.™

LARGE 23"
ALL-TERRAIN TIRES
THAT ARE READY FOR
ANY RUGGED GOLF
COURSE TERRAIN.



EQUIPPED WITH A YAMAHA GENUINE BRUSH GUARD



6 INCH
INCREASED
GROUND CLEARANCE



DRIVE PROFITS WITH A COMPLETELY MOBILE SALES VESSEL

Servicing your customers is now easier than ever with our fully redesigned UMAX® Bistro. Featuring a four-lid ice chest, a sliding snack tray, and an optional coffee cambro, your guests will have easy access to the refreshments they need, any time.



STANDARD BISTRO

Our Standard UMAX® Bistro is designed to be the ultimate solution for convenience. Packed with features that do all of the work, from the sliding snack tray and the four-lid ice chest, the UMAX® Bistro ensures your refreshment offerings will stay organized and always stored at the perfect temperature. A true extension of your clubhouse, the UMAX® Bistro is just another way to up your profits while keeping your players satisfied.



ADDITIONAL REAR SHELF

Easily prepare drinks with the newly added rear shelf.



SLIDING SNACK TRAY

Specially designed space in your cooler for snacks that need to stay dry and chilled.



FOUR-LID ICE CHEST

With four separate coolers with stay-open hinges, you won't have to sacrifice counter space.



OPTIONAL POTABLE ICE CHEST WITH ICE SCOOP

Keep fresh ice on hand for when your guests need to cool down.



OPTIONAL COFFEE CAMBRO

Keep up to 2.5 gallons of beverage perfectly hot or cold for your guests.



OPTIONAL FRONT STRUT-MOUNTED CUP DISPENSER

Accommodates most conventional 6-10 oz. cups.



LOCKABLE AND REMOVABLE CASH DRAWER

Seamlessly integrated into the display cabinet, our solid steel cash drawer can be locked or easily removed.



MENU BOARDS

Two removable whiteboard menu boards to display your specials.



EASY ACCESS DISPLAY CASE

Slanted shelves to perfectly display a variety of snacks and merchandise of your choice.

IT WILL BEAR THE BRUNT OF YOUR HARD DAY'S WORK

Outfitted with a strong diamond-webbed steel cage and an impact-resistant front windshield, discover the same Range Picker you already know and love—but this time, with an upgraded 402cc engine for premium torque and power.

WINDSHIELD DESIGNED WITH HIGHER IMPACT-RESISTANCE, GREATER TENSILE AND FLEXURAL STRENGTH AND MORE UV-RESISTANCE THAN EVER.



DURABLE, HIGH-QUALITY RANGE CAGE HELPS TO ENSURE SAFETY.



402
CC ENGINE
FOR TOUGH JOBS.



BUILD YOUR CUSTOM UMAX® WITH VIBRANT COLOR OPTIONS



BLUESTONE
Metallic



EVERGREEN
Metallic



CORAL RED
Metallic



CARBON
Metallic



GLACIER

A COMFORTABLE RIDE EQUIPPED FOR ANY JOB

The Saturday itinerary is set: some yard work in the morning, your favorite pizza spot for lunch with friends and then some hardware store errands* before calling it a day. With comfortable convertible seating, plenty of storage and an edgy design that matches your style, the UMAX Rally²⁺² not only fits your job, but it also fits your life.

Metallic	Onyx
	Glacier
Matte	Titan
Metallic	Coral Red
	Cyan
Metallic	Bluestone
Metallic	Carbon

AVAILABLE COLORS



TACKLE ANY JOB WITH

**23 INCH
TIRES**



Shown with optional Yamaha Genuine Accessories.

Where permitted by closed-community regulations or other local ordinance, the Personal Transportation Vehicle (PTV) shown is suitable for use on private/public roads with a maximum posted speed limit of 25 mph. It does not meet federal motor vehicle safety standards applicable to passenger cars.

REFRESH YOUR PTV WITH BOLD COLOR OPTIONS



ONYX
Metallic



GLACIER



TITAN
Matte



CORAL RED
Metallic



CYAN



BLUESTONE
Metallic



CARBON
Metallic





**DON'T EXPECT IT.
DEMAND IT!®**

All Yamaha Genuine Parts and Accessories have a three-year limited warranty, unless otherwise specified.

PARTS AND ACCESSORIES

FUSIONFIT™

Yamaha's exclusive FusionFit™ Bed Attachment Kit is the base that will keep your rakes, shovels, edgers, trimmers and other long-handled tools always at-the-ready; our accessory designers and engineers worked with our teams to create precise integrations that guarantee the unique fitment your Yamaha deserves.

Using CAD modeling, FusionFit features meticulous mounting points per unit per accessory that ensures the most accurate installation system possible. FusionFit™ allows for the tightest tolerances that are unmatched and impossible to replicate with aftermarket products.

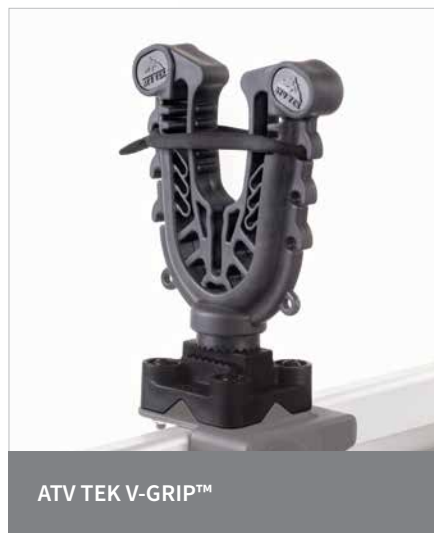


UMAX FusionFit™ Bed Attachment Kit

Our FusionFit™ Bed Attachment Kit will help keep your rakes, shovels, guns, bows and other long-handled tools always at-the-ready. Yamaha's FusionFit™ accessory system provides a tool-less design that allows you to "click and go" with only a quarter turn. An integrated padlock slot gives you the option to easily secure your cargo and go. Fits 2019-2020 UMAX One/Two, UMAX One/Two Rally, UMAX Range Picker and UMAX One/Two with Hard Cab models. Sold in pairs.

J0G-F34A0-V0-00

NOTE: Requires use of the separately sold ATV TEK V-GRIP™ or ATV TEK FLEXGRIP or ATV TEK Elite Series Cam Lock Grip. (Both are available in singles and doubles). Visit ShopYamaha.com to see all options and pricing.



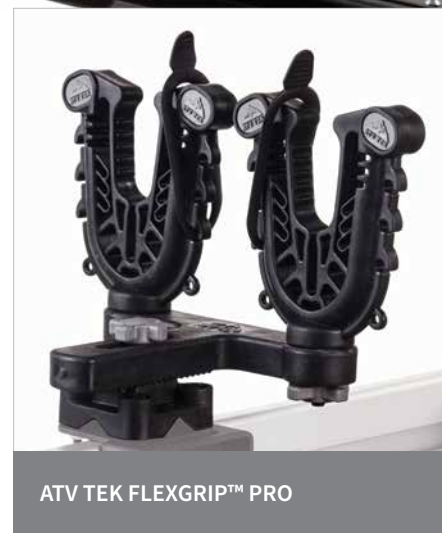
ATV TEK V-GRIP™

The ATV TEK V-GRIP™ offers a true custom fit for whatever tool you find yourself needing to carry. With effortless installation, unmatched versatility and a rock solid mounting base, the V-GRIP design isolates recoil and vibration ensuring your tools stay where you put them. Single kit includes (2) grips, (2) mounting bases, (2) rubber snubbers and all necessary hardware. Fits with UMAX FusionFit bed attachment (Double kits contain (2) Single kits in addition to the sliding "T"-Bracket for ultimate adjustability).

V-GRIP SINGLE
ABA-VFG10-00-00

V-GRIP DOUBLE
ABA-VFG20-00-00

NOTE: Requires a UMAX FusionFit Bed Attachment Kit.



ATV TEK FLEXGRIP™ PRO

The ATV TEK FLEXGRIP™ PRO provides an additional 16" of side-to-side (8" per side), horizontal adjustment and offers a true, custom fit with increasing rigidity for whatever tool you find yourself needing to carry. Finger-adjustable knobs allow for quick, tool-free adjustments on the fly. Single kit includes (2) grips, (2) mounting bases, (2) rubber snubbers and all necessary hardware. Fits with UMAX FusionFit Bed Attachment. (Double kits contain (2) Single kits in addition to the sliding "T"-Bracket for ultimate adjustability).

FLEXGRIP PRO SINGLE
ABA-FFG10-00-00

FLEXGRIP PRO DOUBLE
ABA-FFG20-00-00



ATV TEK Elite Cam Lock Grip

The ATV TEK V-GRIP offers the most versatility in one multi-use V-Grip. A truly custom fit for your handled tools, soft gun case, bow, ice auger, or any other item. Highly adjustable to ensure a perfect, secure fit. Largest size range accommodates more items with infinite locking positions. Quickly and easily access your gear with the tool-free, ratcheting design. Flip cam lock ensures your gear won't fall out while you're hard at work.

Kit includes (2) Elite Cam Lock Grips, (2) mounting bases and all necessary hardware. Fits with UMAX FusionFit™ Bed Attachment.

ABA-ATVCA-ME-S1

AUDIO



Bluetooth® Audio Controller

Make your sound system just as easy to control in your Yamaha as it is in your family car with our Bluetooth® Audio Controller that allows you to change songs, adjust volume and pause/play. Pairs perfectly with the MA100 Speaker/Amp Package (GCA-MA100-00-00)—sold separately. Universal fit for most golf cars.

SBT-BTVC0-00-14

NOTE: Requires audio source.



Overhead AM/FM Bluetooth® Audio System

Instead of playing music through your cell phone speakers, enjoy your favorite tunes through our Overhead AM/FM Stereo with Bluetooth® that can withstand the harshest conditions, takes up none of your car space and gives you impeccable sound quality. This system is fully weatherproof and features 3.5mm AUX-in and USB charging, new SSV Works® waterproof, marine-grade 6.5" speakers, six preset equalizer options, Bluetooth®, AM/FM tuner with LCD backlit display and internally integrated antenna, integrated hyper-white, six LED dome light. Includes wiring, mounting hardware and step-by-step instructions (simple 2-wire installation). Fits The Drive and Drive² golf cars and all 2019-2023 UMAX utility vehicles with factory Sun Top.

J0G-H81C0-V0-00

NOTE: Easily add aftermarket amplifiers or powered subwoofers through the 4v RCA low-level pre-output.



MA100 Speaker/Amp Package

Kick your sound game up a notch by adding this MA100 Speaker/Amp Package to your Drive². Amplify your favorite songs from basic to banging with this salt and corrosion-resistant system that will keep the entertainment going as you cruise. Universal fit for most golf cars.

GCA-MA100-10-00



EcoXGear® SoundExtreme Sound Bar

With the EcoXGear SoundExtreme Sound Bar, you will enjoy premium sound quality with marine-grade, waterproof speakers. Designed for Bluetooth pairing with smartphones, you can listen to music, podcasts or make phone calls in style.

ACC-ECOXT-R0-26

NOTE: Requires a custom mounting solution and wiring to 12V source.



10" 500-watt Subwoofer by SSV Works

Need more bass in your space? SSV Works Premium Marine Subwoofer started the revolution. They produce great volume and clarity designed for the outdoor environment for the powersport enthusiast.

J0D-H81S0-V0-00



6.5 Speaker Pod Kit by SSV Works

SSV Works' new Premium 6.5" Marine-Grade Weatherproof Speakers will transform the sound of your golf car stereo!

J0D-H81D0-V0-00



Speaker Expansion Harness by SSV Works

Universal fitment for 4-passenger tops.

J0D-H81D0-L0-00



Pair of Speaker Pod Clamps by SSV Works

Optional mounts for the Speaker Pod Kit #J0D-H81D0-V0-00.

- Round Clamps #J0G-H81D0-M0-00. Fits most utility vehicles with 1.5" round supports
- Square Clamps #J0D-H81D0-M0-00. Fits most golf cars with 1.0" square supports

J0D-H81D0-M0-00



COVERS



UMAX Storage Cover

Guard your UMAX from the elements during storage. We teamed up with Classic Accessories® to create the best storage cover tailored to perfectly fit your new UMAX. Fits 2019-2020 UMAX One, UMAX Range Picker, UMAX Two, UMAX One/Two Rally and UMAX One/Two with Hard Cab models.

JOG-F81A0-V0-00

PRO TIP! The Storage Cover is non-branded so you can easily use it across most stock utility vehicles (fits universal 2-passenger utility vehicle size 125" L x 52" W x 68" H).

GOLF



UMAX Ball Picker Mount Kit

Easily connect the ball picker of your choice to the UMAX with this mount kit. Includes bracket (ball pickers shown not included). Works with: Range Mate™ and Range Servant™, Whittek, Deron and Western Ball Pickers. Fits 2019-2023 UMAX One/Two models.

JOG-F28M2-V0-00

NOTE: When added to UMAX models, the model is referred to as the UMAX Range Picker.



UMAX Range Cage

Keep protected while cleaning up the course with our high-quality constructed Range Cage that has the durability and security to ensure safety throughout any job. (Consists of five components. All sold separately. For complete Range Cage assembly, all four components are required.) Fits 2019-2023 UMAX One/Two and UMAX Range Picker.

- JOG-K7200-T0-00** WINDSHIELD ASSEMBLY SOLID (SMOKE)
- JOG-K750A-T0-00** EXPANDED METAL REAR PANEL
- JOG-K81C0-T0-00** RANGE CAGE
- JOG-K84A0-V0-00** SUNTOP KIT
- JOG-K7203-T0-00** FRONT METAL PANEL



UMAX DropIn™ Cooler

With the UMAX DropIn™ Cooler, cold drinks are always conveniently stored and ready to go when and where you need them. Perfect for tournaments, company outings and more, this beverage storage solution provides instant profit gains.

Cooler Lid Opening: 24.75" L x 15.4" W
Internal Volume: 16,748in³ (72 gallons)
Capacity:* 200 lbs total

- 1 UMAX One.....GCA-19HDR-OP-U1**
- 2 UMAX Two.....GCA-19HDR-OP-U2**
- 3 Drain Kit GCA-19UMD-RA-IN**

*Limited by unit's GVWR and payload capacity.

LIGHTING AND ELECTRICAL



USB Charge Socket (Set)

Never be without power again with this corrosion-resistant, water-resistant, marine-grade constructed 12V Accessory Plug and Receptacle Kit. Fits any vehicle with a 12V DC power source. Requires installation. Wiring modifications required. Electric models require 48V Voltage Regulator Accessory Kit, JOJ-H1910-V0-00 (sold separately).

12V ACCESSORY PLUG ONLY

DBY-ACC56-00-85

12V ACCESSORY RECEPTACLE ONLY

ATV-12VPC-00-RC

NOTE: Can be installed from the front using the included mounting plate, or from the rear using the locking ring.



Accessory Mount Clamps

These 1.5" clamps allow you to rigidly mount additional accessories or lighting, like the Bullet Accessory Lights (flood pattern (2HC-H4104-L0-00) and spot pattern (2HC-H4104-V0-00) are sold separately). Sold in pairs. Fits all 2019-2023 UMAX and UMAX Rally models, except the UMAX Bistro models.

2HC-F34A0-V0-00



USB Charge Socket (Set)

Allow players to conveniently charge devices on both sides of the vehicle, a win-win for drivers and passengers. Each USB socket can be easily installed in various locations on the UMAX. Fits all 2019-2023 UMAX and UMAX Rally models.

ELECTRIC CARS

GCA-JOC70-00-00

GAS CARS

GCA-JOA70-00-00

NOTE: Both electric and gas models include necessary fuse and voltage regulator. Uses factory mounts and plug-and-play harness.



Waterproof USB Dual Charge Port

Add the luxury of a Waterproof USB Dual Charge Port to your utility car, boat, ATV, Side-by-Side, motorcycle, or even automobile. The USB charge port uses the same mounting hole and connectors as the DC receptacle, making upgrading to USB a snap. Fits any vehicle with a 12V DC power source. Wiring modifications required. Electric models require 48V Voltage Regulator Accessory Kit, JOJ-H1910-V0-00 (sold separately).

GCA-JW970-00-00



YAMAHA LIGHTS THE WAY

Nothing stays the best unless it evolves. What drives us?
Our unwavering dedication to innovate the best for our customers.

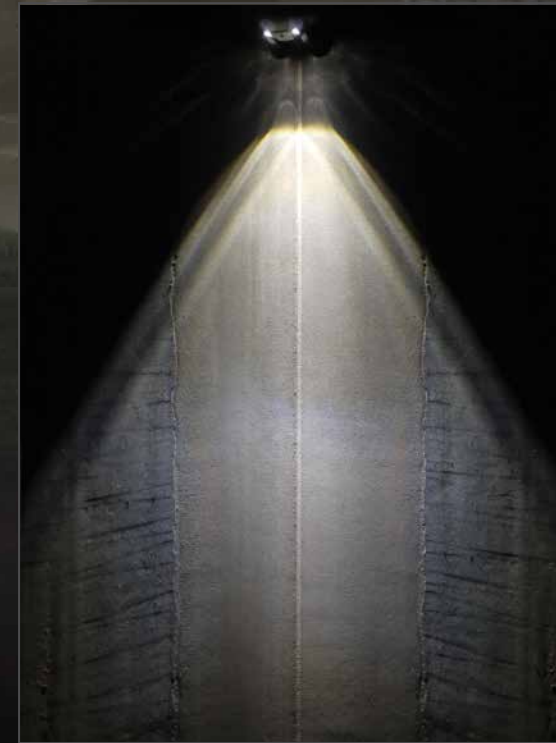
We upgraded our standard so that our golf utility cars now come with LED headlights and an optional LED Backlit Yamaha Logo Light (pg. 35), for a brighter ride.

Now more powerful than ever before, our lights deliver exceptionally less drain on batteries and produce double-to-triple the amount of visibility. With Yamaha, you can enjoy your ride confidently, even after the sun sets.

MAXIMUM VISIBILITY

Minimum Energy Used

YAMAHA STANDARD



Bright, wide light field with long sight distance.

THE UMAX LIGHT SYSTEM



LED FRONT LOGO



LED HEADLIGHTS



LED TURN SIGNALS



LED TAILLIGHTS

THE NEXT GENERATION OF LIGHT KITS

The UMAX Premium Light Upgrade Kit and the UMAX Ultra-Premium Light Upgrade Kit will light your path and keep others informed about your travels. Both Premium and Ultra-Premium Light Upgrade Kits include Yamaha's exclusive new plug-and-play wiring harness that is fully expandable for further upgrades, such as turn signal indicators, side markers and center high-mount stop/tail/turn lights (for future expansion for custom applications).

- Plug-and-play installation
- Harness is weather-tight with sealed connectors
- Turn signal stalk incorporates the headlight off-low-high beam selector knob
- Adds high-beam functionality to factory UMAX LED headlights
- Turn signal handle integrated horn button
- Includes Yamaha's exclusive LED taillights (JOG-H4503-V0-00)
- All Yamaha Upgrade Light Kits include all necessary mounting hardware and detailed instructions with pictures
- Fits all UMAX, UMAX RALLY and UMAX Rally²⁺² models



Shown with solid amber accent light on.

UMAX Premium Light Upgrade Kit

Features a plug-and-play upgradeable premium harness, all new phosphor coated chip-on-board (COB) module that features full-power flashing amber LED front turn signals, the all-new basic amber LED front turn signal chip-on-board (COB) module, LED taillight and brake lights, front and rear LED turn signals, 4-way flasher, horn and side reflex reflectors. Includes Yamaha's exclusive, automotive-style, premium turn signal stalk that incorporates the headlight on/off switch, turn signal handle and integrated horn button.

Fits all UMAX, UMAX RALLY and UMAX Rally²⁺² models.

JOG-H43C0-T0-00



Shown with solid white accent light on.

UMAX Ultra-Premium Light Upgrade Kit

Features everything from the Premium Kit, in addition to the all-new waterproof/dustproof premium white LED accent/amber LED front turn signal chip-on-board (COB) module with clear lens assembly.

Fits all UMAX, UMAX RALLY and UMAX Rally²⁺² models.

JOG-H43C0-V0-00



UMAX Headlight High/Low Switch

Add the option to switch between high- or low-beam front LED headlight with our Headlight High/Low Switch. With easy plug-and-play installation in the front dash panel, it will seamlessly match the factory headlight on/off switch. Fits all 2019-2023 UMAX and UMAX Rally models.

JOG-H25A0-V0-00

NOTE: Will not work with Premium or Ultra-Premium Light Upgrade Kits.



Bullet Accessory Lights

Make visibility easier with these 2.5" accessory lights that make an invaluable addition when your headlights can't reach. Our 10w LEDs shine an extremely bright beam while drawing very little power. Their compact size makes them versatile and allows you to mount them to just almost anywhere on your UMAX. Universal fit for most golf cars, boats, Side-by-Sides and other 12-volt applications.

FLOOD

2HC-H4104-L0-00

SPOT

2HC-H4104-V0-00

NOTE: Accessory Mount Clamps (2HC-F34A0-V0-00) required for installation on Support Sunroof Top or Front Brush Guards, all sold separately.



UMAX Yamaha Backlit Logo

Give your UMAX an intimidatingly gritty edge that'll make a statement wherever you go. Easily connects to factory headlight for plug-and-play wiring. Fits all 2019-2023 UMAX and UMAX Rally models.

JOG-H4104-V0-00

NOTE: Trimming of front grill required for installation.



UMAX Taillights

Increase the visibility of your UMAX when operating at night or in low-light conditions by adding these LED taillights. Fits all 2019-2023 UMAX and UMAX Rally models.

JOG-H4503-V0-00

NOTE: Stop and turn signal functions require the Premium Upgrade Light Kit (JOG-H4503-T0-00) or the Ultra-Premium Upgrade Light Kit (JOG-H4503-S0-00), both sold separately. Taillights are included in both upgrade kits.



UMAX Rear Arm Skid Plate

Tackle rugged golf course terrain with confidence after installing our Rear Arm Skid Plate to help guard against obstructive debris from harming your transaxle—all while perfecting your UMAX vehicle's tough styling. Fits all 2019-2023 UMAX and UMAX Rally models.

JOG-F21A0-V0-00



DEFENDER



DEFENDER JR.

UMAX Fender Flares

Guard yourself and your UMAX from even more debris with our wide, off-road, four-piece fender flare kit designed and engineered to perfectly match your Yamaha in every way.

Fits all 2019-2023 UMAX Two, UMAX Bistro, and UMAX Rally models - DeFender (Wide)

JOG-F15E0-T0-00

Fits all 2019-2023 UMAX and UMAX Rally models-DeFender Jr. (Narrow) (Inset)

JOG-F15E0-V0-00

NOTE: Use of 23" tall tires requires 20mm lift.



UMAX Cargo Bed Mat

Keep your cargo bed in "fresh out of the box" condition with our wear-resistant, durable Cargo Bed Mat. Made from a proprietary 10mm-thick, reinforced, engineered rubber that slows bed wear as it reduces noise and resonance when transporting cargo. Also, the mat's rough-and-tough styling perfectly matches your UMAX vehicle's look while the aggressive lug pattern helps prevent cargo from sliding. Fits 2019-2023 UMAX Rally One EFI and UMAX Rally Two EFI/AC models.

JOG-F7302-V0-00

NOTE: Fits UMAX Two models as is. Cutting of mat required to fit UMAX One EFI models.



UMAX Front Brush Guards

Venture on and off the trail with the added protection of one of our front brush guards that seamlessly integrates with the front profile of your UMAX. Additionally, protect the bold look of the grill, hood and cowl longer. Fits all 2019-2023 UMAX Rally models.

SPORT FRONT BRUSH GUARD

JOG-F85F0-V0-00

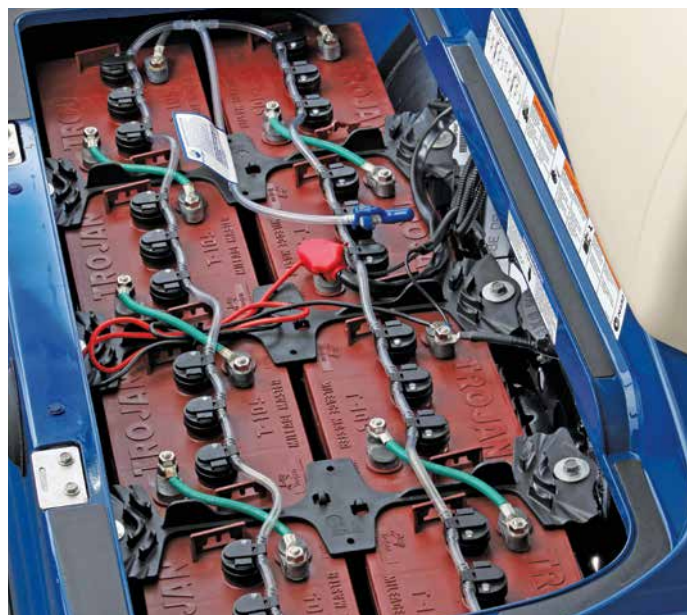
SPORT FRONT BRUSH GUARD WITH HEADLIGHT PROTECTION

JOG-F85F0-R0-00

PRO TIP! For even more protection from brush and debris, add the Rear Tubular Brush Guard (JOG-F85F0-S0-00) and Side Steps (JOG-F11E0-V0-00), sold separately.

NOTE: Will not work with Range Picker Mount.





BFS™ Battery Watering System

Maximize the battery life of your Yamaha by using the BFS™ Battery Watering System that'll make routine maintenance a breeze. Low water levels in lead acid batteries are the primary cause of shortened battery life. Using a watering system saves time and money by filling the batteries simultaneously, providing a safer environment by reducing operators' exposure to battery acid. This accessory also improves battery life and overall performance. Fits all 2019-2023 UMAX AC models with flooded lead acid batteries. (For your correct kit, verify your battery type (MFG/MDL).

SIX 8-VOLT TROJAN T875
GCA-JW286-30-00

EIGHT 6-VOLT TROJAN T105
GCA-JW286-40-00

NOTE: Requires Gravity Tank (GCA-JW286-00-23), sold separately.



Deionizer

Increase your UMAX vehicle's battery life and run time by using our Deionizer system—a cost-effective, effortless way to purify the water used for battery watering. Prevent the build-up of impurities over time with this simple addition to your routine service and it'll make a substantial impact on your battery life. For use with Pro-Fill® by Flow-Rite® Regulated Hose Supply (sold separately).

1 DEIONIZER
JN6-DEION-IZ-ER

2 REPLACEMENT PARTS - 600 REPLACEMENT CARTRIDGE
JN6-DEION-RP-LC



Pro-Fill® Regulated Water Supply Hose

If you plan to use your factory Trojan® HydroLink® watering system to fill multiple golf cars in a quick succession, our Pro-Fill® Regulated Water Supply Hose is the perfect solution. For use with Pro-Fill® by Flow-Rite® or Trojan® HydroLink® watering systems. Will not work with Battery Watering Technologies.

GCA-JW281-00-00



BFS™ Gravity Tank

Use the BFS™ Gravity Tank to add water to your Battery Watering System (GCA-JW286-30-00 or GCA-JW286-40-00)—sold separately—using the power of gravity versus manually pumping the water into the system. For use on BFS™ by Battery Watering Technologies systems.

GCA-JW286-00-23

NOTE: No Deionizer needed with this.



Pro-Fill® Hand Pump

Manually add distilled water to your factory Trojan® HydroLink® watering system with this Pro-Fill® Hand Pump. For use with Pro-Fill® by Flow-Rite® or Trojan® HydroLink® watering systems. Will not work with Battery Watering Technologies.

GCA-JW285-00-00

NOTE: No Deionizer needed with this.



UMAX Cargo Bed Box

You've got a long workday planned. Leave none of your essentials behind with our heavy-duty, durable cargo box that doubles as a non-insulated cooler featuring an integrated drain plug. You'll enjoy easy installation and optimum capacity while matching your UMAX vehicle's uniquely rugged style. Fits 2019-2023 UMAX One Rally EFI and UMAX Two Rally EFI/AC models.

J0G-F83P0-V0-00



UMAX Sun Top Kit

Guard yourself against the sun's glare, hanging brush and other elements with the only sun top designed to completely match your UMAX in style and durability. Fits all 2019-2023 UMAX One/Two (with or without hard cab), UMAX Range Picker, UMAX (Standard) Bistro and UMAX Rally One/Two models.

J0G-K84A0-V0-00

WIND PROTECTION & ENCLOSURES



UMAX Windshields

Completely redesigned and re-engineered to be the best in the industry. Made from polycarbonate for higher impact resistance, greater tensile and more flexural strength and UV-resistance. The fold-down windshield has a flexible, industry-first mechanical hinge that has a chemically-bonded weld for superior strength. Press-in rubber latches for the top grip and bottom grip clips provide a more secure, yet quiet fit—and is effortless to store in the folded position. Fits all 2019-2023 UMAX Rally models.

- 1 One-piece Clear **JOG-K7200-V0-00** (NOT SHOWN)
- 2 One-piece Tinted **JOG-K7200-T0-00** (NOT SHOWN)
- 3 Hinged Clear **JOG-K7200-S0-00**
- 4 Hinged Tinted **JOG-K7200-R0-00** (NOT SHOWN)



UMAX Hard Cab Enclosure

It's 40 degrees out, the sun is just coming up over the trees and there's plenty of work to be done. With our hard cab system, you are sure to be comfortable, despite the elements. This polycarbonate cab system offers the perfect balance of visibility, quality and comfort to your UMAX. Fits 2019-2023 UMAX One EFI, UMAX Two AC and UMAX Two EFI.

Cab enclosure consists of 4 components. All sold separately. Requires all 4 components:

1. UMAX Windshield Options

- One-piece Clear **JOG-K7200-V0-00**
- One-piece Tinted **JOG-K7200-T0-00**
- Hinged Clear **JOG-K7200-S0-00**
- Hinged Tinted **JOG-K7200-R0-00**

2. POLYCARBONATE REAR PANEL

Fits 2019-2023 UMAX One EFI, UMAX Two AC, UMAX Two EFI
JOG-K750A-V0-00

3. SUNTOP KIT

JOG-K84A0-V0-00

4. HARD CAB ENCLOSURE

2019-2023 UMAX One EFI, UMAX Two AC and UMAX Two EFI
JOG-K81C0-V0-00



DFK UMAX Hard Cab Enclosure

The UMAX DFK Hard Cab promises the best in durable, reliable protection. Designed to withstand harsh weather elements, this fully-sealed cab is outfitted with laminated glass, sliding windows, 360° visibility and windshield wipers. Fits 2019-2023 UMAX Two AC, UMAX Two EFI, UMAX Two Rally EFI and UMAX Two Rally AC.

VDF-DFKCB-74-00

WHEELS AND TIRES



Kenda UMAX 6 PLY UPG 10x7 V-Window

High style meets high functionality in the Kenda UMAX 6 PLY UPG 10x7 V-Window tires. With a handsome design fused with the ability to scale any terrain, this tire is one that will leave onlookers talking. Fits all UMAX One/Two models.

JOG-F510M-B0-SV



12" Motohammer Battle Wheel

Scale any terrain with the 12" Motohammer Battle Wheel. Built with abundant treads and a sharp silhouette, this tire is one your riders can always rely on. Fits all UMAX Rally and UMAX Rally²⁺² models.

VDF-12RLY-27-27

YAMALUBE®

Others simply follow industry standards.
WE PREFER TO SET THEM.

In 1967, after testing hundreds of lubrication combinations, Leo Lake developed a blend that became the iconic Yamalube® brand the world knows today.

To date, Yamalube® remains the only oil built around the stringent demands, operating characteristics and applications of not only Yamaha engines, but all powersport engines. With over 50 years of success, we still strive to make the best even better.

QUALITY CARE PRODUCTS



Yamalube® UMAX Tune-Up Kit

Give your UMAX the care only the most rugged utility car on the market deserves: Yamalube® (an oil kit specifically crafted to support the UMAX vehicle's performance, power and versatility).

Fits all 2023 UMAX EFI models.

CONTAINS:

- Yamalube® 10W-30 Mineral Oil (37.2 oz.)
- Genuine Yamaha Air Filter (QTY. 1)
- Genuine Yamaha Pre-Air Filter (QTY. 1)
- NGK® Spark Plug (QTY. 1)
- Drain Plug Gasket (QTY. 1)

LUB-GCUMX-MT-KT



Fuel Med RX

Prevent fuel system corrosion, improve performance, and extend the life of your Yamaha by using Fuel Med RX. Routine use will fight back phase separation, moisture damage, dissolve gum and varnish in your carburetion system—all while extending spark plug life and stabilizing fuel for winterization. Universal fit. This product can be utilized in all gas engines (lawn mowers, weed eaters, garden tillers) not just a Yamaha!

3.2 OZ. BOTTLE (BLENDED)

ACC-FUELM-RX-04 (QTY. 48*)

16 OZ. BOTTLE (CONCENTRATED;
CHAMBERED BOTTLE FOR EASY MEASURING)

ACC-FUELM-RX-16 (QTY. 12*)

NOTE: Use continuous treat rate if in-season fuel will sit in a tank for more than seven days. The storage treat rate keeps fuel fresh for up to one year.



Yamalube Engine Med RX

Provides superior carbon deposit control, cleaning injectors, carburetors, intake valves and ports, and combustion chambers. It also protects fuel system metals from ethanol sulfate salt corrosion. Add it at every fill up to avoid unnecessary engine repairs due to poor quality gas, and to keep your engine clean and running efficiently. The 16-oz. size has a chambered bottle for easy measuring, and the 3.2-oz. size is blended to add to 5 gallons of gas for extra convenience.

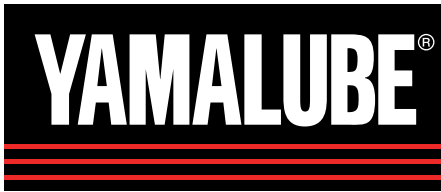
ACC-ENGIN-RX-16



Yamalube Electric Motor Spline Grease

Specifically designed to lubricate the splines of golf car electric motors where high temperature, high load, and extreme pressure conditions exist. While other greases can simply melt and run off, resulting in premature wear and damage, Yamalube's high-moly, silicone-based grease formula provides the critical protection this application requires.

ACC-GCSPL-GS-03



PERFECT PROTECTION

Yamalube® Quality Care Products.
Specifically Formulated For Your Golf Utility Cars.



For the Right Protection, the Pros Know Where to Go

UMAX vehicle's work hard all day. You need protection that does too. Make sure your Yamaha is always up for the task with high-quality Yamalube® Quality Care Products.

Better For Your Yamaha

Protect your Yamaha from the wear and tear of nearly continuous use with Yamalube® 10W-30 All-purpose Golf Car oil. It includes high-quality mineral base stocks and provides incredible film strength.

Better Lubrication

At Yamaha, we have stringent lubrication standards for all of our vehicles—and other off-the-shelf oils just aren't up to par. That's why we created our own. Our factory-approved engine oils include unparalleled mineral base stocks and technologically superior additives, providing excellent protection that matches your engine's demand.

Better Protection

Yamalube® Performance All-purpose Golf Car oil is available in the precise multi-grade viscosity recommended for your four-stroke Yamaha and meets or exceeds all industry standards.

QUALITY CARE PRODUCTS



1

YamaClean® Pro-Wash Spray

YamaClean® Pro-Wash Spray is a biodegradable vehicle wash that removes grime and soil. It rinses clean and is the most effective way to remove grime, grease and bugs from most surfaces so to always keep your Yamaha looking new.

32 OZ. BOTTLE
ACC-YAMAC-PW-SP (QTY. 12*)
1 GAL. BOTTLE
ACC-YAMAC-PW-GL (QTY. 4*)



2

YamaCoat™ Plastic Coating

A high-quality plastic coating that helps maintain the color and surface-finish of plastic for that elusive factory-finish look. The unique comfort tip gives an even spray on components to be treated. Once applied, simply wipe dry or leave wet to help inhibit adhesion of mud and dirt for easy cleanup. Ideal for use on golf cars, motocross and off-road motorcycles, ATVs, Side-by-Sides and any other vehicles where plastic components are used.

10 OZ. CAN
ACC-YAMAC-OA-TC (QTY. 12*)



3

Spray Polish and Instant Detailer

This quick detailer will restore a lustrous shine to paint, chrome, glass and smooth plastics like visors, windshields and gauges. This polish gives textured plastics, rubber and vinyl a beautiful satin finish. Anti-static properties repel dust and dirt to keep that shine.

14 OZ. CAN
ACC-SPRAY-PL-SH (QTY. 12*)



4

Yamashield™

Creates a non-conductive shield on surfaces that are exposed to the elements and provides extreme rust and corrosion protection, preserving metal components and electrical connections from moisture.

12 OZ. CAN
ACC-YAMSH-LD-00 (QTY. 12*)

UMAX ONE EFI

DIMENSIONS

OVERALL LENGTH	111.45 in (283.1cm)
OVERALL HEIGHT (NO SUN TOP)	48.54 in (123.3cm)
OVERALL HEIGHT (WITH SUN TOP)	74.02 in (188 cm)
OVERALL WIDTH	49.33 in (125.3cm)
WHEELBASE	66.18 in (168.1cm)
FRONT WHEEL TREAD	39.96 in (101.5cm)
REAR WHEEL TREAD	40.19 in (102.1cm)
MINIMUM GROUND CLEARANCE	4.56 in (11.6cm)
CURB WEIGHT (WITH SUN TOP, BATTERY, OIL AND GASOLINE)	452 kg (997 lb)

GENERAL

FUEL TANK CAPACITY	5.2 US GAL (20 LITERS)
TIRE SIZE	20x10-10 4-ply Monitor K389 (front) K500 (rear)
SEATING CAPACITY	Two persons
AVAILABLE MODEL COLORS	Glacier Metallic: Carbon, Evergreen
AVAILABLE SEAT COLORS	Black
AVAILABLE SUN TOP COLORS	Black
WARRANTY	Standard 2-year limited vehicle warranty
STANDARD RECEIVER HITCH	2"

ENGINE / DRIVE TRAIN

ENGINE TYPE	Yamaha-built 402cc, Low Emission Single Cylinder 60deg Incline OHV
LUBRICATION SYSTEM	Splash-style positive oil lubrication
OIL CAPACITY	1.16 U.S. quart (1.1 liter, 1100cc), Yamalube 10W-30
AIR CLEANER	Two-stage, urethane-foam pre-cleaner, and high-capacity pleated paper cartridge
COOLING SYSTEM	Forced air
FUEL SYSTEM	Electronic fuel injection
STARTING SYSTEM	Starter generator with pedal start system
HORSEPOWER	3600 rpm (14.25 hp)

CHASSIS

FRAME	HybriCore™ Chassis features a robotic welded automotive ladder-style steel frame protected with a multi-step full-immersion phosphate treatment, electro-deposition epoxy-based coating, and an electrostatic applied polyester/urethane powder topcoat
BODY	Custom-formulated thermoplastic olefin painted with a two-part top coat of high-luster automotive-grade polyurethane
STEERING	Self-compensating double reduction helical rack-and-pinion
FRONT SUSPENSION	Tru-Trak II™ fully independent automotive-style strut suspension
REAR SUSPENSION	Unit swing arm with DUAL RATE coil springs over hydraulic shock absorbers
BRAKES	Self-adjusting mechanical, rear wheel drum brakes
CARGO BED MAX LOAD	300 lb
ROLLING TRAILER MAX WEIGHT	800 lb
MAX TONGUE WEIGHT	100 lb
VEHICLE RATED CAPACITY	800 lb
CARGO BED DIMENSIONS	33.2" L x 45.9" W x 11.9" H

PERFORMANCE

MAX FORWARD SPEED	17.5 mph (28 km/h)
MAX REVERSE SPEED	13.1 mph (21 km/h)
MINIMUM TURNING RADIUS	3.48 m
G.V.W.	1,708 lb

UMAX TWO EFI

DIMENSIONS

OVERALL LENGTH	119.37 in (303.2cm)
OVERALL HEIGHT (NO SUN TOP)	48.54 in (123.3cm)
OVERALL HEIGHT (WITH SUN TOP)	74.02 in (188 cm)
OVERALL WIDTH	49.33 in (125.3cm)
WHEELBASE	77.2 in (196.1cm)
FRONT WHEEL TREAD	40.27 in (102.3cm)
REAR WHEEL TREAD	40.19 in (102.1cm)
MINIMUM GROUND CLEARANCE	4.52 in (11.5cm)
CURB WEIGHT (WITH SUN TOP, BATTERY, OIL AND GASOLINE)	483 kg (1064 lb)

GENERAL

FUEL TANK CAPACITY	5.2 US GAL (20 LITERS)
TIRE SIZE	20x10-10 4-ply Monitor K389 (front) K500 (rear)
SEATING CAPACITY	Two persons
AVAILABLE MODEL COLORS	Glacier Metallic: Carbon, Evergreen
AVAILABLE SEAT COLORS	Black
AVAILABLE SUN TOP COLORS	Black
WARRANTY	Standard 2-year limited vehicle warranty
STANDARD RECEIVER HITCH	2"

ENGINE / DRIVE TRAIN

ENGINE TYPE	Yamaha-built 402cc, Low Emission Single Cylinder 60deg Incline OHV
LUBRICATION SYSTEM	Splash-style positive oil lubrication
OIL CAPACITY	1.16 U.S. quart (1.1 liter, 1100cc), Yamalube 10W-30
AIR CLEANER	Two-stage, urethane-foam pre-cleaner, and high-capacity pleated paper cartridge
COOLING SYSTEM	Forced air
FUEL SYSTEM	Electronic fuel injection
STARTING SYSTEM	Starter generator with pedal start system
HORSEPOWER	3600 rpm (14.25 hp)

CHASSIS

FRAME	HybriCore™ Chassis features a robotic welded automotive ladder-style steel frame protected with a multi-step full-immersion phosphate treatment, electro-deposition epoxy-based coating, and an electrostatic applied polyester/urethane powder topcoat
BODY	Custom-formulated thermoplastic olefin painted with a two-part top coat of high-luster automotive-grade polyurethane
STEERING	Self-compensating double reduction helical rack-and-pinion
FRONT SUSPENSION	Tru-Trak II™ fully independent automotive-style strut suspension
REAR SUSPENSION	Unit swing arm with DUAL RATE coil springs over hydraulic shock absorbers
BRAKES	Self-adjusting mechanical, front and rear wheel drum brakes
CARGO BED MAX LOAD	800 lb
ROLLING TRAILER MAX WEIGHT	1,200 lb
MAX TONGUE WEIGHT	150 lb
VEHICLE RATED CAPACITY	1,500 lb
CARGO BED DIMENSIONS	41.1" L x 45.9" W x 11.9" H

PERFORMANCE

MAX FORWARD SPEED	17.5 mph (28 km/h)
MAX REVERSE SPEED	13.1 mph (21 km/h)
MINIMUM TURNING RADIUS	3.98 m
G.V.W.	2,533 lb

UMAX TWO AC

DIMENSIONS

OVERALL LENGTH	119.37 in (303.2 cm)
OVERALL HEIGHT (NO SUN TOP)	48.54 in (123.3 cm)
OVERALL HEIGHT (WITH SUN TOP)	74.02 in (188 cm)
OVERALL WIDTH	49.33 in (125.3 cm)
WHEELBASE	77.2 in (196.1 cm)
FRONT WHEEL TREAD	40.27 in (102.3 cm)
REAR WHEEL TREAD	40.19 in (102.1 cm)
MINIMUM GROUND CLEARANCE	4.52 in (11.5 cm)
CURB WEIGHT (WITH SUN TOP)	658 kg (1451 lb)

GENERAL

TIRE SIZE	20 x 10 - 10 4-ply Monitor K389 (front) K500 (rear)
SEATING CAPACITY	Two persons
AVAILABLE MODEL COLORS	Glacier Metallic: Carbon, Evergreen
AVAILABLE SEAT & SUN TOP COLOR	Black
WARRANTY	Standard 2-year limited vehicle warranty
STANDARD RECEIVER HITCH	2"

ENGINE / DRIVE TRAIN

MOTOR	48-volt AC
OUTPUT RATING	6.7 hp (5.0 kW FOR 60 minutes)
MOTOR CONTROL UNIT	NEOS 350 amp AC controller by Toyota Industries Corporation
BATTERIES	Standard: Six 8-volt Trojan T-105 Batteries

CHASSIS

FRAME	HybriCore™ Chassis features a robotic welded automotive ladder-style steel frame protected with a multi-step full-immersion phosphate treatment, electro-deposition epoxy-based coating and an electrostatic applied polyester/urethane powder topcoat
BODY	Custom-formulated thermoplastic olefin painted with a two-part top coat of high-luster automotive-grade polyurethane
STEERING	Self-compensating double reduction helical rack-and-pinion
FRONT SUSPENSION	Tru-Trak II™ fully independent automotive-style strut suspension
REAR SUSPENSION	Unit swing arm with DUAL RATE coil springs over hydraulic shock absorbers
BRAKES	Self-adjusting mechanical, front and rear wheel drum brakes
CARGO BED MAX LOAD	800 lb
ROLLING TRAILER MAX WEIGHT	1,200 lb
MAX TONGUE WEIGHT	150 lb
VEHICLE RATED CAPACITY	1,500 lb
CARGO BED DIMENSIONS	41.1" L x 45.9" W x 11.9" H

PERFORMANCE

MAX FORWARD SPEED	17.5 mph (28 km/h)
MAX REVERSE SPEED	6.2 mph (10 km/h)



UMAX BISTRO

DIMENSIONS

OVERALL LENGTH	127.60 in (324.1 cm)
OVERALL HEIGHT (NO SUN TOP)	48.54 in (123.3 cm)
OVERALL HEIGHT (WITH SUN TOP)	74.02 in (188 cm)
OVERALL WIDTH	49.5 in (125.7 cm)
WHEELBASE	77.2 in (196.1 cm)
FRONT WHEEL TREAD	40.27 in (102.3 cm)
REAR WHEEL TREAD	40.19 in (102.1 cm)
MINIMUM GROUND CLEARANCE	4.52 in (11.5 cm)
CURB WEIGHT	554 kg (1,221 lb)

GENERAL

TIRE SIZE	20x10-10 6-ply Kenda K389 (front) K500 (rear)
SEATING CAPACITY	Two persons
AVAILABLE MODEL COLORS	Glacier Metallic: Carbon, Evergreen
AVAILABLE SEAT & SUN TOP COLOR	Black
WARRANTY	Standard 2-year limited vehicle warranty

ENGINE / DRIVE TRAIN

ENGINE TYPE	Yamaha-built 402 cc, Low Emission Single Cylinder 60 deg Incline OHV
LUBRICATION SYSTEM	Splash-style positive oil lubrication
OIL CAPACITY	1.16 U.S. quart (1.1 liter, 1100 cc), Yamalube 10W-30
AIR CLEANER	Two-stage, urethane-foam pre-cleaner, and high-capacity pleated paper cartridge
COOLING SYSTEM	Forced air
FUEL SYSTEM	Electronic fuel injection
STARTING SYSTEM	Starter generator with pedal start system
HORSEPOWER	3600 rpm (14.25 hp)

CHASSIS

FRAME	HybriCore™ Chassis features a robotic welded automotive ladder-style steel frame protected with a multi-step full-immersion phosphate treatment, electro-deposition epoxy-based coating and an electrostatic applied polyester/urethane powder topcoat
BODY	Custom-formulated thermoplastic olefin painted with a two-part top coat of high-luster automotive-grade polyurethane
STEERING	Self-compensating double reduction helical rack-and-pinion
FRONT SUSPENSION	Tru-Trak II™ fully independent automotive-style strut suspension
REAR SUSPENSION	Unit swing arm with DUAL RATE coil springs over hydraulic shock absorbers
BRAKES	Self-adjusting mechanical, front and rear wheel drum brakes
CARGO BED MAX LOAD	800 lb
ROLLING TRAILER MAX WEIGHT	1,200 lb
MAX TONGUE WEIGHT	150 lb
VEHICLE RATED CAPACITY	1,500 lb
COLD STORAGE DIMENSIONS	39.2" L x 47.5" W x 15.25" H

UMAX RANGE PICKER

DIMENSIONS

OVERALL LENGTH	111.45 in (283.1 cm)
OVERALL HEIGHT (NO SUN TOP)	48.54 in (123.3 cm)
OVERALL HEIGHT (WITH SUN TOP)	71.81 in (182.4 cm)
OVERALL WIDTH	49.5 in (125.7 cm)
WHEELBASE	66.18 in (168.1 cm)
FRONT WHEEL TREAD	39.96 in (101.5 cm)
REAR WHEEL TREAD	40.19 in (102.1 cm)
MINIMUM GROUND CLEARANCE	4.56 in (11.6 cm)
CURB WEIGHT (WITH SUN TOP AND RANGE CAGE COMPLETE ENCLOSURE)	498 kg (1097 lb)

GENERAL

TIRE SIZE	20x10-10 4-ply Monitor K389 (front) K500 (rear)
SEATING CAPACITY	Two persons
AVAILABLE MODEL COLORS	Glacier Metallic: Carbon, Evergreen
AVAILABLE SEAT & SUN TOP COLOR	Black
WARRANTY	Standard 2-year limited vehicle warranty

ENGINE / DRIVE TRAIN

ENGINE TYPE	Yamaha-built 402 cc, Low Emission Single Cylinder 60deg Incline OHV
LUBRICATION SYSTEM	Splash-style positive oil lubrication
OIL CAPACITY	1.16 U.S. quart (1.1 liter, 1100 cc), Yamalube 10W-30
AIR CLEANER	Two-stage, urethane-foam pre-cleaner, and high-capacity pleated paper cartridge
COOLING SYSTEM	Forced air
FUEL SYSTEM	Electronic fuel injection
STARTING SYSTEM	Starter generator with pedal start system
HORSEPOWER	3600 rpm (14.25 hp)

CHASSIS

FRAME	HybriCore™ Chassis features a robotic welded automotive ladder-style steel frame protected with a multi-step full-immersion phosphate treatment, electro-deposition epoxy-based coating and an electrostatic applied polyester/urethane powder topcoat
BODY	Custom-formulated thermoplastic olefin painted with a two-part top coat of high-luster automotive-grade polyurethane
STEERING	Self-compensating double reduction helical rack-and-pinion
FRONT SUSPENSION	Tru-Trak II™ fully independent automotive-style strut suspension
REAR SUSPENSION	Unit swing arm with DUAL RATE coil springs over hydraulic shock absorbers
BRAKES	Self-adjusting mechanical, front and rear wheel drum brakes
CARGO BED CAPACITY	300 lb
TOWING CAPACITY	800 lb
CARGO BED DIMENSIONS	33.2" L x 45.9" W x 11.9" H

RALLY ONE EFI

DIMENSIONS

OVERALL LENGTH	114.6 in (291.2 cm)
OVERALL HEIGHT (NO SUN TOP)	50.7 in (128.8 cm)
OVERALL HEIGHT (WITH SUN TOP)	74.02 in (188 cm)
OVERALL WIDTH	53.5 in (136 cm)
WHEELBASE	66.3 in (168.3 cm)
FRONT WHEEL TREAD	40.9 in (104 cm)
REAR WHEEL TREAD	41.3 in (104.8 cm)
MINIMUM GROUND CLEARANCE	6.0 in (15.2 cm)
CURB WEIGHT (WITH SUN TOP, BATTERY, OIL AND GASOLINE)	470 kg (1036 lb)

GENERAL

FUEL TANK CAPACITY	5.2 U.S. gal (20 liters)
TIRE SIZE	23x10.5-12 4-ply Monitor K389 (front) K500 (rear)
SEATING CAPACITY	Two persons
AVAILABLE MODEL COLORS	Glacier Metallic: Carbon, Evergreen
AVAILABLE SEAT & SUN TOP COLOR	Black
WARRANTY	Standard 2-year limited vehicle warranty
STANDARD RECEIVER HITCH	2"

ENGINE / DRIVE TRAIN / POWER SUPPLY

ENGINE TYPE	Yamaha-built, 402 cc, low-emission single cylinder 60° incline OHV
LUBRICATION SYSTEM	Splash-style positive oil lubrication
OIL CAPACITY	1.16 U.S. quart (1.1 liter, 1100 cc), Yamalube 10W-30
AIR CLEANER	Two-stage, urethane-foam pre-cleaner and high-capacity pleated paper cartridge
COOLING SYSTEM	Forced air
FUEL SYSTEM	Electronic fuel injection
STARTING SYSTEM	Starter generator with pedal start system
HORSEPOWER	3600 rpm (14.25 hp)

CHASSIS

FRAME	HybriCore™ Chassis features a robotic welded automotive ladder-style steel frame protected with a multi-step full-immersion phosphate treatment, electro-deposition epoxy-based coating and an electrostatic applied polyester/urethane powder topcoat
BODY	Custom-formulated thermoplastic olefin painted with a two-part top coat of high-luster automotive-grade polyurethane
STEERING	Self-compensating double reduction helical rack-and-pinion
FRONT SUSPENSION	Tru-Trak II™ fully independent automotive-style strut suspension
REAR SUSPENSION	Unit swing arm with DUAL RATE coil springs over hydraulic shock absorbers
BRAKES	Self-adjusting mechanical, rear wheel drum brakes
CARGO BED MAX LOAD	300 lb
ROLLING TRAILER MAX WEIGHT	800 lb
MAX TONGUE WEIGHT	100 lb
VEHICLE RATED CAPACITY	800 lb
CARGO BED DIMENSIONS	33.2" L X 45.9" W x 11.9" H

PERFORMANCE

MAX FORWARD SPEED	17.5 mph (28 km/h)
MAX REVERSE SPEED	13.1 mph (21km/h)
MINIMUM TURNING RADIUS	3.48 m
G.V.W.	1,708 lb



RALLY TWO EFI

DIMENSIONS	
OVERALL LENGTH	122.6 in (311.3 cm)
OVERALL HEIGHT (NO SUN TOP)	50.7 in (128.8 cm)
OVERALL HEIGHT (WITH SUN TOP)	74.02 in (188 cm)
OVERALL WIDTH	53.5 in (136 cm)
WHEELBASE	77.3 in (196.3 cm)
FRONT WHEEL TREAD	41.3 in (104.8 cm)
REAR WHEEL TREAD	41.3 in (104.8 cm)
MINIMUM GROUND CLEARANCE	6.0 in (15.2 cm)
CURB WEIGHT (WITH SUN TOP, BATTERY, OIL AND GASOLINE)	501 kg (1105 lb)

GENERAL	
FUEL TANK CAPACITY	5.2 U.S. gal (20 liters)
TIRE SIZE	23x10.5-12 4-ply Monitor K389 (front) K500 (rear)
SEATING CAPACITY	Two persons
AVAILABLE MODEL COLORS	Glacier Metallic: Carbon, Evergreen
AVAILABLE SEAT & SUN TOP COLOR	Black
WARRANTY	Standard 2-year limited vehicle warranty
STANDARD RECEIVER HITCH	2"

ENGINE / DRIVE TRAIN / POWER SUPPLY

ENGINE TYPE	Yamaha-built, 402 cc, low-emission single cylinder 60° incline OHV
LUBRICATION SYSTEM	Splash-style positive oil lubrication
OIL CAPACITY	1.16 U.S. quart (1.1 liter, 1100 cc), Yamalube 10w-30
AIR CLEANER	Two-stage, urethane-foam pre-cleaner and high-capacity pleated paper cartridge
COOLING SYSTEM	Forced air
FUEL SYSTEM	Electronic fuel injection
STARTING SYSTEM	Starter generator with pedal start system
HORSEPOWER	3600 rpm (14.25 hp)

CHASSIS	
FRAME	HybriCore™ Chassis features a robotic welded automotive ladder-style steel frame protected with a multi-step full-immersion phosphate treatment, electro-deposition epoxy-based coating and an electrostatic applied polyester/urethane powder topcoat
BODY	Custom-formulated thermoplastic olefin painted with a two-part top coat of high-luster automotive-grade polyurethane
STEERING	Self-compensating double reduction helical rack-and-pinion
FRONT SUSPENSION	Tru-Trak II™ fully independent automotive-style strut suspension
REAR SUSPENSION	Unit swing arm with DUAL RATE coil springs over hydraulic shock absorbers
BRAKES	Self-adjusting mechanical, front and rear wheel drum brakes
CARGO BED MAX LOAD	800 lb
ROLLING TRAILER MAX WEIGHT	1,500 lb
MAX TONGUE WEIGHT	150 lb
VEHICLE RATED CAPACITY	1,500 lb
CARGO BED DIMENSIONS	41.1" L X 45.9" W x 11.9" H

PERFORMANCE	
MAX FORWARD SPEED	17.5 mph (28 km/h)
MAX REVERSE SPEED	13.1 mph (21km/h)
MINIMUM TURNING RADIUS	3.98 m
G.V.W.	2,533 lb

RALLY TWO AC

DIMENSIONS	
OVERALL LENGTH	122.6 in (311.3 cm)
OVERALL HEIGHT (NO SUN TOP)	50.7 in (128.8 cm)
OVERALL HEIGHT (WITH SUN TOP)	74.02 in (188 cm)
OVERALL WIDTH	53.5 in (136 cm)
WHEELBASE	77.3 in (196.3 cm)
FRONT WHEEL TREAD	41.3 in (104.8 cm)
REAR WHEEL TREAD	41.3 in (104.8 cm)
MINIMUM GROUND CLEARANCE	6.0 in (15.2 cm)
CURB WEIGHT (WITH SUN TOP)	676 kg (1490 lb)

GENERAL	
TIRE SIZE	23x10.5-12 4-ply Monitor K389 (front) K500 (rear)
SEATING CAPACITY	Two persons
AVAILABLE MODEL COLORS	Glacier Metallic: Carbon, Evergreen
AVAILABLE SEAT & SUN TOP COLOR	Black
WARRANTY	Standard 2-year limited vehicle warranty
STANDARD RECEIVER HITCH	2"

ENGINE / DRIVE TRAIN

MOTOR	48-volt AC
OUTPUT RATING	6.7 hp (5.0 kW)
MOTOR CONTROL UNIT	NEOS 350 amp AC controller by Toyota Industries Corporation
BATTERIES	Standard: Eight 6-volt Trojan T-105 Batteries

CHASSIS	
FRAME	HybriCore™ Chassis features a robotic welded automotive ladder-style steel frame protected with a multi-step full-immersion phosphate treatment, electro-deposition epoxy-based coating and an electrostatic applied polyester/urethane powder topcoat
BODY	Custom-formulated thermoplastic olefin painted with a two-part top coat of high-luster automotive-grade polyurethane
STEERING	Self-compensating double reduction helical rack-and-pinion
FRONT SUSPENSION	Tru-Trak II™ fully independent automotive-style strut suspension
REAR SUSPENSION	Unit swing arm with DUAL RATE coil springs over hydraulic shock absorbers
BRAKES	Self-adjusting mechanical, front and rear wheel drum brakes
CARGO BED MAX LOAD	800 lb
ROLLING TRAILER MAX WEIGHT	1,500 lb
MAX TONGUE WEIGHT	150 lb
VEHICLE RATED CAPACITY	1,500 lb
CARGO BED DIMENSIONS	41.1" L X 45.9" W x 11.9" H

PERFORMANCE	
MAX FORWARD SPEED	17.5 mph (28 km/h)
MAX REVERSE SPEED	6.2 mph (10 km/h)
MINIMUM TURNING RADIUS	3.98 m
G.V.W.	2,910 lb

RALLY 2+2 EFI

DIMENSIONS	
OVERALL LENGTH	134.37 in (341.3 cm)
OVERALL HEIGHT (NO SUN TOP)	57.48 in (146 cm)
OVERALL HEIGHT (WITH SUN TOP)	77.20 in (196.1 cm)
OVERALL WIDTH	53.54 in (136 cm)
WHEELBASE	77.28 in (196.3 cm)
FRONT WHEEL TREAD	41.26 in (104.8 cm)
REAR WHEEL TREAD	41.26 in (104.8 cm)
MINIMUM GROUND CLEARANCE	5.94 in (15.1 cm)
CURB WEIGHT	610 kg (1345 lb)

GENERAL	
FUEL TANK CAPACITY	5.2 US GAL (20 LITERS)
TIRE SIZE	23x10.5-12 4-ply Monitor K389 (front) K500 (rear)
SEATING CAPACITY	Four persons
AVAILABLE MODEL COLORS	Glacier, Coral Red, Bluestone, Cyan, Onyx, Carbon Matte: Titan
AVAILABLE SEAT & SUN TOP COLOR	Black
WARRANTY	Standard 2-year limited vehicle warranty

ENGINE / DRIVE TRAIN

ENGINE TYPE	Yamaha-built 402 cc, Low Emission Single Cylinder 60deg Incline OHV
LUBRICATION SYSTEM	Splash-style positive oil lubrication
OIL CAPACITY	1.16 U.S. quart (1.1 liter, 1100 cc), Yamalube 10W-30
AIR CLEANER	Two-stage, urethane-foam pre-cleaner, and high-capacity pleated paper cartridge
COOLING SYSTEM	Forced air
FUEL SYSTEM	Electronic fuel injection
STARTING SYSTEM	Starter generator with pedal start system
HORSEPOWER	3600 rpm (14.25 hp)

CHASSIS	
FRAME	HybriCore™ Chassis features a robotic welded automotive ladder-style steel frame protected with a multi-step full-immersion phosphate treatment, electro-deposition epoxy-based coating, and an electrostatic applied polyester/urethane powder topcoat
BODY	Custom-formulated thermoplastic olefin painted with a two-part top coat of high-luster automotive-grade polyurethane
STEERING	Self-compensating double reduction helical rack-and-pinion
FRONT SUSPENSION	Tru-Trak II™ fully independent automotive-style strut suspension
REAR SUSPENSION	Unit swing arm with DUAL RATE coil springs over hydraulic shock absorbers
BRAKES	Mechanical, 4-wheel drum
FLIP-SEAT CARGO BED MAX LOAD	250 lb
MAXIMUM COMBINED LOAD WITH TWO PASSENGERS AND CARGO	400 lb
VEHICLE RATED CAPACITY	1,000 lb

PERFORMANCE	
MAX FORWARD SPEED	15 mph (24.1 km/h)
MAX REVERSE SPEED	11.2 mph (18 km/h)
MINIMUM TURNING RADIUS	3.98 m
G.V.W.	2,717 lb

RALLY 2+2 AC

DIMENSIONS	
OVERALL LENGTH	134.37 in (341.3 cm)
OVERALL HEIGHT (NO SUN TOP)	57.48 in (146 cm)
OVERALL HEIGHT (WITH SUN TOP)	77.20 in (196.1 cm)
OVERALL WIDTH	53.54 in (136 cm)
WHEELBASE	77.28 in (196.3 cm)
FRONT WHEEL TREAD	41.26 in (104.8 cm)
REAR WHEEL TREAD	41.26 in (104.8 cm)
MINIMUM GROUND CLEARANCE	5.98 in (15.2 cm)
CURB WEIGHT	779 kg (1717 lb)

GENERAL	
TIRE SIZE	23x10.5-12 4-ply Monitor K389 (front) K500 (rear)
SEATING CAPACITY	Four persons
AVAILABLE MODEL COLORS	Glacier, Coral Red, Bluestone, Cyan, Onyx, Carbon Matte: Titan
AVAILABLE SEAT & SUN TOP COLOR	Black
WARRANTY	Standard 2-year limited vehicle warranty

ENGINE / DRIVE TRAIN

MOTOR	48-volt AC
OUTPUT RATING	6.7 hp (5.0 kW for 60 minutes)
MOTOR CONTROL UNIT	NEOS 350 amp AC controller by Toyota Industries Corporation
BATTERIES	Standard: Eight 6-volt Trojan T-105 Batteries

CHASSIS	
FRAME	HybriCore™ Chassis features a robotic welded automotive ladder-style steel frame protected with a multi-step full-immersion phosphate treatment, electro-deposition epoxy-based coating, and an electrostatic applied polyester/urethane powder topcoat
BODY	Custom-formulated thermoplastic olefin painted with a two-part top coat of high-luster automotive-grade polyurethane
STEERING	Self-compensating double reduction helical rack-and-pinion
FRONT SUSPENSION	Tru-Trak II™ fully independent automotive-style strut suspension
REAR SUSPENSION	Unit swing arm with DUAL RATE coil springs over hydraulic shock absorbers
BRAKES	Mechanical, 4-wheel drum
CARGO BED MAX LOAD	250 lb
ROLLING TRAILER MAX WEIGHT	1,200 lb
MAX TONGUE WEIGHT	400 lb
VEHICLE RATED CAPACITY	1,000 lb
CARGO BED DIMENSIONS	41.1" L x 45.9" W x 11.9" H

PERFORMANCE	
MAX FORWARD SPEED	15 mph (24.1 km/h)
MAX REVERSE SPEED	6.2 mph (10 km/h)
MINIMUM TURNING RADIUS	3.98 m
G.V.W.	2,345 lb



1270 Chastain Road NW
Kennesaw, Georgia 30144
1.866.747.4027 | YamahaGolfCar.com



This document contains many of the valuable trademarks and service marks owned and used by Yamaha throughout the world. The document may also contain references to other company, brand, and product names that may be the trademarks/service marks of their respective owners. Unless noted otherwise, these company, brand, and product names are used herein for identification purposes only, and reference to any names, marks, products, or services of third parties do not constitute or imply endorsement, sponsorship, or recommendation of the third party or the product or services. Products and specifications are subject to change without notice.