



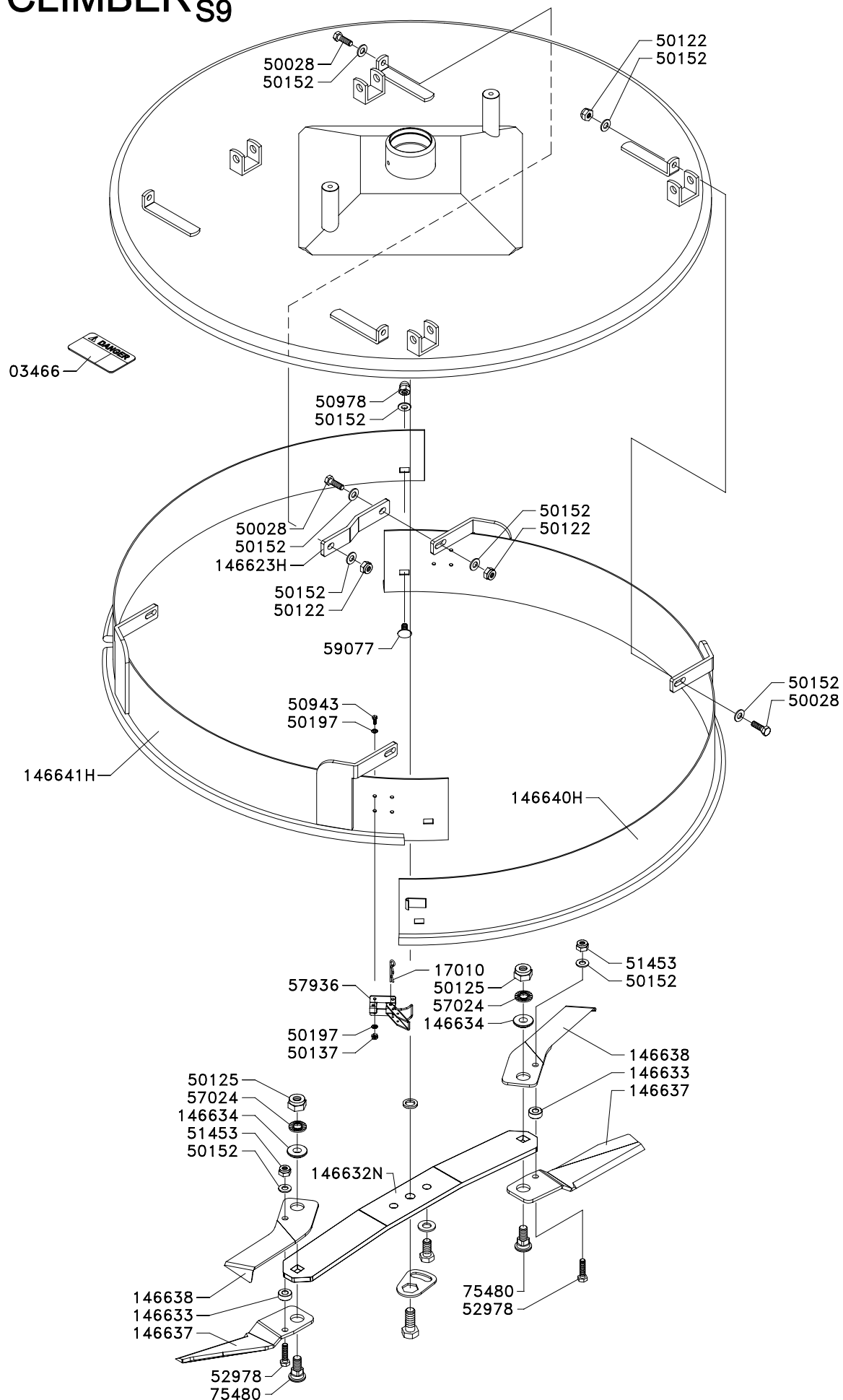
CLIMBER SERIES 9

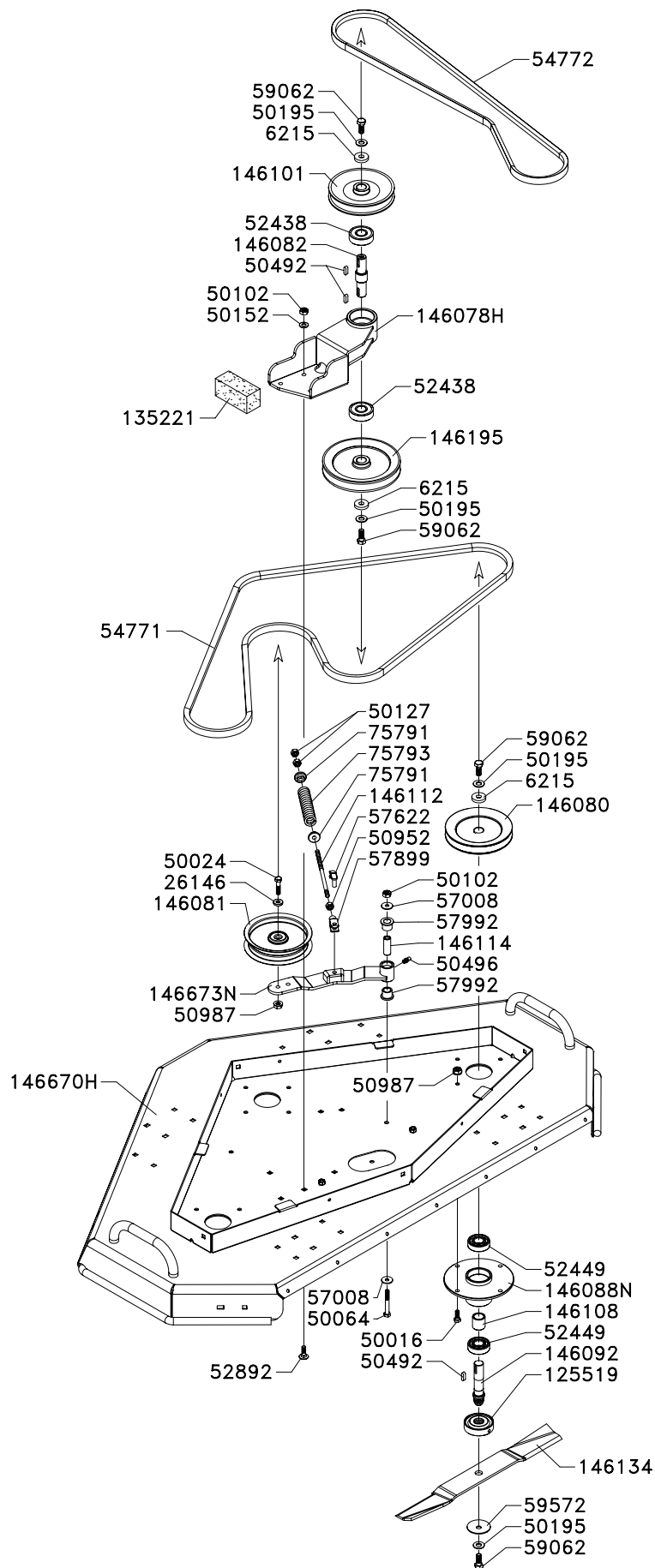
SPARE PARTS BOOKLET

From Serial Number 385501

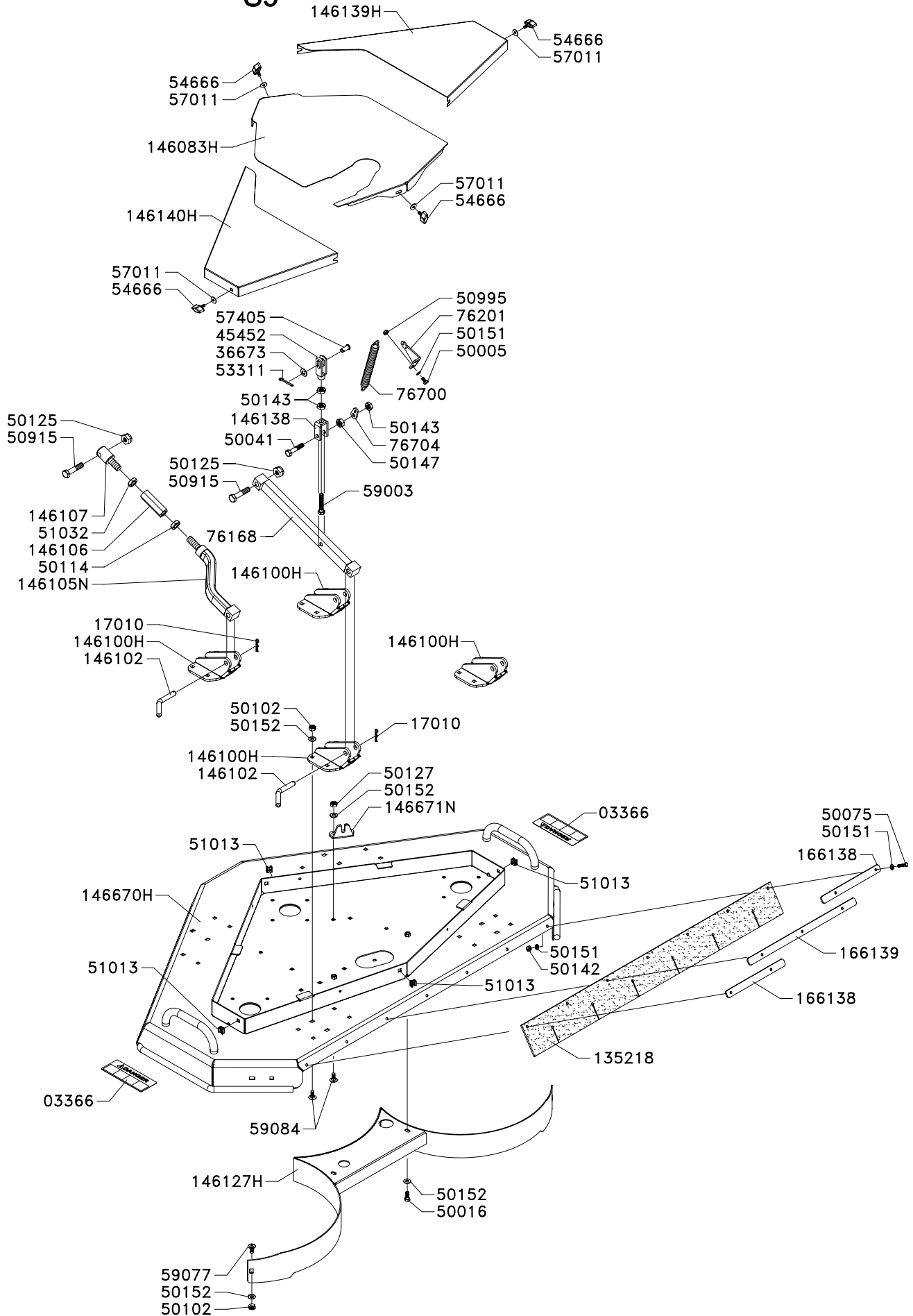
CLIMBER_{S9}

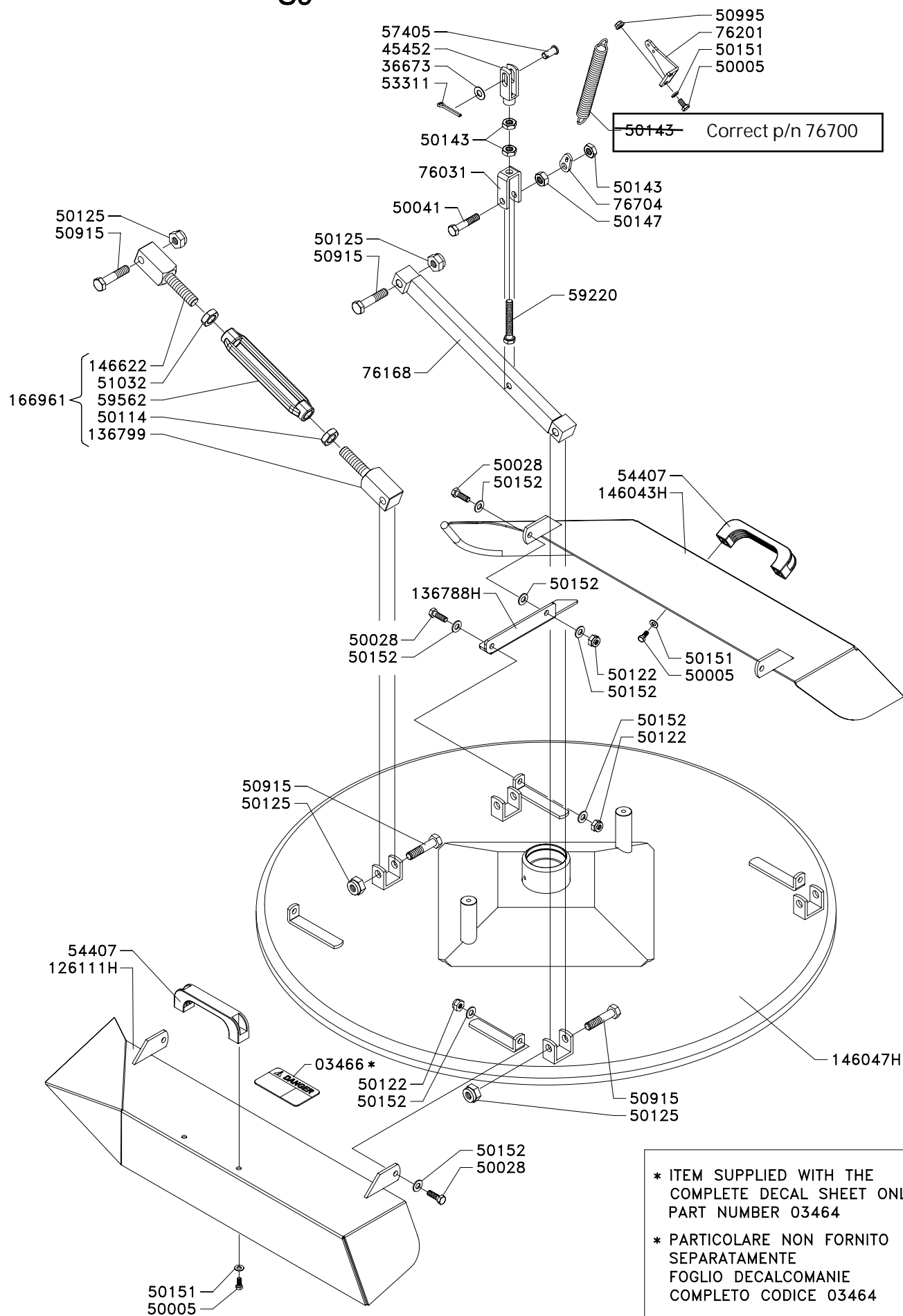
MULCHING KIT





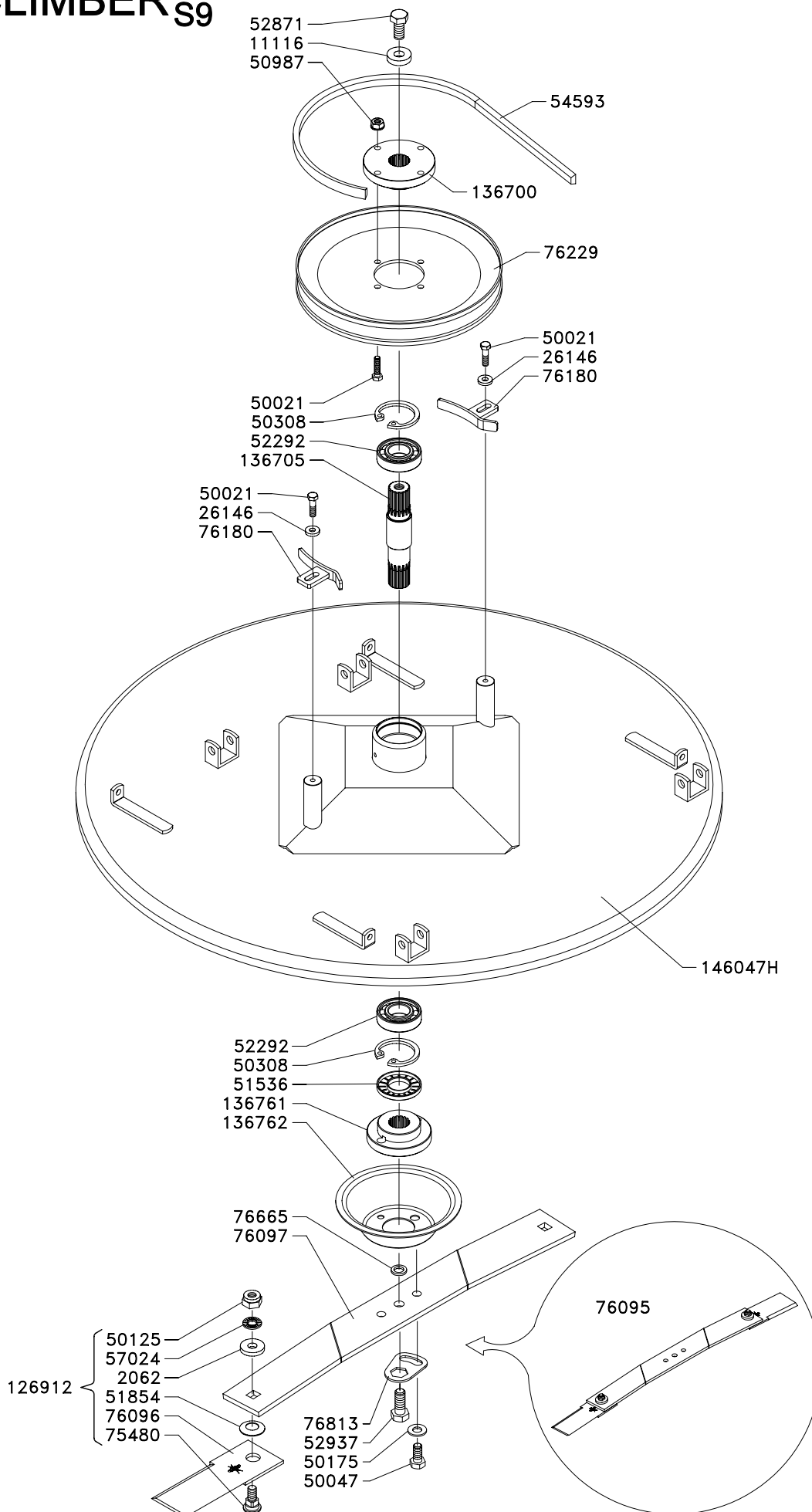
CLIMBER_{S9}





* ITEM SUPPLIED WITH THE
COMPLETE DECAL SHEET ONLY
PART NUMBER 03464

* PARTICOLARE NON FORNITO
SEPARATAMENTE
FOGLIO DECALCOMANIE
COMPLETO CODICE 03464



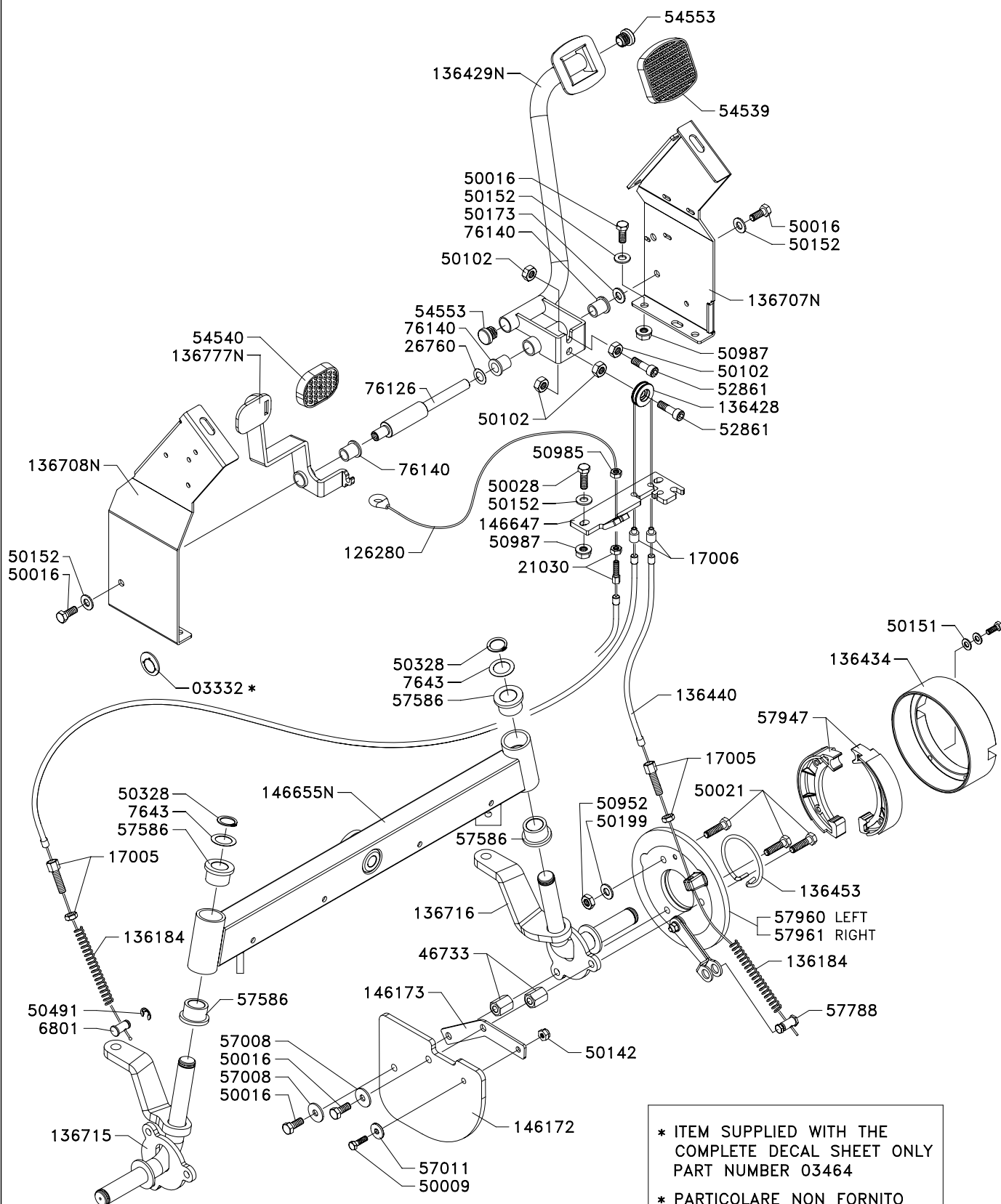
Grillo

CLIMBER_{S9}

PEDALS UNIT WITH FRONT BRAKE

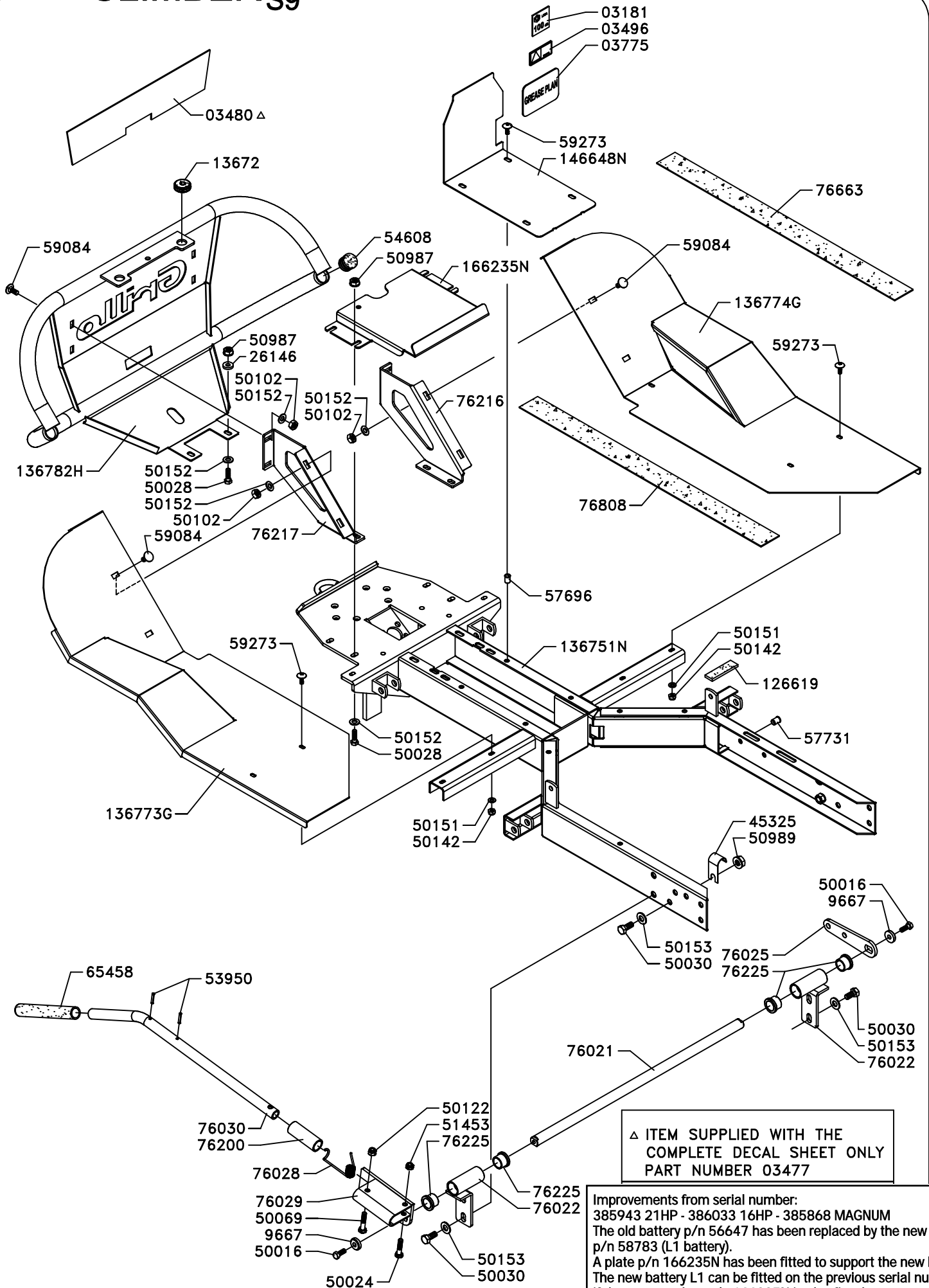
PEDALIERA CON FRENO ANTERIORE
PEDALERIESATZ MIT VORDERBREMSE
GROUPE PÉDALIER AVEC FREIN AVANT
GRUPO PEDALES CON FRENO DELANTERO

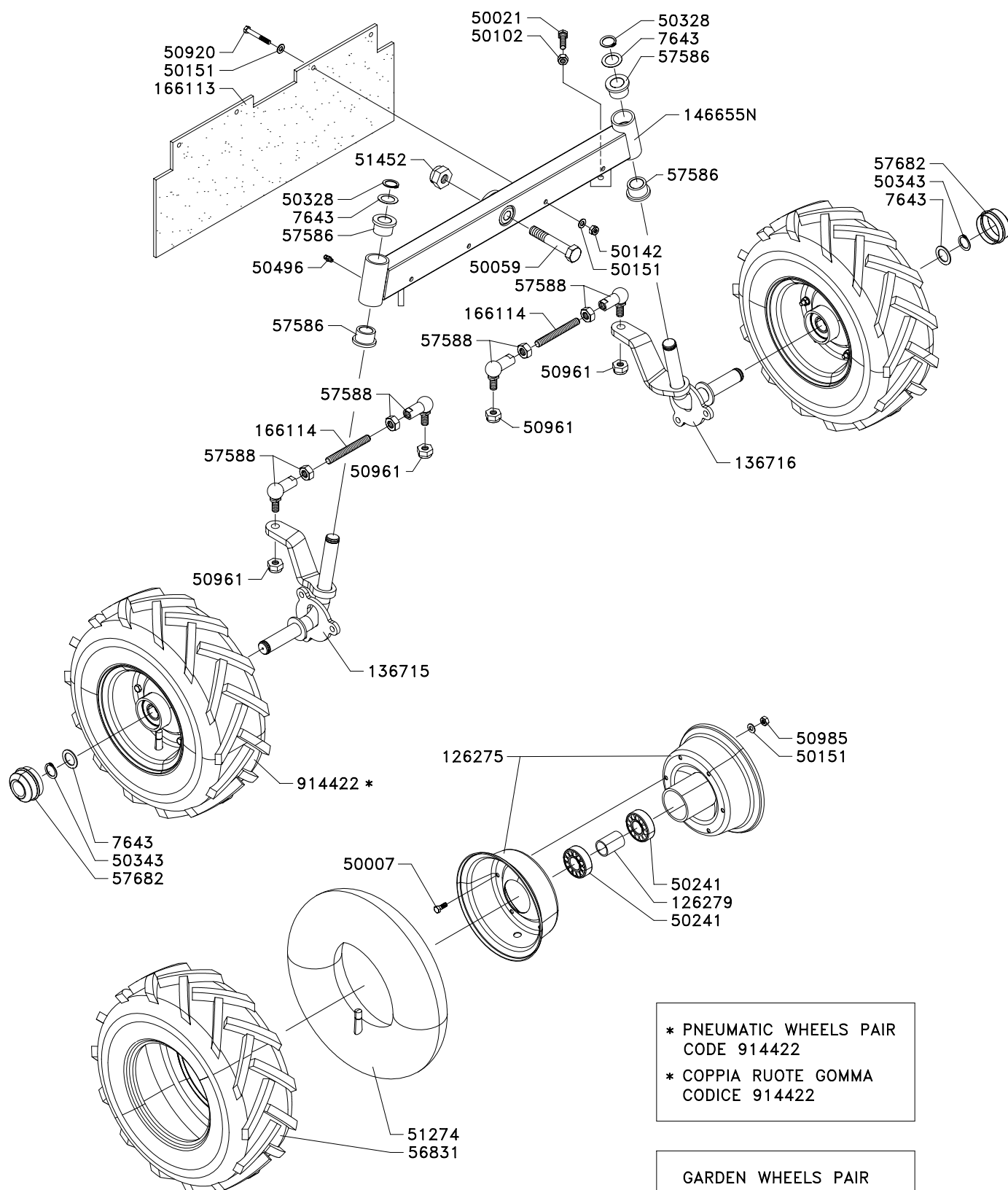
146856



* ITEM SUPPLIED WITH THE
COMPLETE DECAL SHEET ONLY
PART NUMBER 03464

* PARTICOLARE NON FORNITO
SEPARATAMENTE
FOGLIO DECALCOMANIE
COMPLETO CODICE 03464



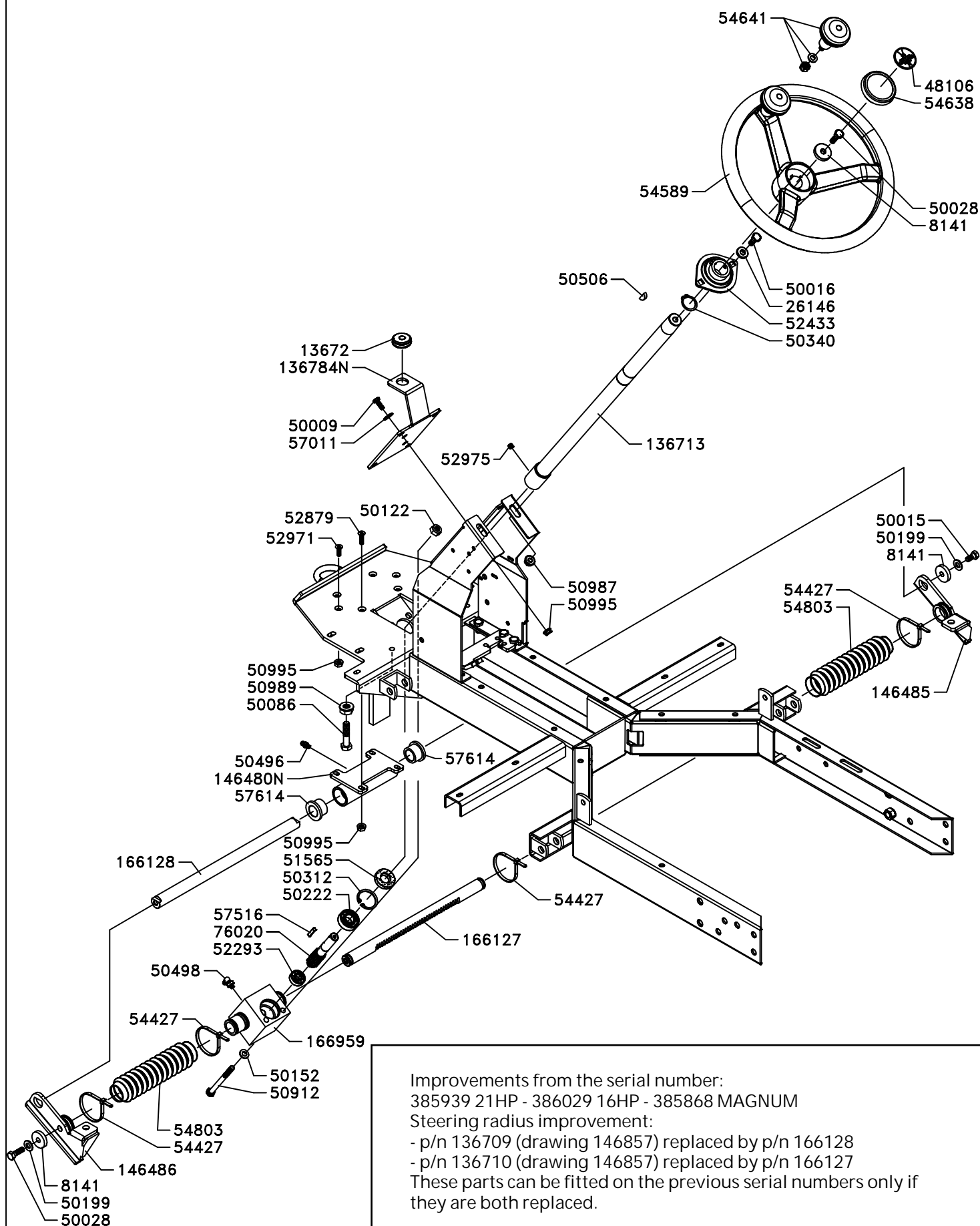


* PNEUMATIC WHEELS PAIR
 CODE 914422

* COPPIA RUOTE GOMMA
 CODICE 914422

GARDEN WHEELS PAIR
 CODE 917522

COPPIA RUOTE GARDEN
 CODICE 917522



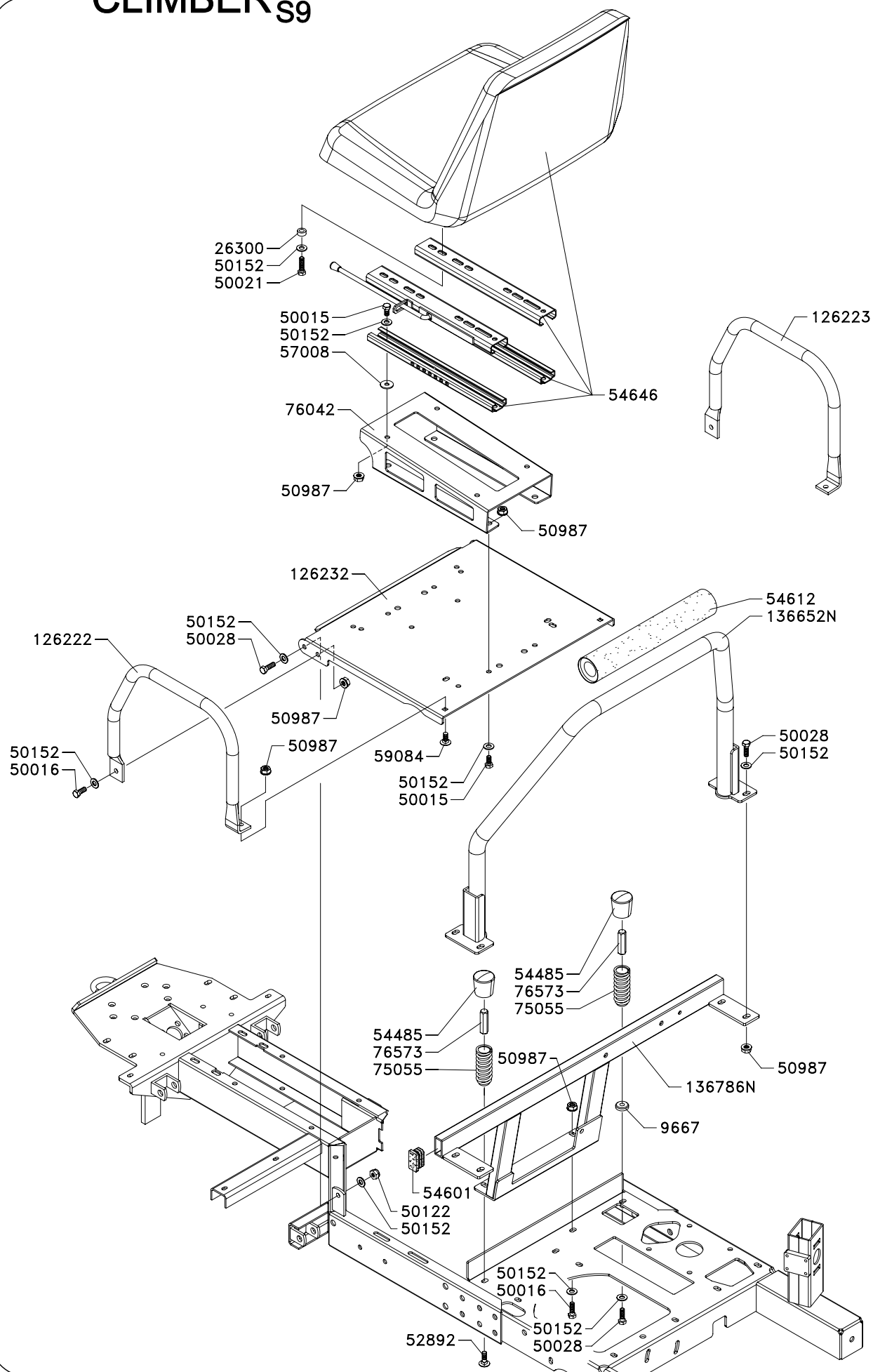
Improvements from the serial number:
385939 21HP - 386029 16HP - 385868 MAGNUM

Steering radius improvement:

- p/n 136709 (drawing 146857) replaced by p/n 166128
- p/n 136710 (drawing 146857) replaced by p/n 166127

These parts can be fitted on the previous serial numbers only if they are both replaced.

New steering levers right and left p/n 146485 and 146486 (the p/n has not been changed and they can be fitted on the old serial numbers).



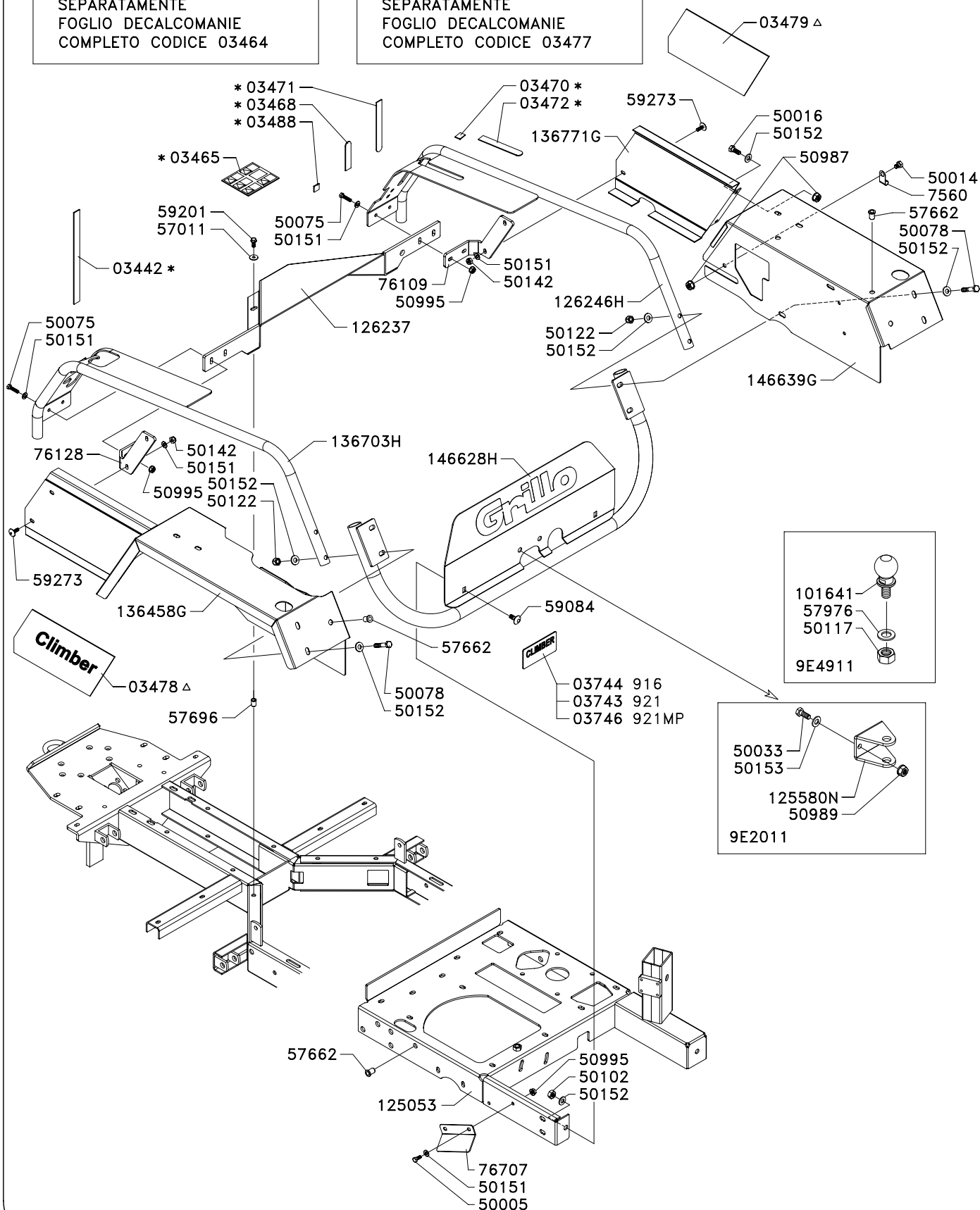
CLIMBER_{S9}

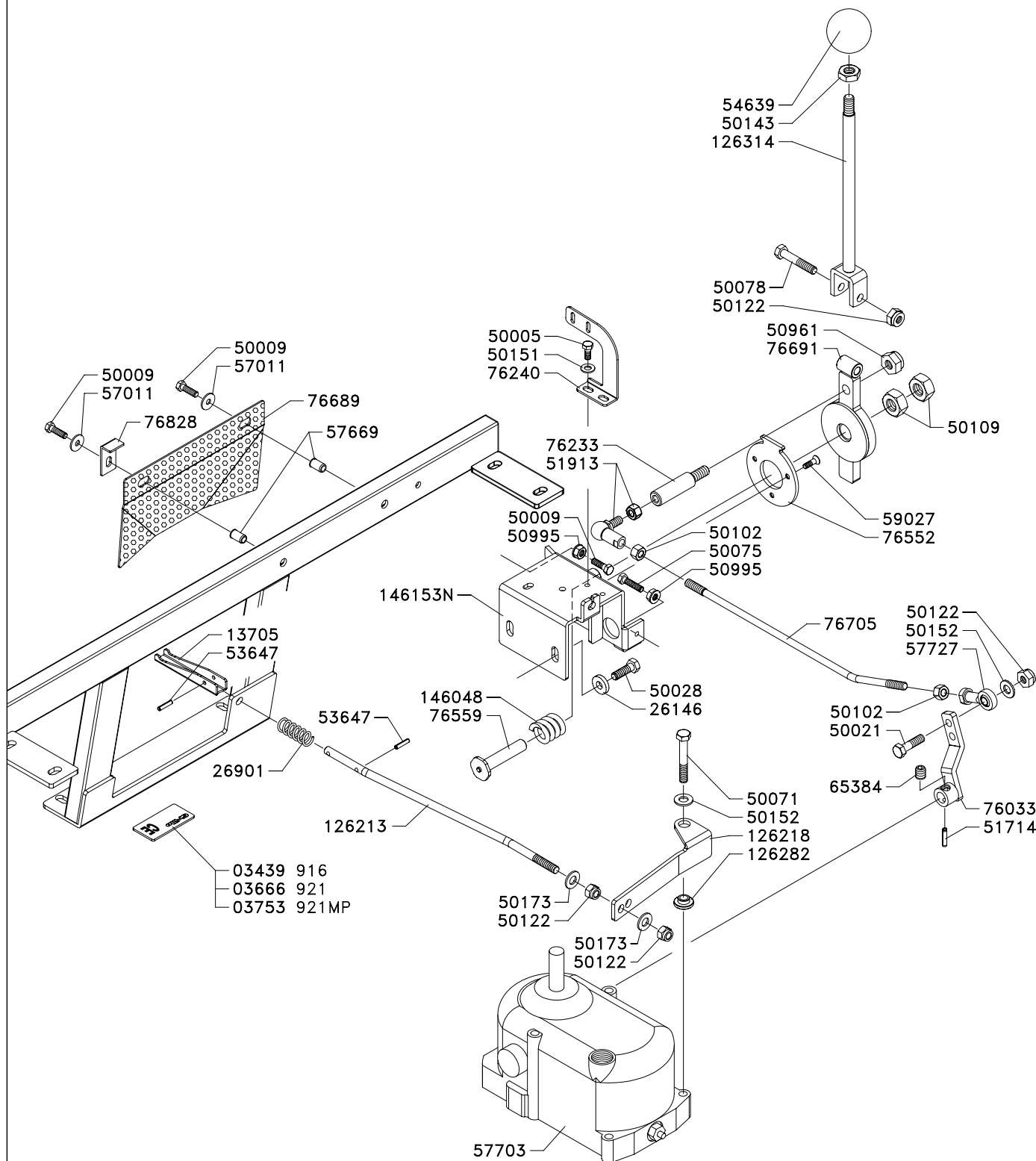
* ITEM SUPPLIED WITH THE
COMPLETE DECAL SHEET ONLY
PART NUMBER 03464

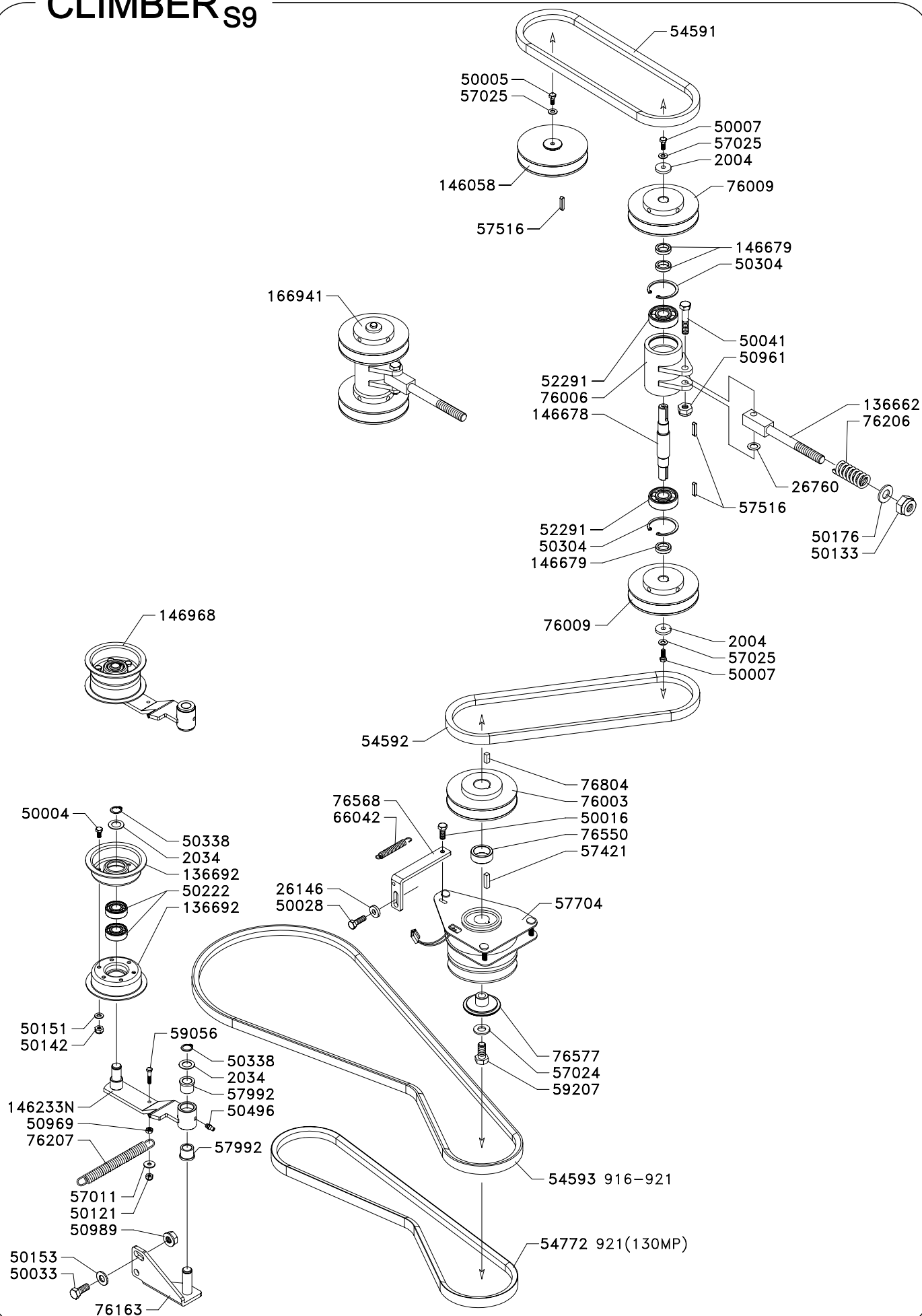
* PARTICOLARE NON FORNITO
SEPARATAMENTE
FOGLIO DECALCOMANIE
COMPLETO CODICE 03464

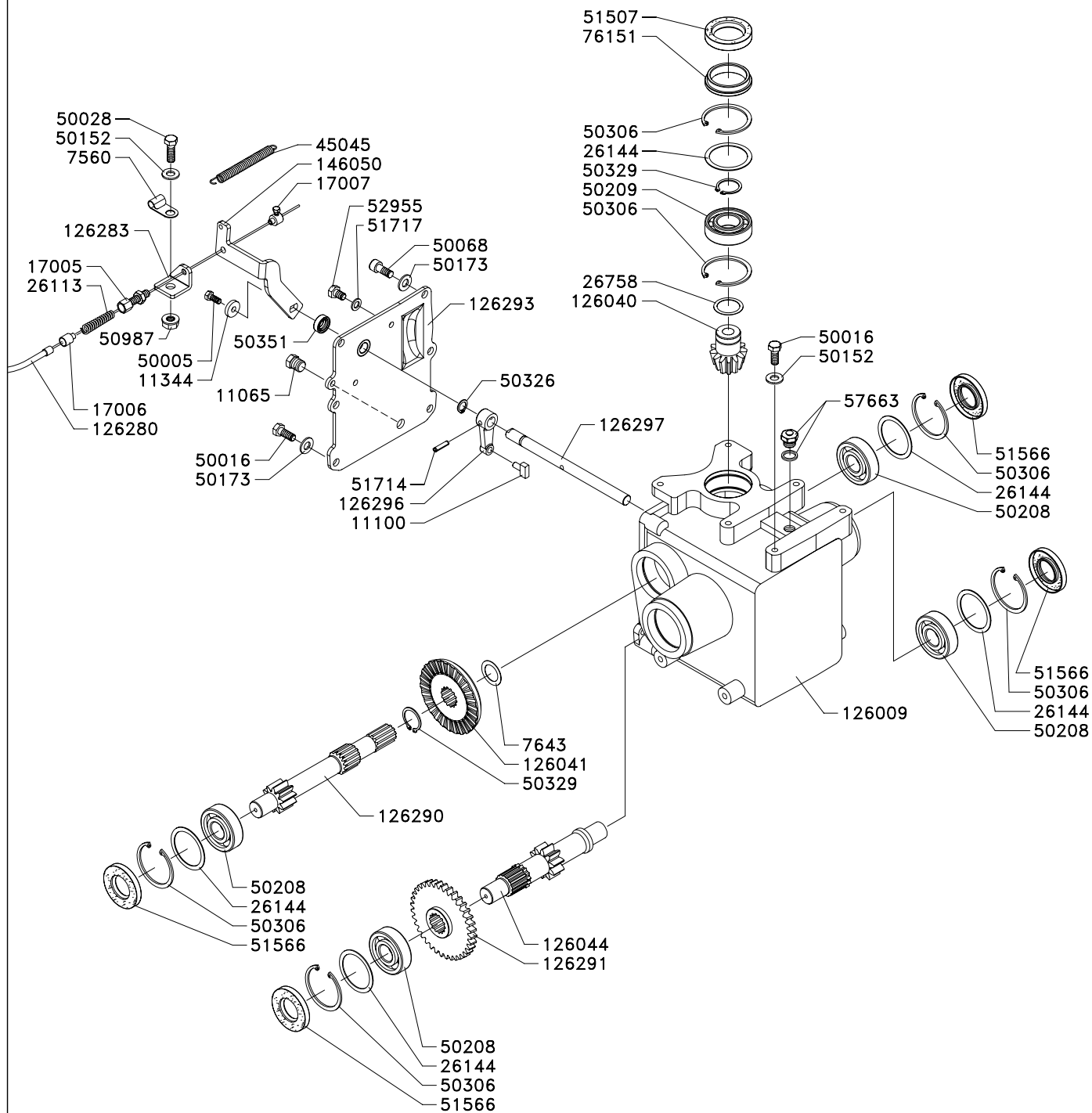
△ ITEM SUPPLIED WITH THE
COMPLETE DECAL SHEET ONLY
PART NUMBER 03477

△ PARTICOLARE NON FORNITO
SEPARATAMENTE
FOGLIO DECALCOMANIE
COMPLETO CODICE 03477



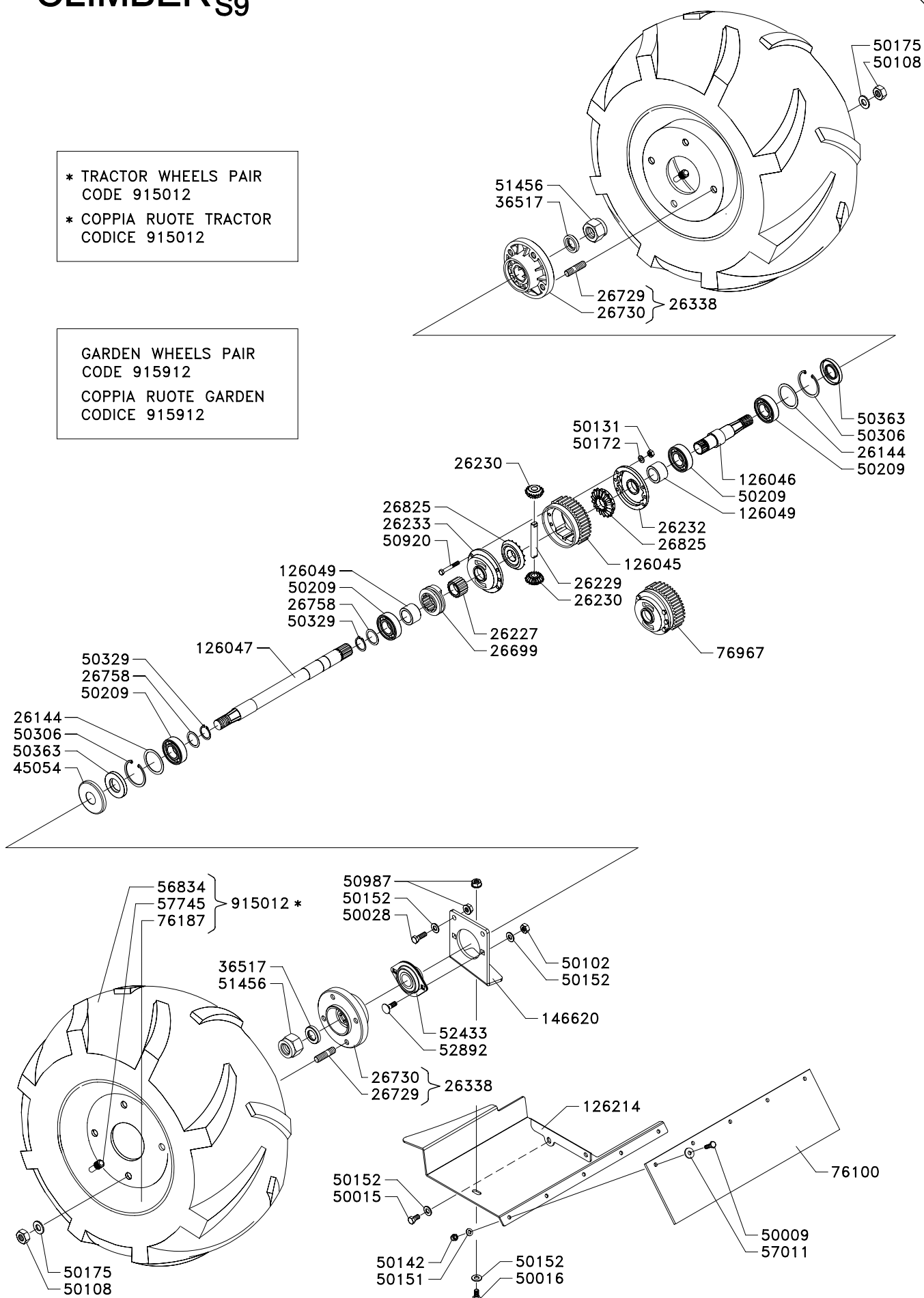




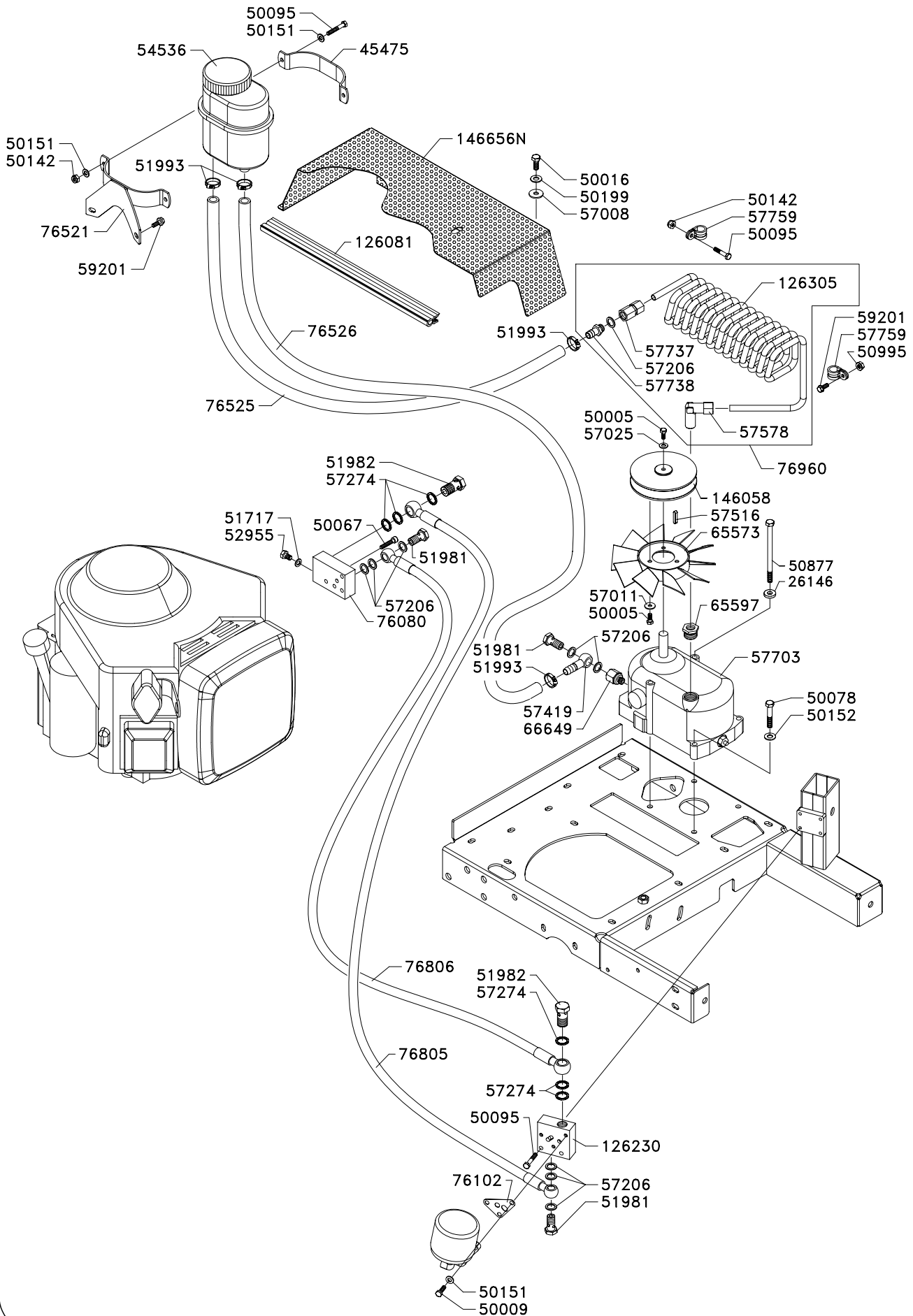


* TRACTOR WHEELS PAIR
 CODE 915012
 * COPPIA RUOTE TRACTOR
 CODICE 915012

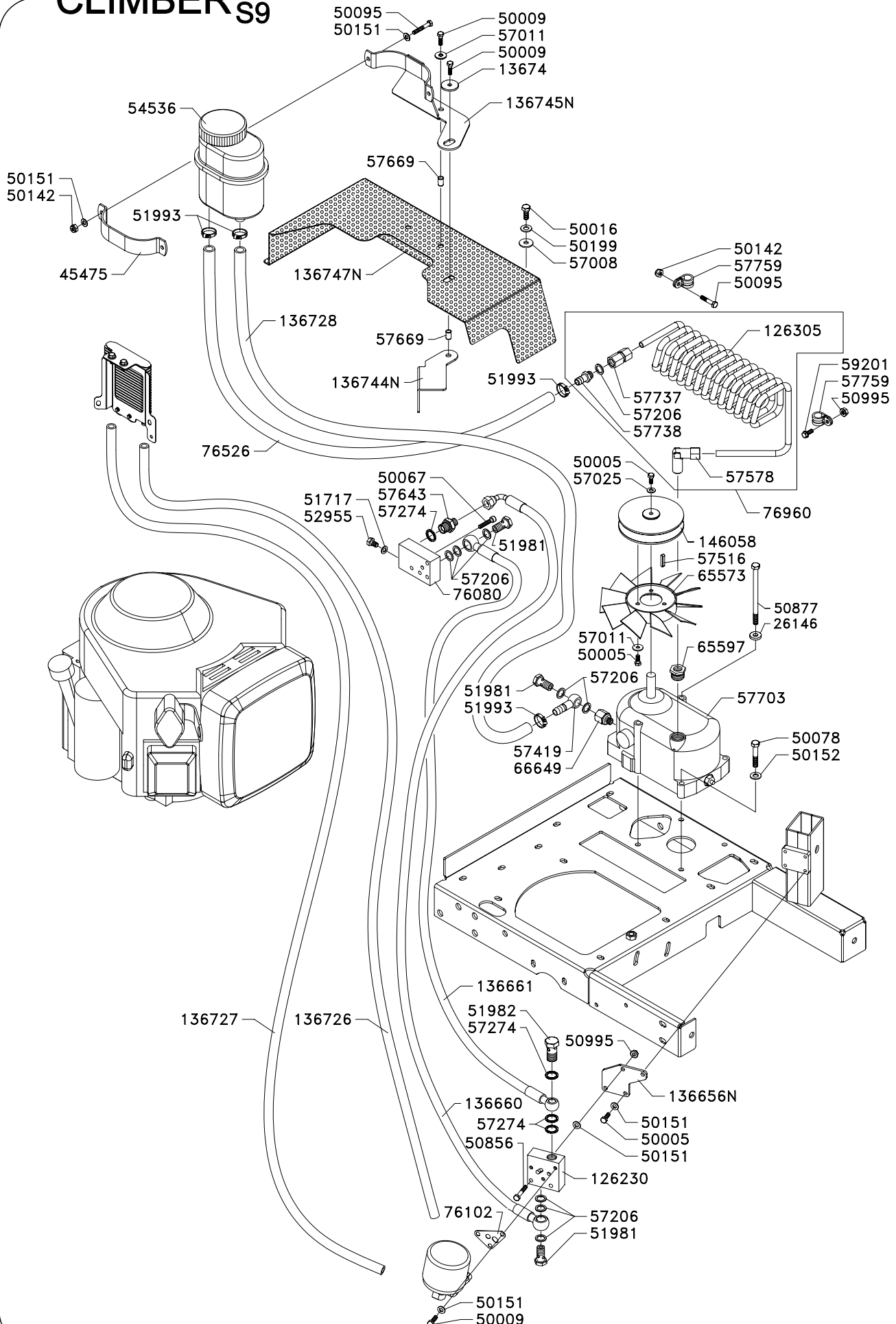
GARDEN WHEELS PAIR
 CODE 915912
 COPPIA RUOTE GARDEN
 CODICE 915912

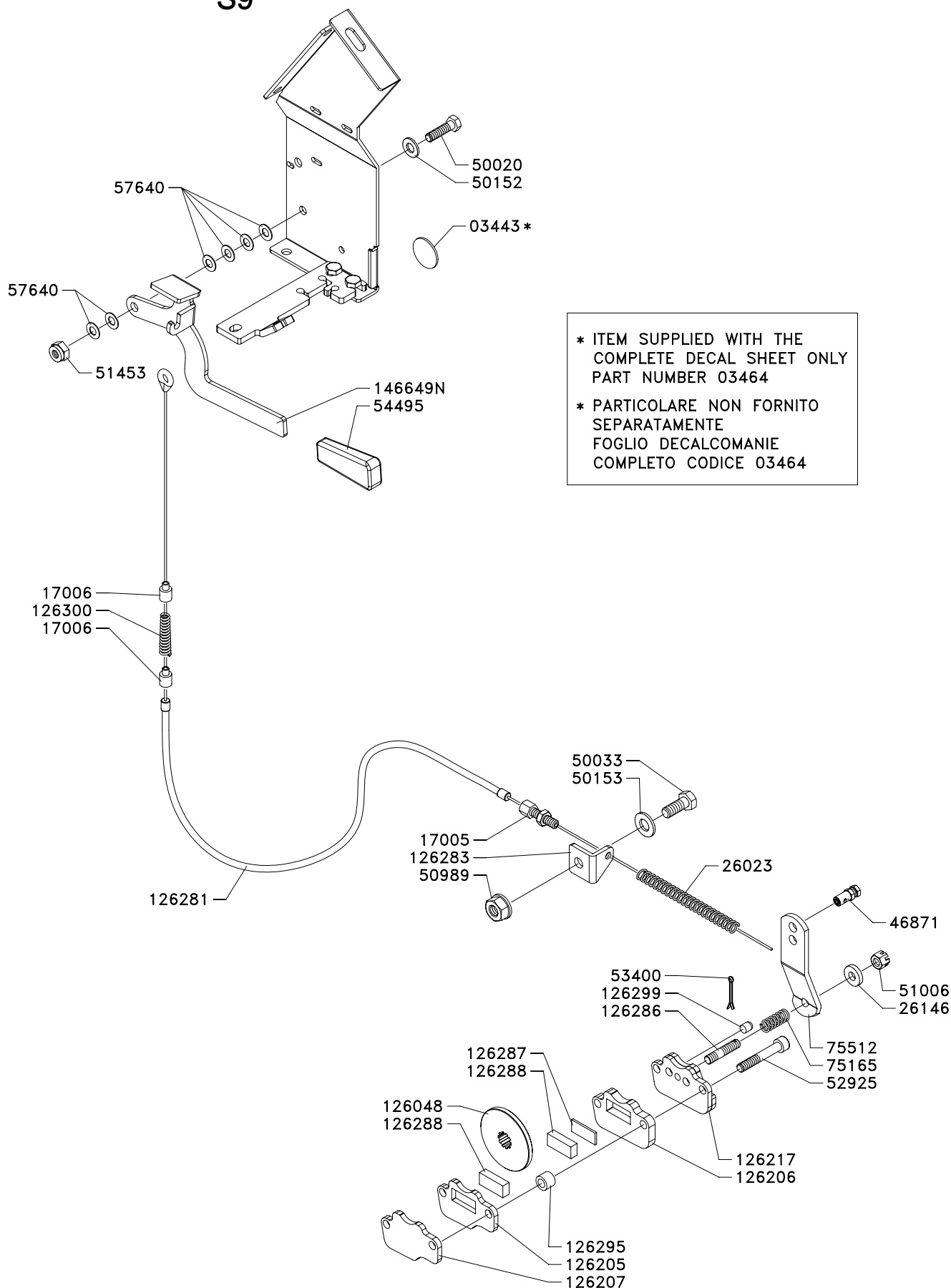


CLIMBER_{S9}



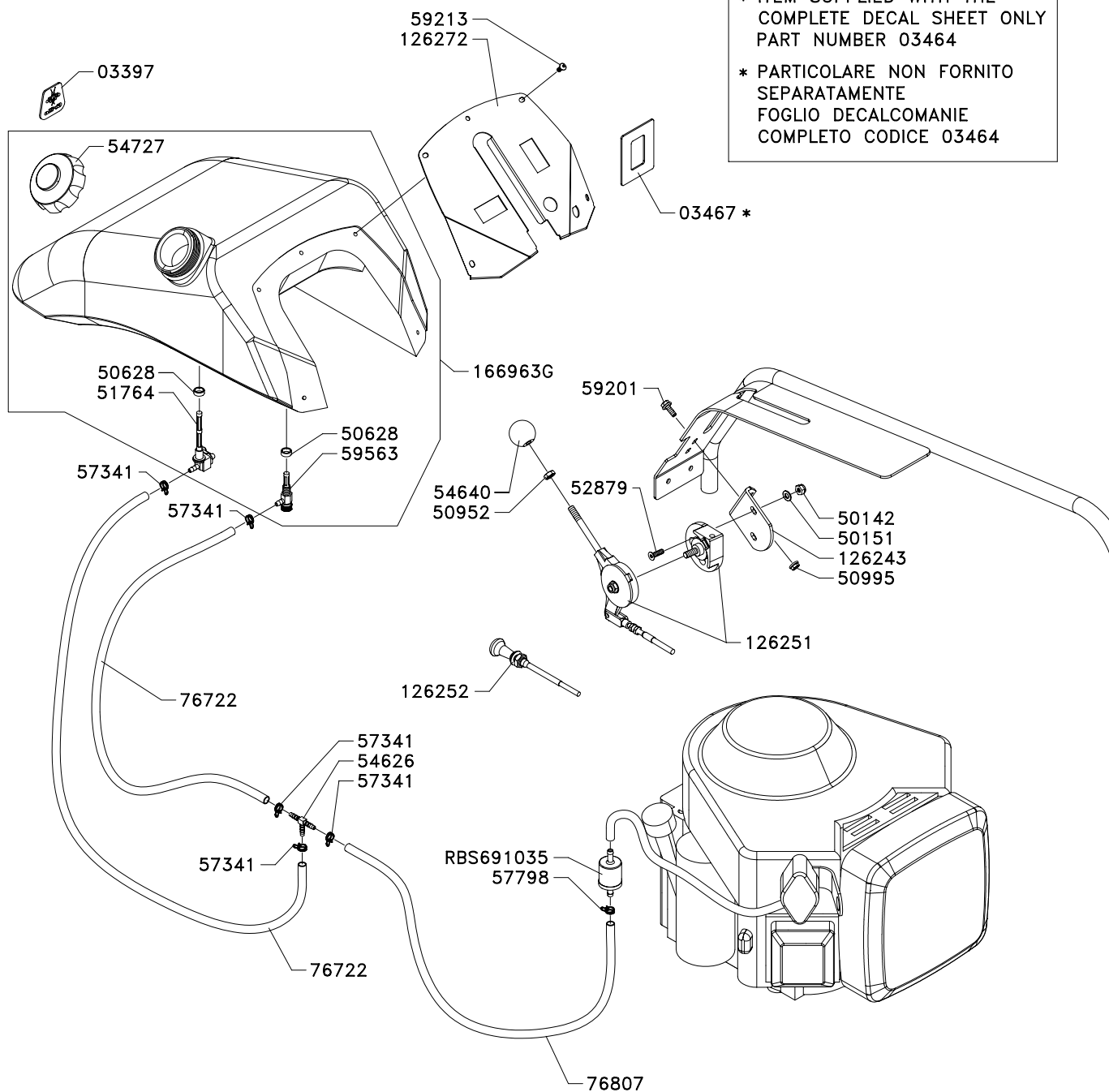
CLIMBER_{S9}





* ITEM SUPPLIED WITH THE
 COMPLETE DECAL SHEET ONLY
 PART NUMBER 03464

* PARTICOLARE NON FORNITO
 SEPARATAMENTE
 FOGLIO DECALCOMANIE
 COMPLETO CODICE 03464



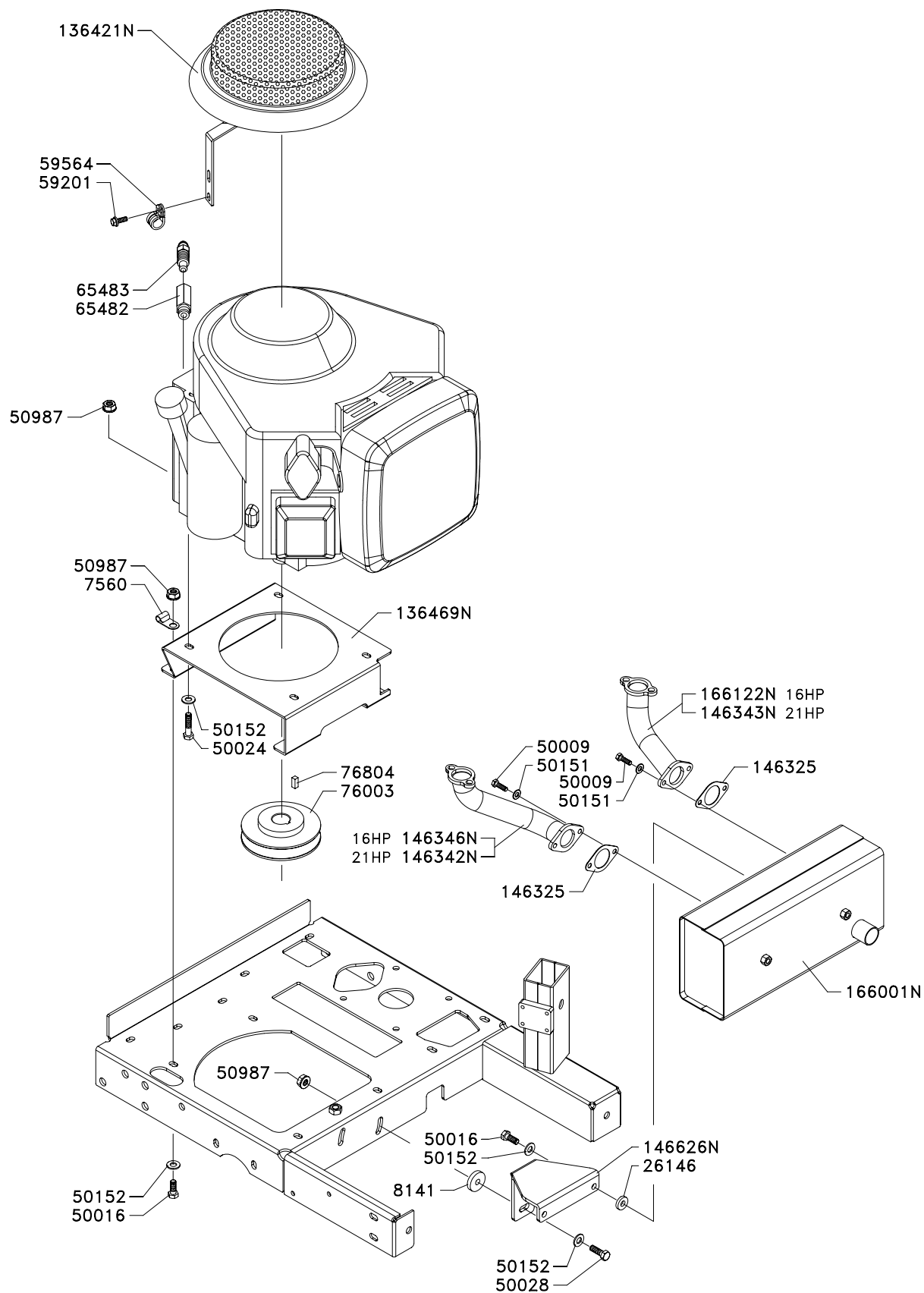
Grillo

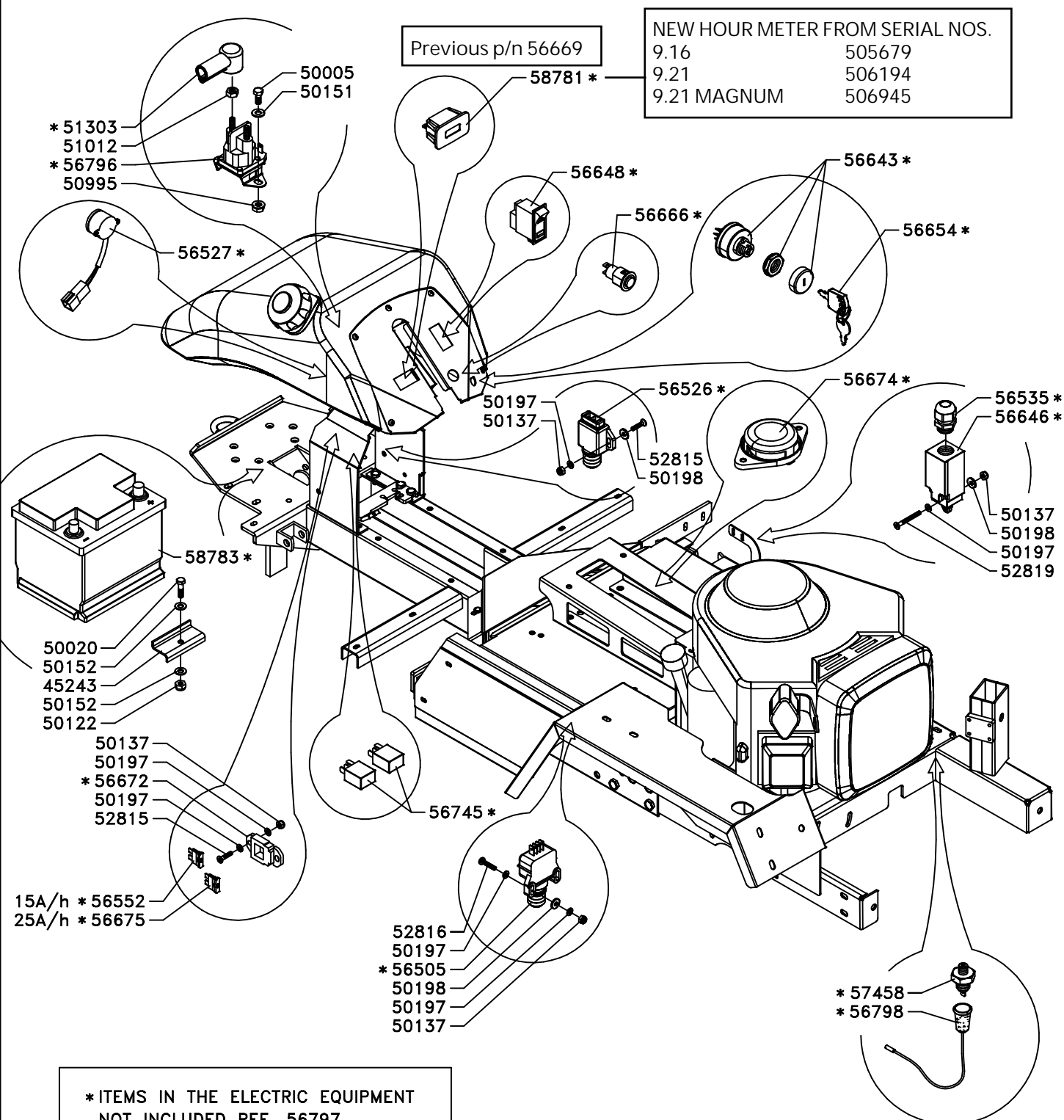
ENGINE B&S VANGUARD 16-21HP

MOTORE
MOTOR
MOTEUR
MOTOR

146860

CLIMBER_{S9}





* ITEMS IN THE ELECTRIC EQUIPMENT
 NOT INCLUDED REF. 56797
 * PARTI NON COMPRESSE NELL'IMPIANTO
 ELETTRICO CODICE 56797
 * TEILE IN DER ELEKTRISCHEN ANLAGE
 NICHT IMBEGRIFFEN REF.56797
 * PIÈCES PAS COMPRISES DANS
 L'INSTALLATION ELECTRIQUE
 REF.56797
 * PIEZAS QUE NO ESTÁN INCLUIDAS EN
 EL EQUIPO LUCES CÓDIGO 56797

Improvements from serial number:
 385943 21HP - 386033 16HP - 385868 MAGNUM
 The old battery p/n 56674 has been replaced by p/n
 58783 (L1 battery).
 A plate p/n 166235N has been fitted in order to
 support the new battery.
 The new battery L1 can be fitted on the previous
 serial numbers if the support plate p/n 166235N is
 also fitted (see drawing 146853.1)