



passion for sports grounds

SMG Sportplatzmaschinenbau GmbH

Robert-Bosch-Str. 3, DE - 89269 Vöhringen / Germany

Phone: +49 (0) 7306 96 65 0

Fax: +49 (0) 7306 96 65 50

E-mail: info@smg-machines.com

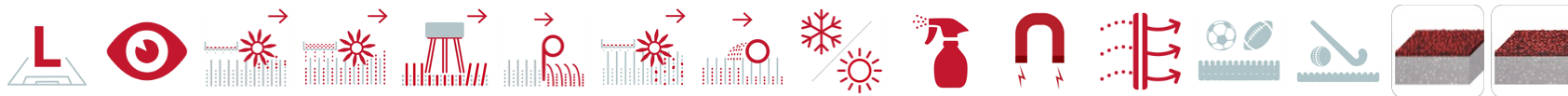


SportChamp - Maintenance
SportChamp SC2D



SportChamp - Maintenance

SportChamp SC2D



Item number/s:

8800071

Multifunctional ride-on machine for contractors for the advanced maintenance of artificial turf.

For contractors.

The SportChamp, the leading machine in the world market, is the solution for the maintenance of different synthetic sport surfaces within a sports facility. By the use of different attachments all synthetic sport surfaces can be cleaned and maintained according to the manufacturer's instructions and beyond that for an efficient and economic upkeep of the surface.

During weekly use the SportChamp levels the infill material of filled surfaces with the rotary brush and eliminates contamination at the same time. Thus the infill material will be loosened and the fibre will be put upright again.

Fibres lying loosely on the turf and even well-rehearsed fine dirt will be vacuumed in a large-volume filter box during the surface maintenance by the proven extraction system. The filter unit is controlled automatically and cleaned within minutes. It will be evacuated - controlled hydraulically - quite conveniently while sitting on the driver seat.

Numerous attachments facilitate and expedite the necessary maintenance tasks. The range includes attachments for the winter services and the refilling of infill material, for the removal of leaves, the loosening of extreme compaction and the spraying of care products. The application area of the SportChamp is enlarged by additional attachments for non-infilled artificial turf, synthetic sports surfaces or sidewalks. Thereby it is the multifunctional care and maintenance machine for your sports facility.

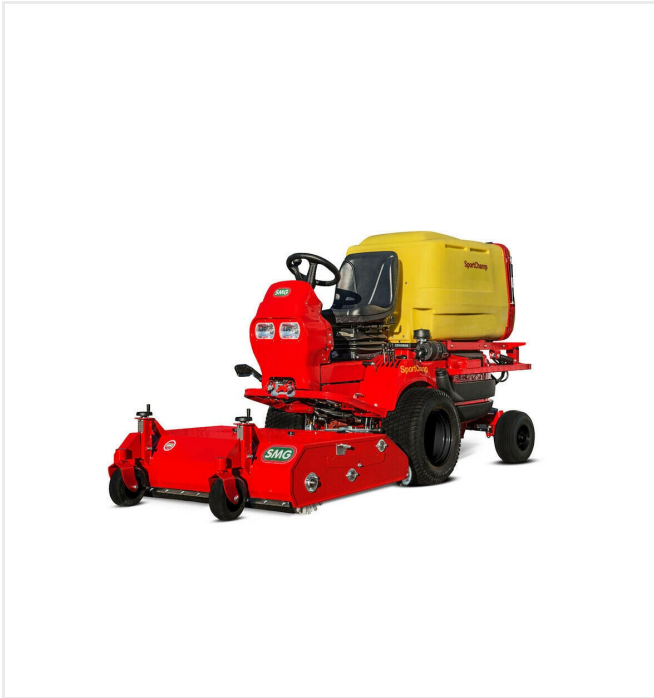
Beside the classic, weekly maintenance tasks the SMG SportChamp can additionally carry out the annual basic and deep cleaning.

SMG dust filters installed by SMG comply with DIN EN60335-2-69/dust class "M" and EN779 "F8" or "F9". Dust with a high proportion of fines as well as granulate/fibre abrasion (microplastics) are extracted via the powerful turbine and bound in the filter.

SportChamp - Maintenance

SportChamp SC2D

Detail views

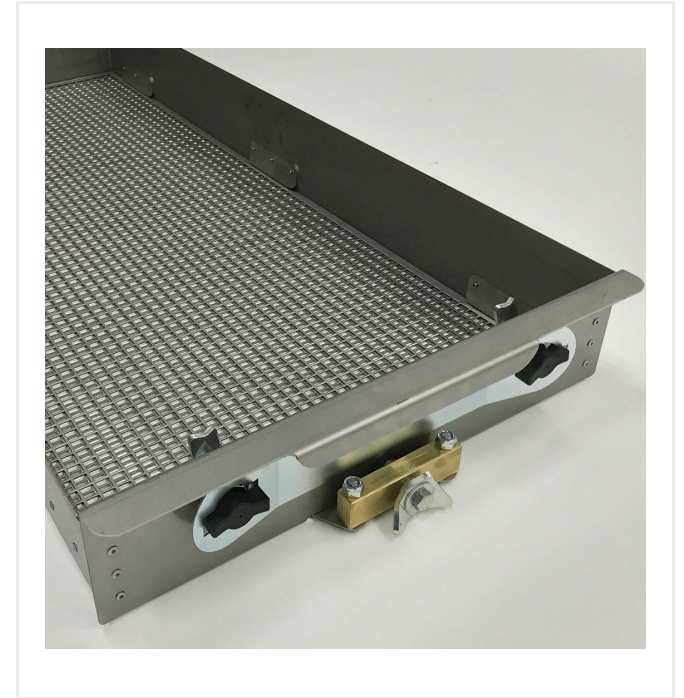


SportChamp SC2D



Clearly

Display with operating hours for maintenance intervals including errorcode notification for monitoring all functions.



Convenient

Vibrator sieve adjustable from 4 - 10 mm, cleans dirt out of the infill material with simultaneous repatriation.

SportChamp - Maintenance

SportChamp SC2D

Detail views



Gently

Tires especially for use on turf ensure low pressure on the ground.

SportChamp - Maintenance

SportChamp SC2D

Options/Attachments



Rotating brush SC3

item no. 6239163

The all-rounder for maintaining and cleaning of Track & Turf.

A adjustable sieve, I wider suction channel and optional side brooms for left and right allow the



Levelling brush device

item no. 6220935



Levelling brush-/ decompacting device

item no. 6220935 + 6223425

or with additional brush available
item no. 6220935 + 6221475

cleaning of all kind of synthetic turf systems.

The unique design allow the working on sand/rubber filled systems, systems with organic infill, non-filled or wet systems as well as on running and jogging tracks, walkways and parking areas.

SportChamp - Maintenance

SportChamp SC2D

Options/Attachments



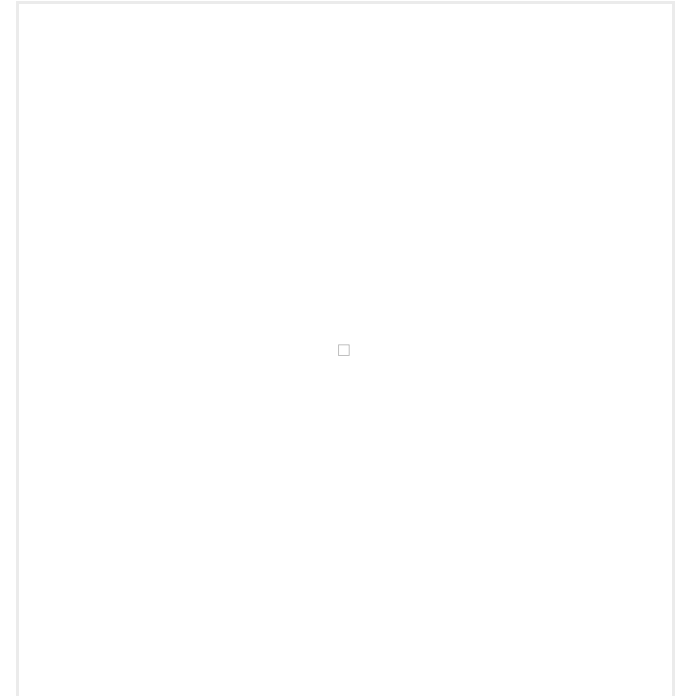
Decompacting brush

item no. 6400132



Opposed brush

item no. 6400177



Sweeping brush

item no. 6400027

SportChamp - Maintenance

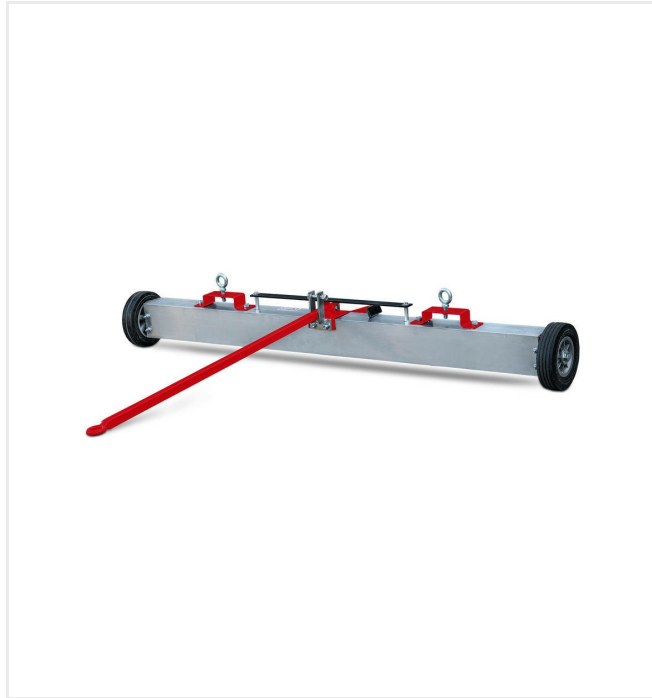
SportChamp SC2D

Options/Attachments



Foliage vacuum device

item no. 6400112



Magnet bar ML1500

item no. 6220297

Magnet bar ML1500 for artificial turf maintenance.



Oscillation brush OS1100

item no. 6224217

Oscillation brush OS1100 to brush sand/rubber/organic infilling material into artificial grass.

The working width is 1,100 mm.

SportChamp - Maintenance

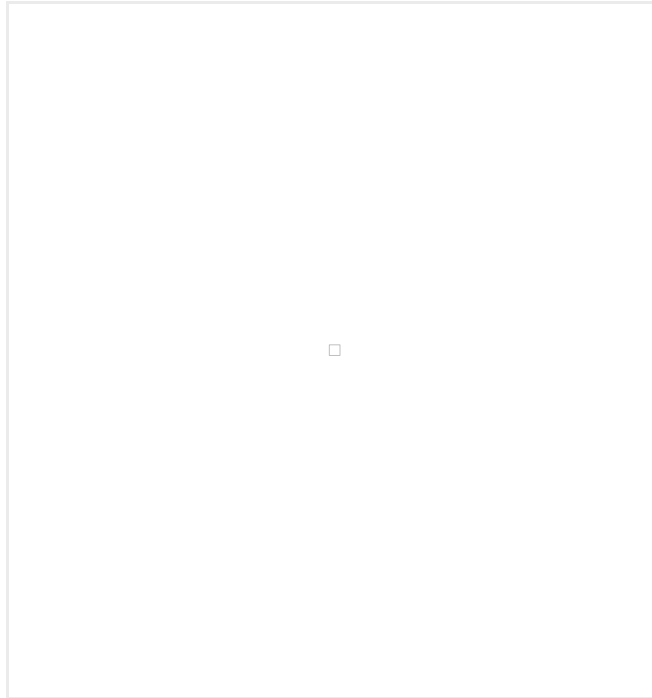
SportChamp SC2D

Options/Attachments



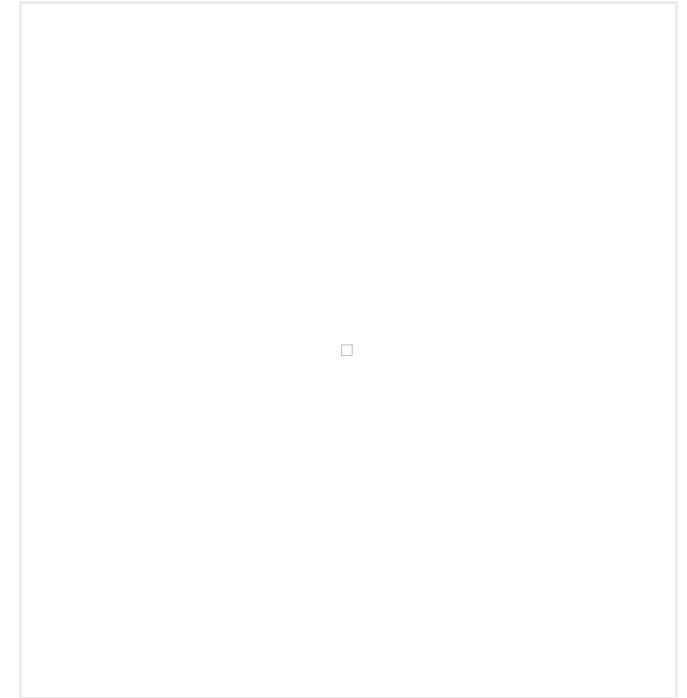
Vacuum hose device

item no. 6400125



Rigid brush - Front-mount attachment

item no. 6400093



Snow blower device

item no. 6400012

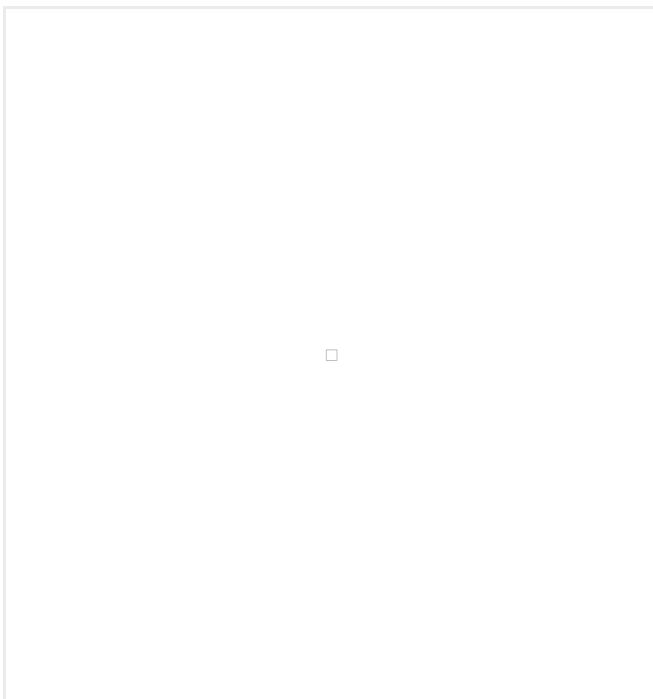
SportChamp - Maintenance

SportChamp SC2D

Options/Attachments



Snow plough
item no. 6400039



Spray device
item no. 6400025



Spreading device 800 mm
item no. 6400133

SportChamp - Maintenance

SportChamp SC2D

Options/Attachments



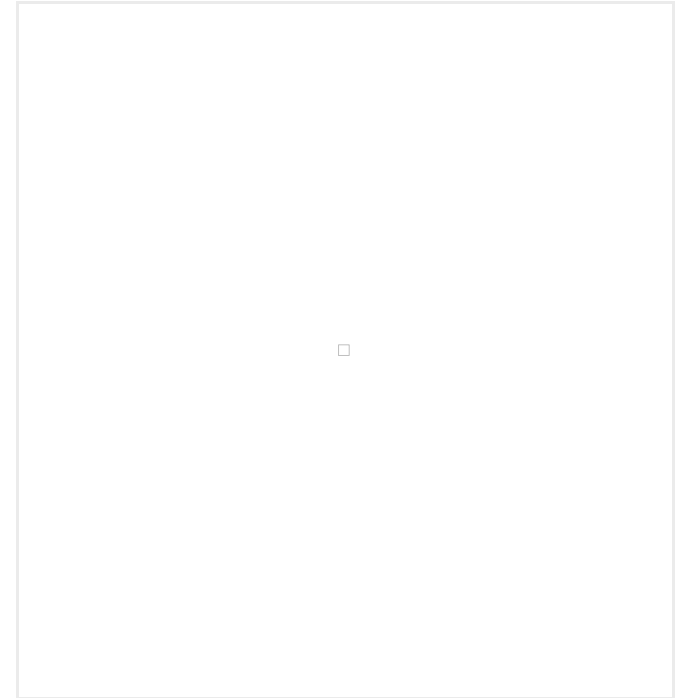
Spreading device 1,400 mm

item no. 6400167



Rotating brush 1,000 mm

item no. 6400029



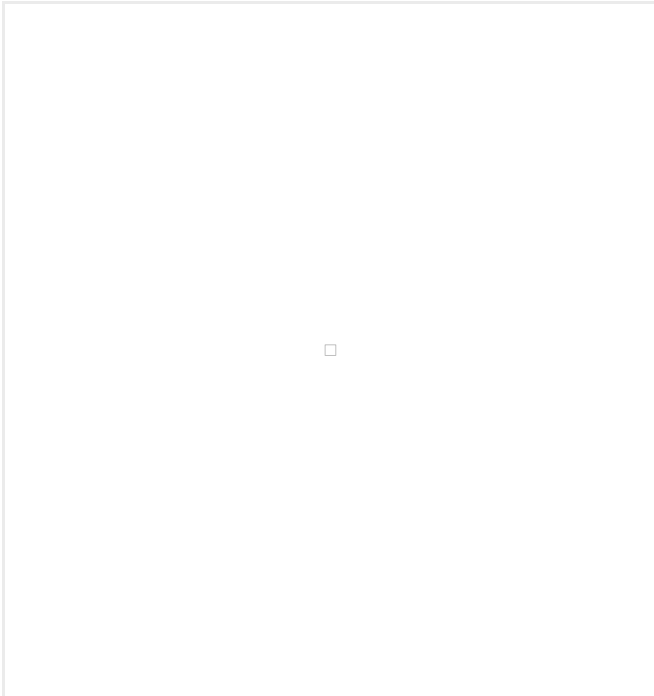
Rotating brush 1,500 mm

item no. 6400017

SportChamp - Maintenance

SportChamp SC2D

Options/Attachments



Rotating brush device with auger 1,100 mm
item no. 6211213



RotoTine RT900
item no. 6223272

Attachment for loosening the artificial turf.
Working width: 900 mm



TurfCare TCA1400
item no. 6400160

Ground driven, tow-behind device for the cleaning and care of artificial turf.

SportChamp - Maintenance

SportChamp SC2D

Options/Attachments



TurfCare TCA2000

item no. 6400193

Ground driven, tow-behind device for the cleaning and care of artificial turf.



TurfTuner TT2000

item no. 6239689

Tow-behind device for loosening and brushing of artificial turf.

SportChamp - Maintenance

SportChamp SC2D

Technical information

Drive	3-cylinder diesel engine, water-cooled / 16,1 kW (21,9 HP)
Traction drive	hydrostatic, driving speed up to 10 km/h hydraulic lifting device for accessory attachments and filter box, differential lock
Capacity of tank	approx. 16 litres
Brush working width	depending on brush: 900 - 1,600 mm
Weight	630 kg
Dimensions	L 2,300 x W 1,140 x H 1,540 mm

Subject to technical changes



passion for sports grounds

SMG Sportplatzmaschinenbau GmbH | Robert-Bosch-Str. 3, DE - 89269 Vöhringen / Germany | Phone: +49 (0) 7306 96 65 0
Fax: +49 (0) 7306 96 65 50 | info@smg-machines.com | www.smg-machines.com